

CITY OF
WORCESTER
DEPARTMENT OF
TRANSPORTATION
AND MOBILITY

PAVING PLAN
FOR
GROVE ST



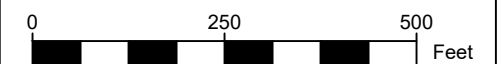
NOTES

THIS IS A CONCEPT PLAN ONLY
AND DID NOT INCLUDE FIELD
SURVEY, UTILITY INFORMATION,
OR RIGHT-OF-WAY RESEARCH.
THE PROPOSED FEATURES ARE
DEPICTED AS APPROXIMATE ONLY

DRAWN BY
PSC

DATE
5/6/2024

SHEET
COVER



SCALE: 1" = 250'

REVISIONS

NO.	BY	DATE	DESCRIPTION

CITY OF
WORCESTER
DEPARTMENT OF
TRANSPORTATION
AND MOBILITY

PAVING PLAN
FOR
GROVE ST



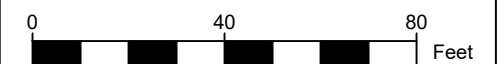
NOTES

THIS IS A CONCEPT PLAN ONLY AND DID NOT INCLUDE FIELD SURVEY, UTILITY INFORMATION, OR RIGHT-OF-WAY RESEARCH. THE PROPOSED FEATURES ARE DEPICTED AS APPROXIMATE ONLY

DRAWN BY
PSC

DATE
5/6/2024

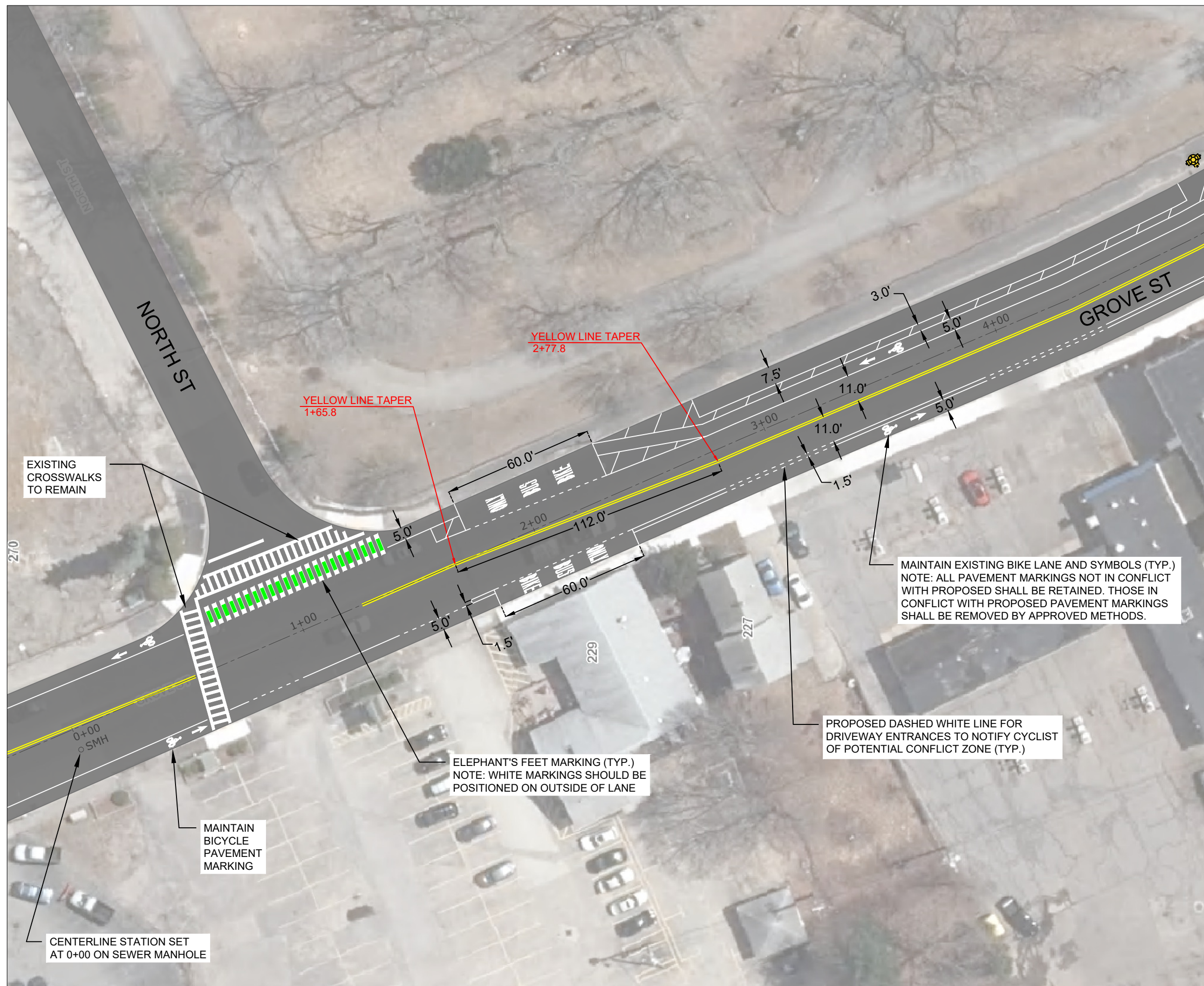
SHEET
SK-1



SCALE: 1" = 40'

REVISIONS

NO.	BY	DATE	DESCRIPTION



YELLOW LINE TAPER
2+77.8

YELLOW LINE TAPER
1+65.8

EXISTING
CROSSWALKS
TO REMAIN

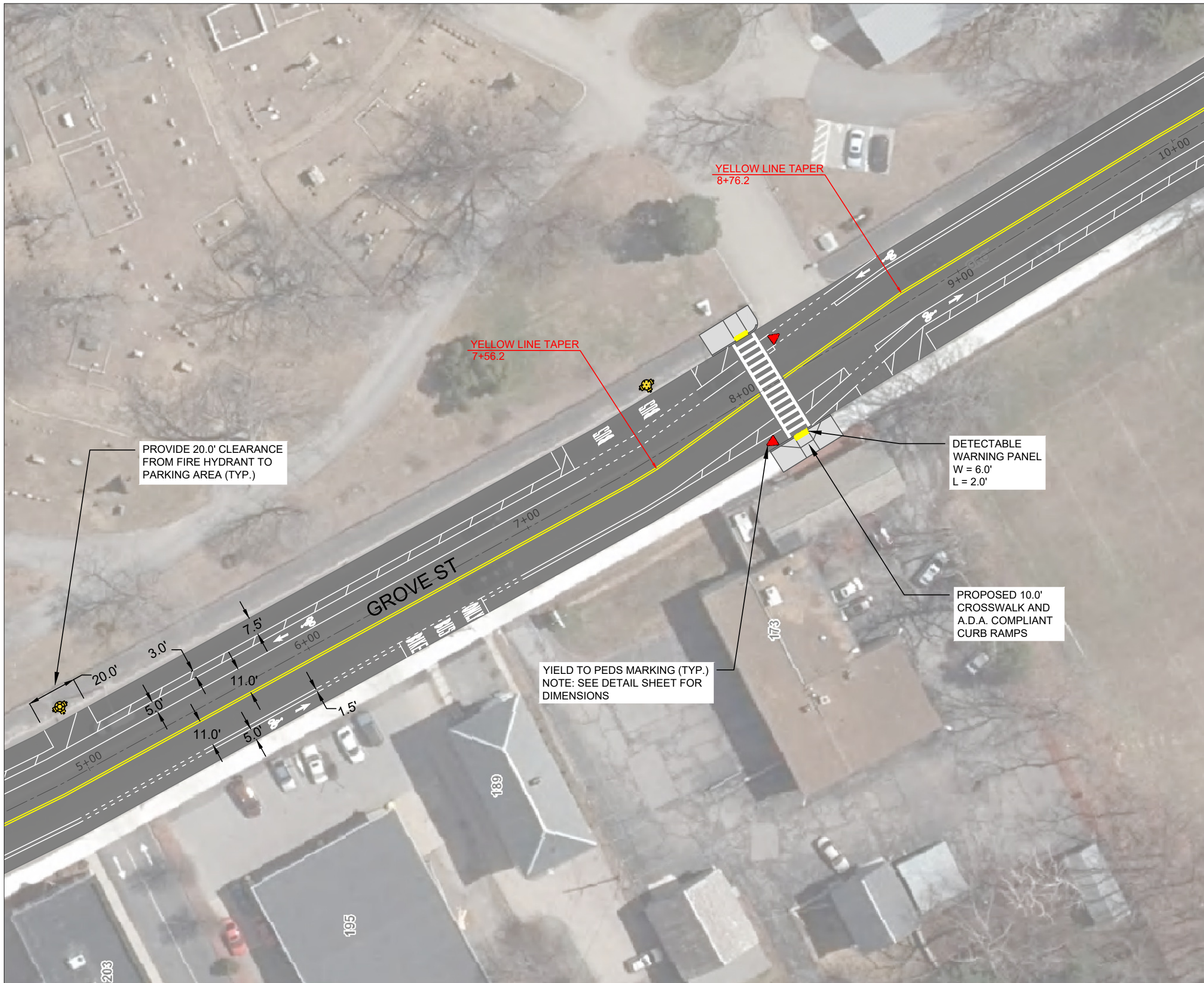
MAINTAIN EXISTING BIKE LANE AND SYMBOLS (TYP.)
NOTE: ALL PAVEMENT MARKINGS NOT IN CONFLICT
WITH PROPOSED SHALL BE RETAINED. THOSE IN
CONFLICT WITH PROPOSED PAVEMENT MARKINGS
SHALL BE REMOVED BY APPROVED METHODS.

PROPOSED DASHED WHITE LINE FOR
DRIVEWAY ENTRANCES TO NOTIFY CYCLIST
OF POTENTIAL CONFLICT ZONE (TYP.)

ELEPHANT'S FEET MARKING (TYP.)
NOTE: WHITE MARKINGS SHOULD BE
POSITIONED ON OUTSIDE OF LANE

MAINTAIN
BICYCLE
PAVEMENT
MARKING

CENTERLINE STATION SET
AT 0+00 ON SEWER MANHOLE



CITY OF
WORCESTER
DEPARTMENT OF
TRANSPORTATION
AND MOBILITY

PAVING PLAN
FOR
GROVE ST



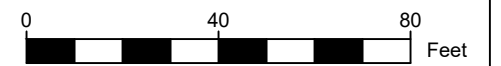
NOTES

THIS IS A CONCEPT PLAN ONLY AND DID NOT INCLUDE FIELD SURVEY, UTILITY INFORMATION, OR RIGHT-OF-WAY RESEARCH. THE PROPOSED FEATURES ARE DEPICTED AS APPROXIMATE ONLY

DRAWN BY
PSC

DATE
5/6/2024

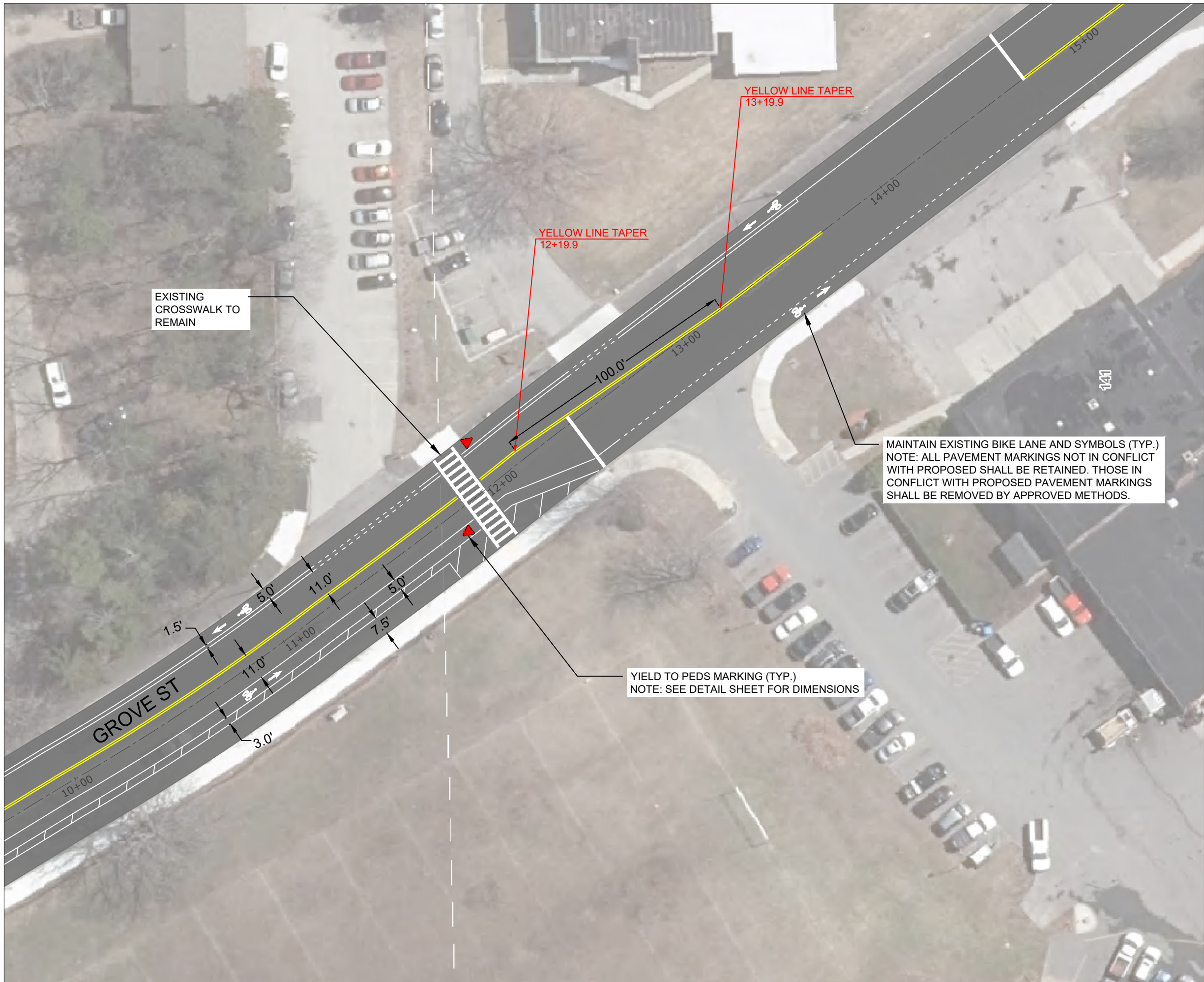
SHEET
SK-2



SCALE: 1" = 40'

REVISIONS

NO.	BY	DATE	DESCRIPTION



CITY OF
WORCESTER
DEPARTMENT OF
TRANSPORTATION
AND MOBILITY

PAVING PLAN
FOR
GROVE ST



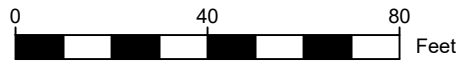
NOTES

THIS IS A CONCEPT PLAN ONLY AND DID NOT INCLUDE FIELD SURVEY, UTILITY INFORMATION, OR RIGHT-OF-WAY RESEARCH. THE PROPOSED FEATURES ARE DEPICTED AS APPROXIMATE ONLY

DRAWN BY
PSC

DATE
5/6/2024

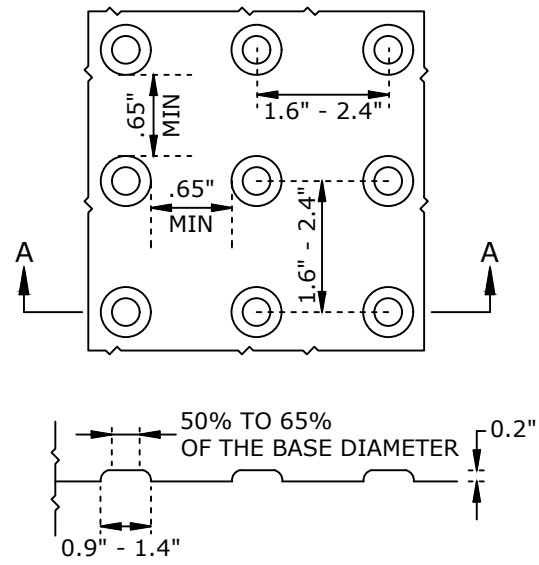
SHEET
SK-3



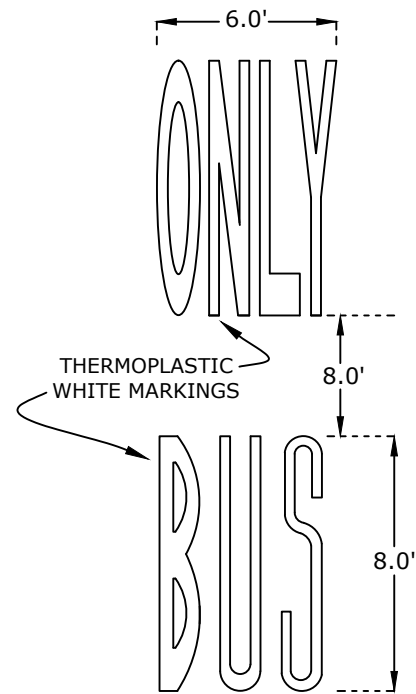
SCALE: 1" = 40'

REVISIONS

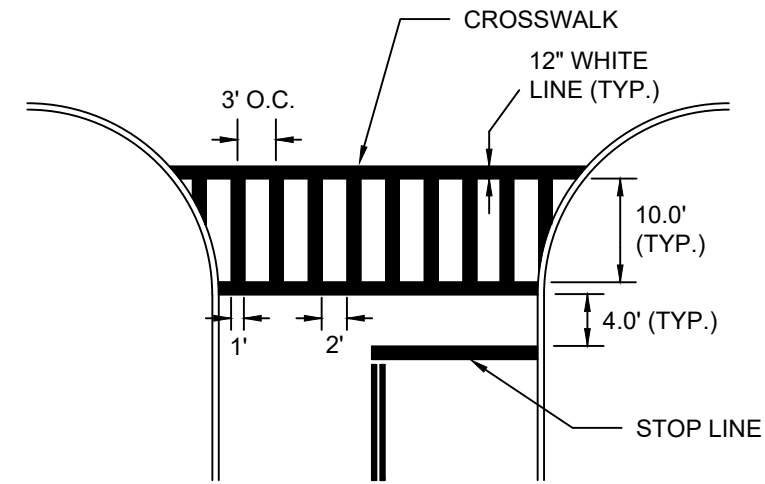
NO.	BY	DATE	DESCRIPTION



DETECTABLE WARNING PANEL
(NOT TO SCALE)

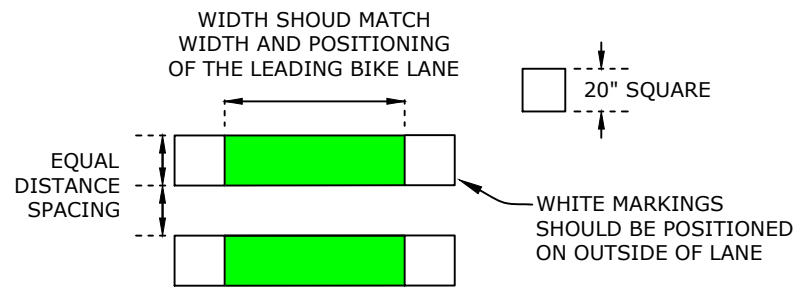


ELONGATED LETTERS
(NOT TO SCALE)

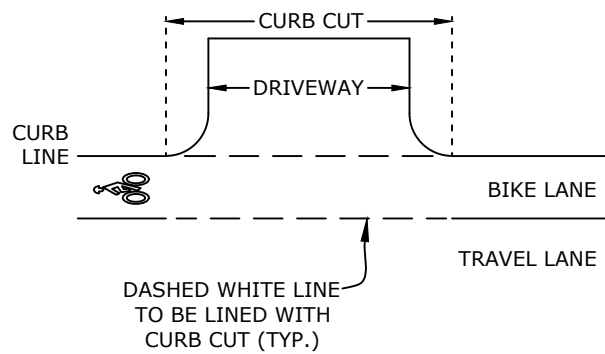


NOTE 1: ALL 12" LINES SHALL BE APPLIED IN ONE APPLICATION, NO COMBINATION OF LINES (TWO - 6" LINES) WILL BE ACCEPTED.
NOTE 2: LAYOUT OF CROSSWALKS SHALL BE APPROVED BY THE ENGINEER PRIOR TO APPLICATION.
NOTE 3: CROSSWALKS BARS SHALL BE PLACED OUTSIDE THE VEHICULAR PATH WHEREVER POSSIBLE.

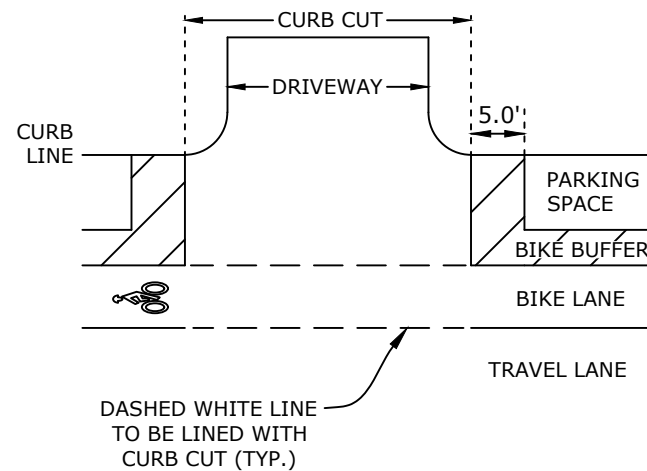
CROSSWALK PAVEMENT MARKING
(NOT TO SCALE)



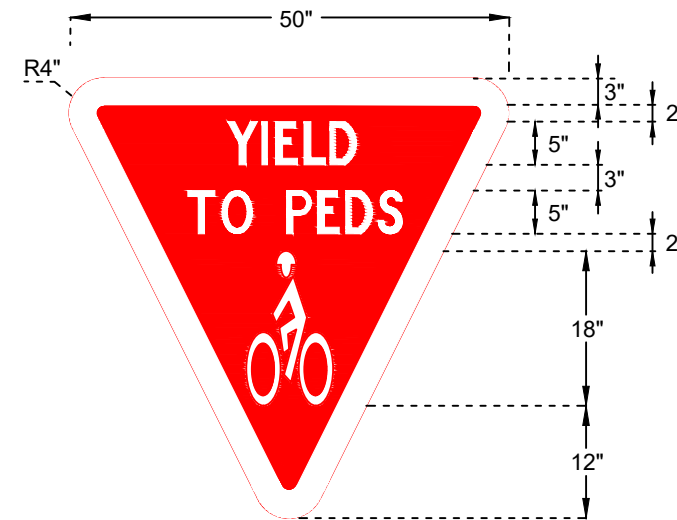
ELEPHANT'S FEET MARKING
(NOT TO SCALE)



MARKING AT DRIVEWAYS WITHOUT BIKE BUFFER
(NOT TO SCALE)



MARKING AT DRIVEWAYS WITH PARKING SPACE
(NOT TO SCALE)



YIELD TO PEDS MARKING
(NOT TO SCALE)

CITY OF WORCESTER
DEPARTMENT OF TRANSPORTATION AND MOBILITY

PAVING PLAN FOR GROVE ST



NOTES

THIS IS A CONCEPT PLAN ONLY AND DID NOT INCLUDE FIELD SURVEY, UTILITY INFORMATION, OR RIGHT-OF-WAY RESEARCH. THE PROPOSED FEATURES ARE DEPICTED AS APPROXIMATE ONLY

DRAWN BY
PSC

DATE
5/6/2024

SHEET
DETAILS



SCALE: N/A

REVISIONS

NO.	BY	DATE	DESCRIPTION