



URBAN FORESTRY TREE COMMISSION MEETING

Wednesday October 9, 2024 – 6:00 P.M.

Parks, Recreation & Cemetery Administrative Office

Meeting Room A

50 Officer Manny Familia Way Worcester, MA 01605

Or

If you choose to use the Microsoft Teams platform:

- 1) Go to www.teams.com
- 2) Enter Meeting ID# 268 404 262 422
- 3) Enter password: 7SHpSQ

If you choose to attend via phone:

- 1) Call 1-469-998-7682
- 2) Enter Meeting ID#: 942 571 325#

If technological problems interrupt the virtual meeting component, the meeting will continue in-person.

AGENDA

1. Call to Order
2. Attendance (Roll Call)
3. Acceptance of Minutes for the (Roll Call) – September 11, 2024
4. To request a reasonable accommodation or interpretation or submit written comments or questions in advance of the meeting, please contact the Parks, Recreation & Cemetery Division by email at Worcestertrees@worcesterma.gov. Please note that interpretation requests must be received no later than 48 hours in advance of the meeting. Para solicitar una interpretacion razonable, o enviar comentarios o preguntas por escrito por favor comuniquese con la oficina de la Division de Parques, Recreo & Cementerio por correo electronico a Worcestertrees@worcesterma.gov. Por favor note que las solicitudes de interpretacion deberan ser enviadas 48 horas antes de la reunion.
5. Public Participation – Pursuant to Chapter 20 of the Acts of 2021 and in order to ensure active, public engagement, the City of Worcester currently allows for both in person and remote participation at the Urban Forestry Tree Commission meetings. To partake in the “Public Participation” section of this meeting, you may join us directly within the 50 Officer Manny Familia Way Meeting Room A, follow the information above to join via the Teams application or dial the direct line as indicated. If you would like to raise your hand when in the meeting as a call-in user, you may dial *5.

6. Assistant Commissioners Report (See Report Topics Below)

7. Old Business

- Request of Commissioner Winbourne for the Commission to set goals for the Commission
- Request of Commissioner Winbourne to discuss the proposed Worcester Urban Forestry Research Summit
- Green Worcester Summit
- Review City Ordinances on Trees – Fall 2024
[Trees in the City - Right Tree, Right Place | City of Worcester, MA \(worcesterma.gov\)](https://www.worcesterma.gov/2024/08/28/trees-in-the-city-right-tree-right-place/)

8. New Business

Agenda items must be submitted (3) three business days before each Commission Meeting with subject line "Agenda Item" to worcestertrees@worcesterma.gov.

- Request of WPI Green Team to discuss Tree Planting Proposal for Urban Forestry Tree Commission
- Discuss the Worcester Academy Parking Lot
- Update on filling vacancies on the Urban Forestry Tree Commission

9. Tabled Items

Tabled agenda items cannot be discussed at a meeting until it has been moved to old business. The item must be requested and approved during the previous meeting to be included on the next agenda.

- Request of Commissioner Winbourne to discuss Green School Yard Program
- Green Worcester Cool Pocket
- Miyawaki Forest
- NA

10. Date of Next Meeting:

- November 6, 2024
- December 4, 2024
- January 15, 2025 (Tentative)
- February 5, 2025(Tentative)
- March 12, 2025(Tentative)
- April 2, 2025(Tentative)
- May 7, 2025(Tentative)
- June 4, 2025(Tentative)

11. Meeting Adjourned (Roll Call)



URBAN FORESTRY TREE COMMISSION MINUTES

Wednesday September 11, 2024 – 6:00 P.M.

Parks, Recreation & Cemetery Administrative Office

Meeting Room A

50 Officer Manny Familia Way Worcester, MA 01605

Or

If you choose to use the Microsoft Teams platform:

- 1) Go to www.teams.com
- 2) Enter Meeting ID# 218 760 908 355
- 3) Enter password: ScGN7z

If you choose to attend via phone:

- 1) Call 1-469-998-7682
- 2) Enter Meeting ID#: 711 506 863#

If technological problems interrupt the virtual meeting component, the meeting will continue in-person.

AGENDA

1. Call to Order – 6:03 pm
2. Attendance (Roll Call) – Commissioners Present were:
 - Robin Karoway-Waterhouse
 - Joy Winbourne - Virtual
 - Kristin Wobbe
 - Administration Present were:
 1. Robert C. Antonelli, Jr., Assistant Commissioner
 2. Brian Breveleri – Supervisor of Forestry
 3. Dennis Tucker, Working Foreman - Virtual
 4. Milagros Pacheco, Staff Assistant III
3. Acceptance of Minutes for the (Roll Call) – June 5, 2024.
 - Commissioner Wobbe made a motion to approve the minutes for June 5, 2024. Second by Commissioner Karoway-Waterhouse. All were in favor. Motion was approved 3 – 0.

4. To request a reasonable accommodation or interpretation or submit written comments or questions in advance of the meeting, please contact the Parks, Recreation & Cemetery Division by email at Worcestertrees@worcesterma.gov. Please note that interpretation requests must be received no later than 48 hours in advance of the meeting. Para solicitar una interpretacion razonable, o enviar comentarios o preguntas por escrito por favor comuniquese con la oficina de la Division de Parques, Recreo & Cementerio por correo electronico a Worcestertrees@worcesterma.gov. Por favor note que las solicitudes de interpretacion deberan ser enviadas 48 horas antes de la reunion.
5. Public Participation – Pursuant to Chapter 20 of the Acts of 2021 and in order to ensure active, public engagement, the City of Worcester currently allows for both in person and remote participation at the Urban Forestry Tree Commission meetings. To partake in the “Public Participation” section of this meeting, you may join us directly within the 50 Officer Manny Familia Way Meeting Room A, follow the information above to join via the Teams application or dial the direct line as indicated. If you would like to raise your hand when in the meeting as a call-in user, you may dial *5.
6. Assistant Commissioners Report (See Report Topics Below)
7. Old Business
 - Request of Commissioner Winbourne for the Commission to set goals for the Commission.
 - After discussion by the Commission.
 - Commissioner Wobbe made a motion to keep in old business. Second by Commissioner Winbourne. All were in favor. Motion was approved 3 – 0.
 - Request of Commissioner Winbourne to discuss the proposed Worcester Urban Forestry Research Summit
 - After discussion by the Commission.
 - Commissioner Winbourne made a motion to keep in old business. Second by Commissioner Wobbe. All were in favor. Motion was approved 3 – 0.
 - Green Worcester Cool Pocket
 - After discussion by the Commission.
 - Commissioner Winbourne made a motion to table. Second by Commissioner Karoway Waterhouse. All were in favor. Motion was approved 3 – 0.
 - Miyawaki Forest
 - After discussion by the Commission.
 - Commissioner Karoway-Waterhouse made a motion to table. Second by Commissioner Winbourne. All were in favor. Motion was approved 3 – 0.
 - Green Worcester Summit
 - After discussion by the Commission.
 - Commissioner Winbourne made a motion to file. Second by Commissioner Wobbe. All were in favor. Motion was approved 3 – 0.
8. New Business

Agenda items must be submitted (3) three business days before each Commission Meeting with subject line “Agenda Item” to worcestertrees@worcesterma.gov.

- Update on Urban Forest Master Plan – The Commission had a discussion as this item has been discussed and suggested changes are being made.
- Commissioner Karoway-Waterhouse made a motion to file. Second by Commissioner Wobbe. All were in favor. Motion was approved 3 – 0.

9. Tabled Items

Tabled agenda items cannot be discussed at a meeting until it has been moved to old business. The item must be requested and approved during the previous meeting to be included on the next agenda.

- Request of Commissioner Winbourne to discuss Green School Yard Program
- Review City Ordinances on Trees – Fall 2024
 - Commissioner Karoway Waterhouse made a motion to move this item to Old Business to discuss at the next meeting. Second by Commissioner Wobbe. All were in favor. Motion was approved 3 – 0.

[Trees in the City - Right Tree, Right Place | City of Worcester, MA \(worcesterma.gov\)](https://www.worcesterma.gov/2024/09/24/trees-in-the-city-right-tree-right-place/)

- NA

10. Date of Next Meeting:

- October 9, 2024
- November 6, 2024
- December 4, 2024
- January 15, 2025 (Tentative)
- February 5, 2025(Tentative)
- March 12, 2025(Tentative)
- April 2, 2025(Tentative)
- May 7, 2025(Tentative)
- June 4, 2025(Tentative)

11. Meeting Adjourned (Roll Call)

ASSISTANT COMMISSIONER’S REPORT:

1. General:

- Urban Forest Master Plan Review
 - Update – Second Draft available at [Trees in the City - Right Tree, Right Place | City of Worcester, MA \(worcesterma.gov\)](https://www.worcesterma.gov/2024/09/24/trees-in-the-city-right-tree-right-place/)
 - Assistant Commissioner Antonelli explained that the draft should be finalized by the end of the week, he said all suggested changes were submitted and will be addressed. He has been working with Davey, and he said changes were relatively easy to do in Word but when transferring to the design it became a little challenging, apparently removing some of the graphs set the document off, also the quote in question was removed. He added that once he confirms that all items discussed were addressed, he will have them develop something to bring to the council for their review and their approval. Once that goes out, he would make sure to update it on the city’s website and send it back to the people in attendance and the Commission. He stated that he believed all concerns were addressed.

- Commissioner Karoway-Waterhouse asked if anyone had any concerns. There were no questions.
- Door Hanger - NA
- Tree Commission attending neighborhood meetings –
 - Assistant Commissioner asked if the Commission had decided how they would proceed on the neighborhood meeting, if they we're going to proceed with it in the fall with the list that was generated last spring.
 - Commissioner Karoway-Waterhouse said that she was under the impression that people would go on their own to the meetings.
 - Commissioner Wobbe suggested to divide them up so there's no duplication, maybe create a list of the meetings attended.
 - Commissioner Winbourne volunteered to create a google list for the Commission, so they can go through meetings and list which they're planning to go to, so that no rules are broken, as no more than 2 commissioners can attend a meeting.
 - Commissioner Karoway-Waterhouse agreed that was a good plan and she also asked to create a document with information they can give out to the neighborhood.
 - Assistant Commissioner Antonelli agreed and said that probably within a week or so he would have the planting schedules. They can provide a sheet with:
 - Planting Schedules
 - How to call a removal
 - How to ask for a trim
 - Emergencies
 - Bottom line if you need anything call 311
 - He added that they are working with Worcester Technical High School in developing a brochure/flyer information which can be used for both Parks and Forestry. He suggested for the Commission to attend a couple of meetings to see what type of questions the neighborhoods have so they can focus on answering their questions on those brochures.
 - Commissioner Wobbe suggested they start with the introduction of the Urban Forestry Tree Commission and the benefit of trees, as well as what questions they have.
 - Commissioner Karoway-Waterhouse asked if maybe they can hand out the door hanger.
 - Assistant Commissioner said he can provide the door hanger, copies of the ordinance, the website location for the ordinance, memorial tree planting, as well as other information. He said he would provide a package of a few informational items.
 - Commissioner Winbourne suggested giving out the power point file that had some background on why we care about trees, and a summary of the master plan.
 - Assistant Commissioner Antonelli asked how quickly they would like these packages.
 - Both Commissioner Karoway-Waterhouse and Commissioner Wobbe decided on the sooner the better.
 - Assistant Commissioner committed to having packages delivered to them at the earliest convenience once he received the Power Point from Commissioner Winbourne.
- Tree replacement policy – NA
- Neighborhood Based Urban Heat Risk Assessment - NA
- Worcester Now | Next online survey - NA
- Green Worcester Advisory Committee -NA
- Planting –
 - Spring 2024 Planting – Update
 - Assistant Commissioner Antonelli stated that he had a pie chart which identified all the things that forestry does, but it didn't print right, and he was running out of time, therefore he decided to leave it for the following meeting. The list would include planting, removals, stump grinding, trimming, watering, tracking of species, it included a lot of other factors part of the daily operations such as breakdown of time and working on each one of those of those items.

- Commissioner Wobbe asked for the ratio of plantings to removals for this year.
 - Forestry Supervisor, Brian Breveleri estimated over 300 plantings and 297 to 300 removals, the same as last year.
 - Assistant Commissioner discussed watering, removals and plantings and the goals for 2025.
 - Commissioner Karoway-Waterhouse asked if the species and neighborhoods were tracked.
 - Mr. Breveleri said yes, there is a database with that information.
- Customer Service Update
 - Customer Service Contact Information 508-929-1300 &/or 311
- Street Resurfacing Opportunities & Challenges – NA
- Zoning Ordinance Discussion - NA
- Worcester Ordinance Relative to the Protection of Public Trees - NA
- Partnerships –
 - New England Botanical Garden @ Tower Hill - NA
- Grant Applications –
 - DCR Grant Program - NA
- Economic Development Initiatives –
 - NA
- Forestry Vandalism & Graffiti –
 - NA
- Donations –
 - NA
- Pests –
 - ALB (Asian Longhorned Beetle) - NA
 - EAB (Emerald Ash Borer) - NA
 - Spotted Lanternfly - NA
 - Elm Zigzag Sawfly – NA
- Forestry Operations –
 - Tree City USA – Update
 - Awarded the Tree City USA designation for the 38th consecutive year.
 - Awarded the Tree City USA Growth Award designation for the 25th consecutive year.
 - Arbor Day – Update
 - April 25, 2025
 - April 26, 2025 – Festival
- Budget – Operational & Capital – NA
 - Parks, Recreation & Cemetery Division - NA
 - Capital Improvement Program – Forestry will be getting a \$350,000.00 new bucket truck.
 - City Five Point Financial Plan – NA
 - Misc. -- Commissioner Wobbe asked the budget council gets the final version of the Master Plan could that be taken into consideration for the next year.
 - Assistant Commissioner Antonelli explained the budgeting process and when he submits his requests, and he stated that submitting the Master Plan in the time it's expected it is within the time frame.
- Date of next meeting – October 9, 2024.
- Commissioner Karoway-Waterhouse made a motion to adjourn at 6:46 PM. Second by Commissioner Wobbe. All were in favor. Motion was approved 3 – 0.

A copy of this full meeting will be available to view and listen to at:
www.worcesterma.gov/city-clerk/public-meetings/agendas-minutes

What's in the Worcester's new Urban Forest Master Plan?

Dr. Joy Winbourne
Chair of Worcester's Urban Forestry Tree Commission



About me: Dr. Joy B. Winbournne (she/her/hers)
Assistant Professor at University of Massachusetts
Department of Environmental, Earth, and Atmospheric Sciences



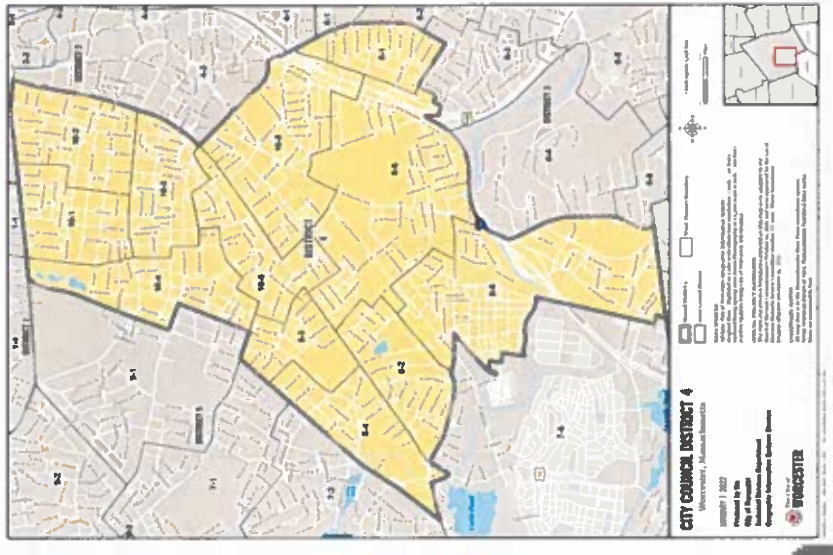
For more info on my research activities: www.joywinbournne.com



Worcester Urban Forestry Tree Commission

Do you live in district 4?
Come join the WUFT Commission!

- Created in 2022
- Who we are?
 - Kristin Wobbe – District 1
 - Joy Winbourne – District 2 (Chair)
 - Robin Karoway-Waterhouse – District 3
 - Alexander Elton - District 5
- Open vacancy for District 4



Pathway to creating Urban Forestry Master Plan

2021 Green Worcester Plan states the goal to develop urban forestry master plan

2022 Creation of the Worcester Urban Forestry Tree Commission with first meeting in October

Spring 2022 Davey Tree Company hired to conduct street tree inventory

June 2023 Davey presents first draft of master plan

October 2023 Davey presents second draft of master plan



Where to find a draft of the plan?

<https://www.worcesterma.gov/parks/trees>

URBAN FOREST MASTER PLAN

The City of Worcester is finalizing the development of the first Urban Forest Master Plan. The Plan will serve as a roadmap to proactively manage and grow the City's tree canopy and provide a shared vision for the future of the urban forest to help inspire us to care, plant and protect our trees.

Draft Master Plan

The revised (second) draft Urban Forest Master Plan was submitted in October 2023. If you have comments, please email them to WorcesterTrees@worcesterma.gov. The deadline for comments will be Wednesday, January 10, 2024. There is a meeting of the Urban Forestry Tree Commission scheduled for Wednesday, January 17, 2024 at 6 p.m. to discuss this second draft. View the Plan by clicking on the button below.

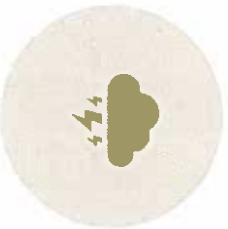
[VIEW THE DRAFT MASTER PLAN](#)

Presentations

- [Parks & Recreation Commission Presentation - May 4, 2023](#)
- [Urban Forestry Tree Commission Presentation - May 3, 2023](#)



Vision for Worcester's Urban Forest



A model of proactive management, sustainability, and climate resilience.



Through intentional planning and community engagement, we will ensure tree diversity and well-distributed tree canopy cover, care, and green spaces for the entire Worcester community.

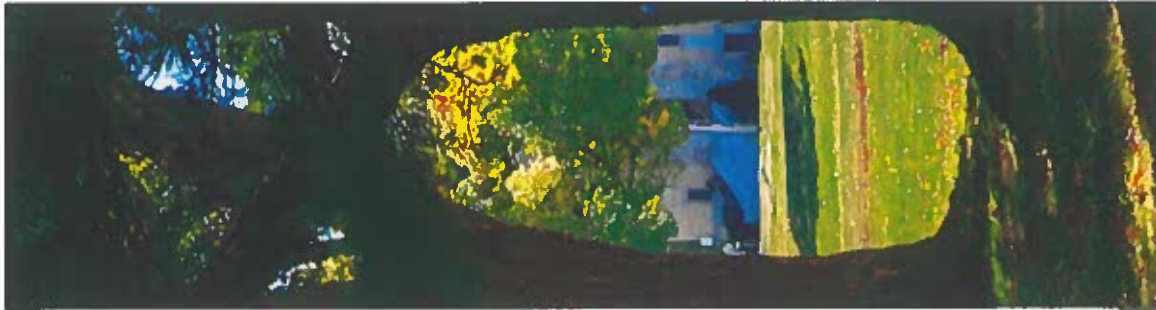


We envision a city where the urban forest is well cared for, with proactive measures in place to ensure its health and longevity.



Through nurturing a resilient and sustainable urban forest, we aim to create a greener, healthier, and more vibrant Worcester.





The City of Worcester Urban Forest Master Plan

ACKNOWLEDGEMENTS

CITY MANAGER

Eric D. Batista

CITY COUNCIL

Joseph M. Petty, Mayor

Morris A. Bergman

Candy Mero-Carlson

Donna M. Colorio

Etel Haxhijaj

Khrystian E. King

Thu Nguyen

Sara Rivera

Sean M. Rose

George J. Russell

Kathleen M. Toomey

URBAN FORESTRY TREE COMMISSION

Joy Winbourne, Chair

Alexander Elton

Robin Karoway-Waterhouse

Joseph Mogel

Kristin K. Wobbe

DEPARTMENT OF PUBLIC WORKS & PARKS

Jay J. Fink, PE., Commissioner

Robert C. Antonelli, Jr. CPRP, Assistant Commissioner

Brian Breveleri, Supervisor of Forestry - Arborist

DAVEY RESOURCE GROUP

Kerry Gray, Principal Consultant

Moriah Day, Associate Consultant

Ashley McElhinney, Associate Consultant

Thank you to the city departments, organizations, and individuals that helped in creating the Worcester Urban Forest Master Plan.

City of Worcester Department of Public Works & Parks

City of Worcester Department of Sustainability and Resilience

City of Worcester Office of Human Rights

City of Worcester Planning and Regulatory Services

Clark University

Greater Worcester Land Trust New England Botanic Garden @ Tower Hill

Mass Audubon

National Grid

Regional Environmental Council Worcester

Worcester GreenCorp (Chamber of Commerce)

Worcester Residents

The City of Worcester wants to thank the over one thousand residents who took their time to complete the survey or attend a public hearing in an effort to express their thoughts on the City of Worcester Urban Forest



What is in the plan?

- **Section 1.** Overview and Benefits of urban trees
- **Section 2.** State of the Current Urban Forest
- **Section 3.** Management plan
- **Section 4.** Engagement & Outreach
- **Section 5.** Recommendations & Action Steps

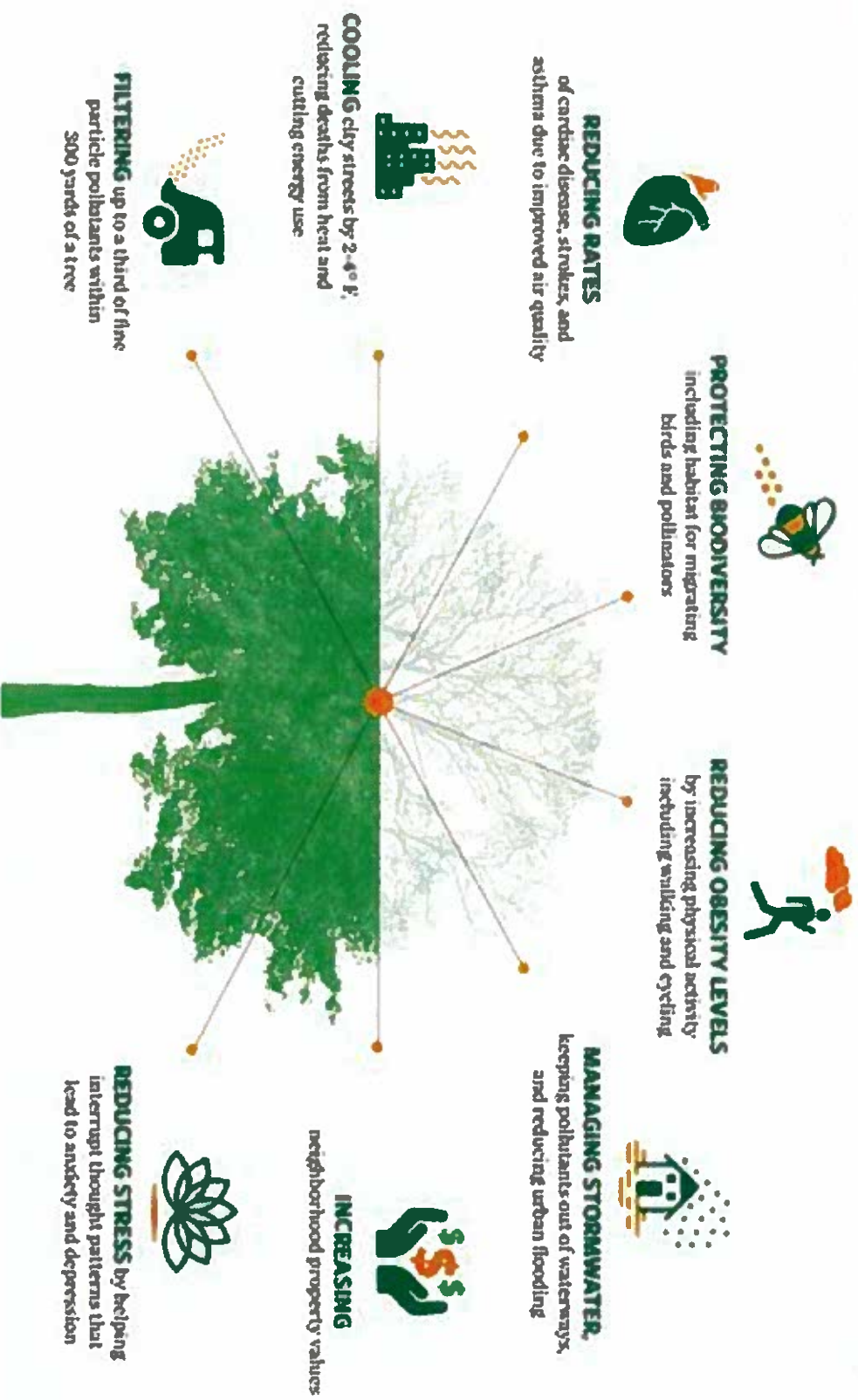


What is an urban forest?



Benefits of Urban Trees

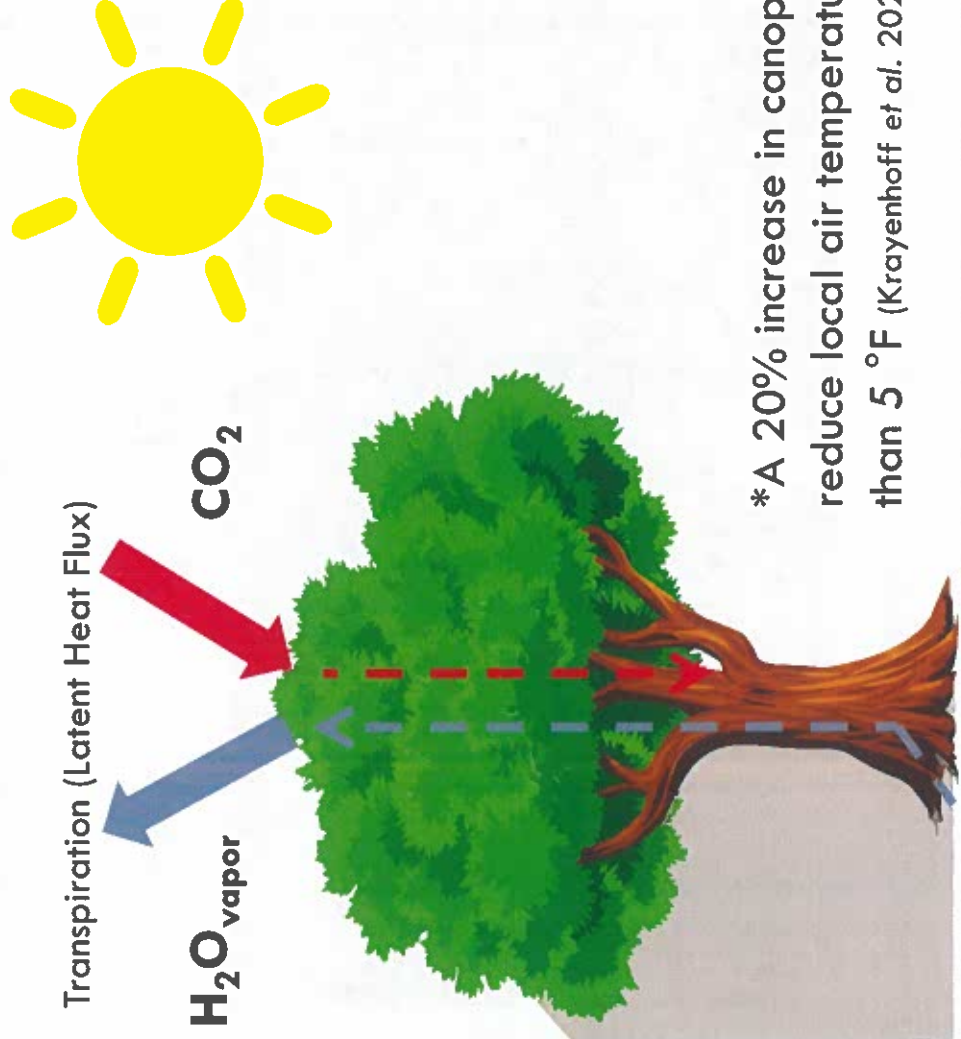
Research has linked the presence of urban trees to...



Cooling effect of vegetation in cities

Trees can help reduce temperatures (surface and air) by absorbing sun's rays rather than surfaces below, and from cooling effect of transpiration.

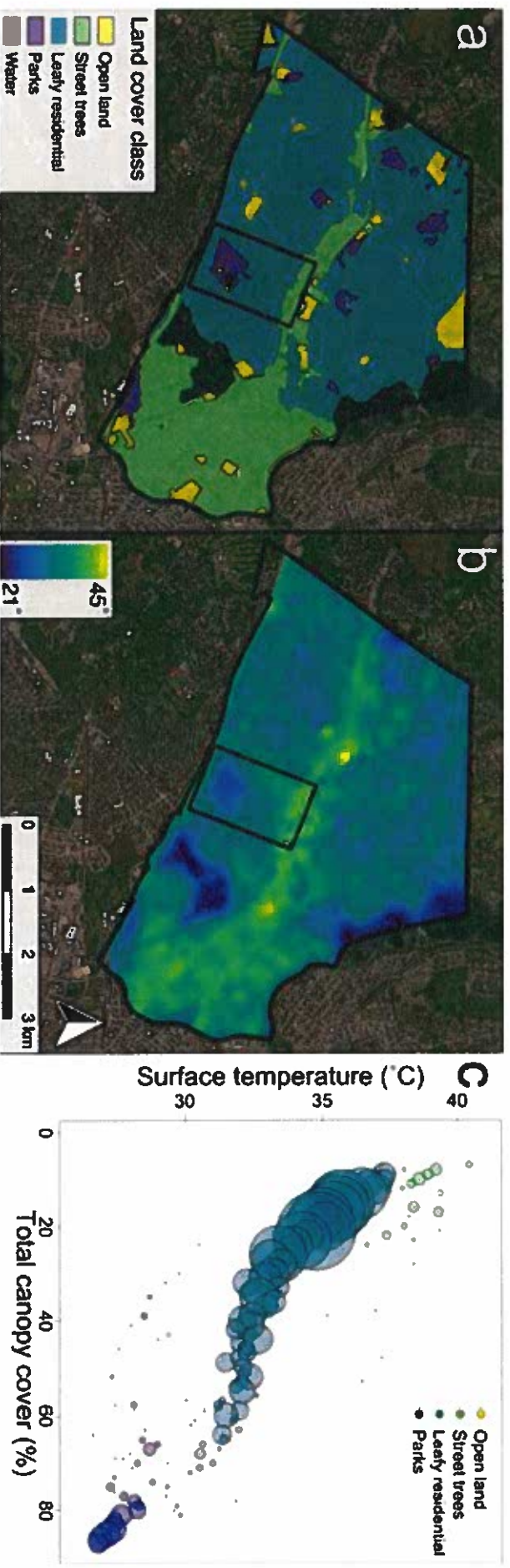
Trees transpire water when they conduct photosynthesis, transporting water from the ground to the atmosphere where it evaporates and provides a cooling effect.



*A 20% increase in canopy cover can reduce local air temperatures by more than 5 °F (Krayenhoff et al. 2021)



Strong relationships between the amount of canopy cover and local surface temperatures – example from Arlington, MA



Read more about how urban trees reduce temperatures: Winbourne et al. 2020 *BioScience*



TREES IN THE CITY - RIGHT TREE, RIGHT PLACE

Tall trees, such as:
maple, oak, spruce,
and pine

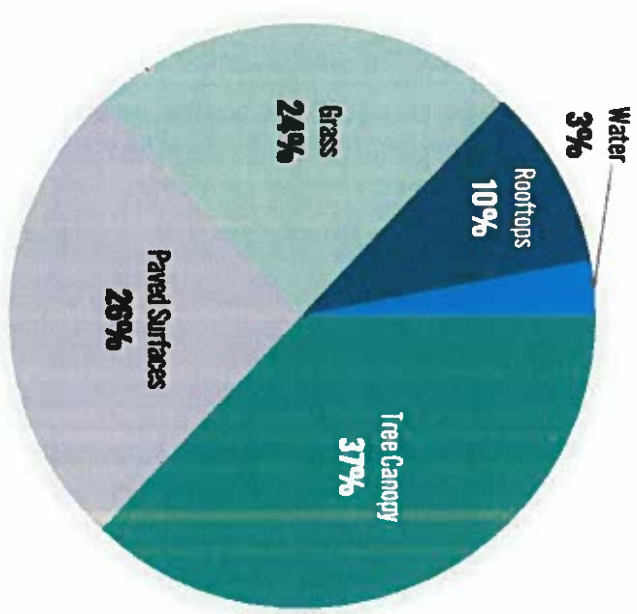
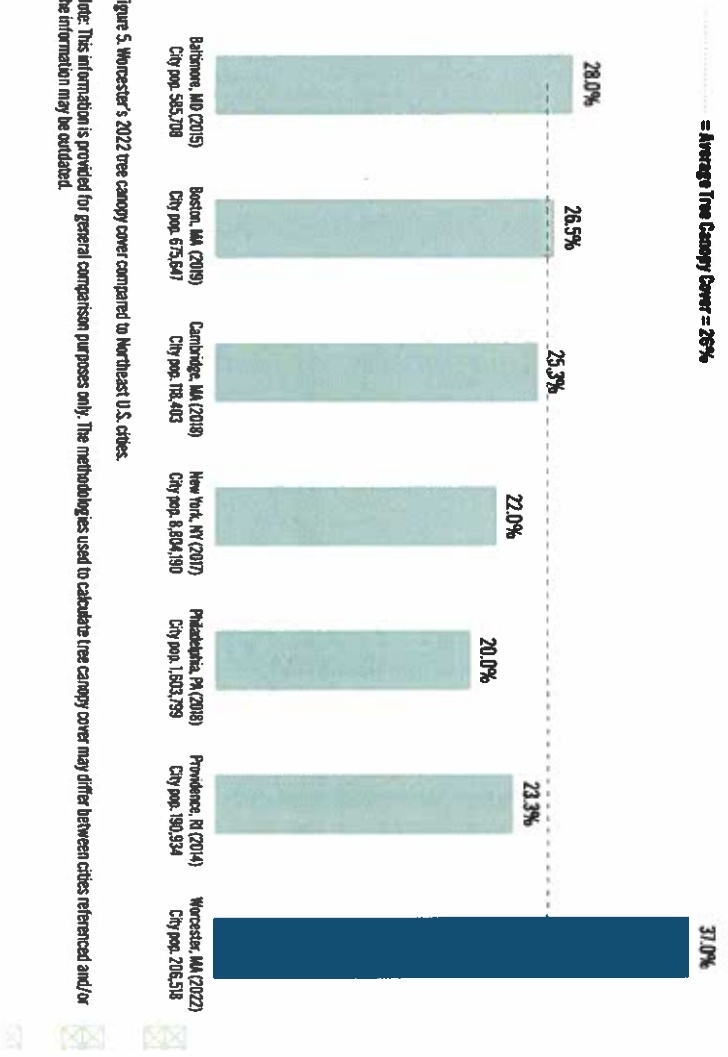
Plant the right tree in the right place
Plant taller trees away from overhead utility lines



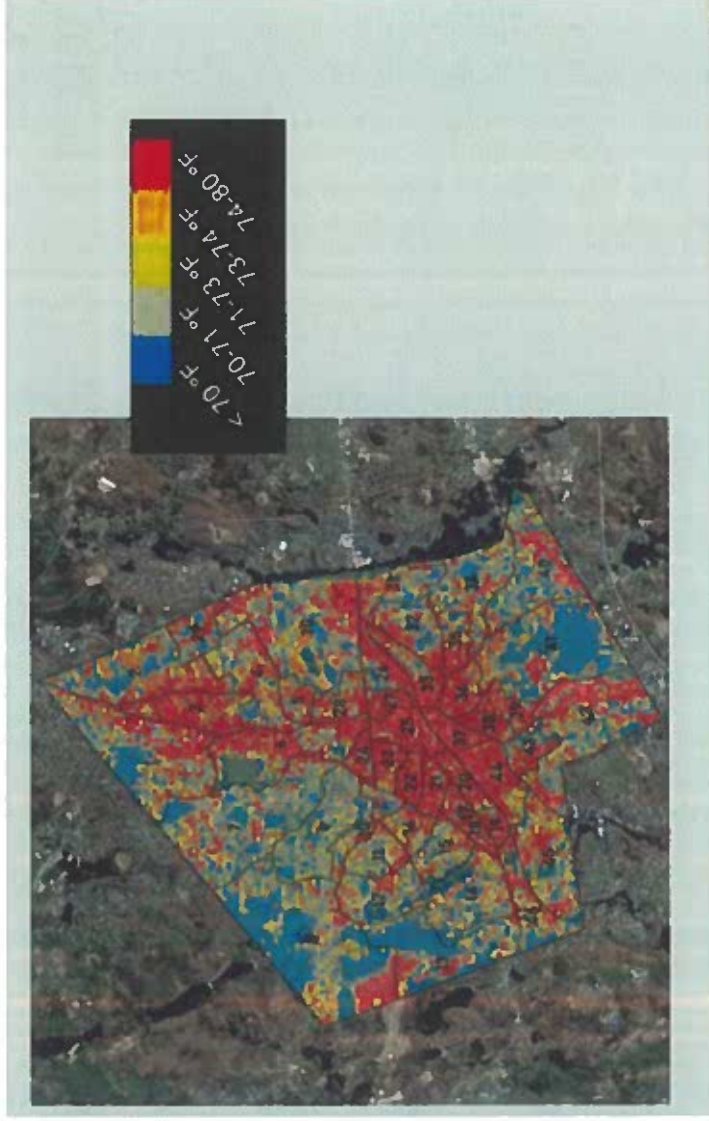
<https://www.worcesterma.gov/parks/trees>



Current state of the urban forest



Increasing tree canopy identified as key recommendation by Worcester extreme heat study

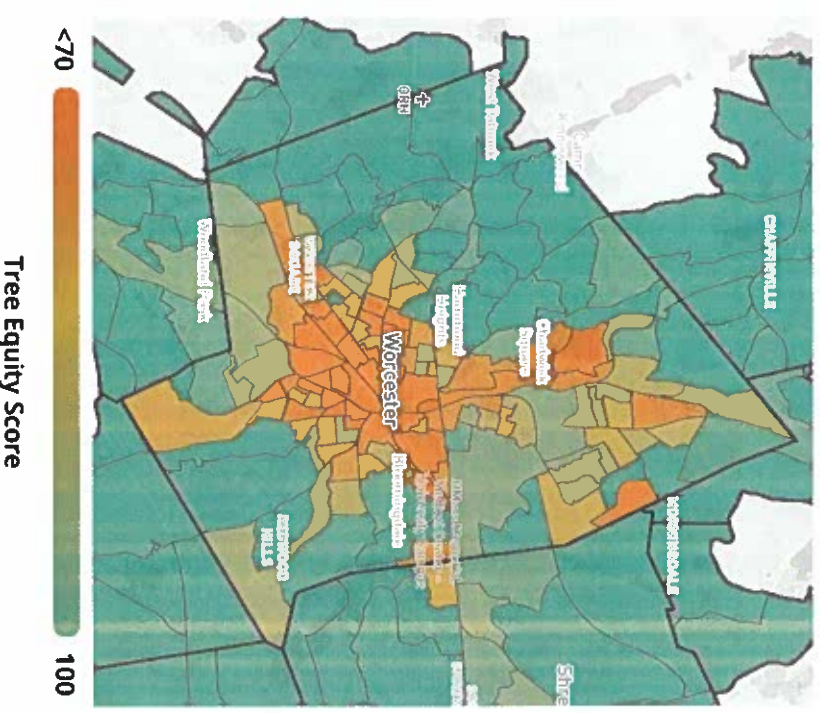


- study conducted in 2022 by Dept. of Sustainability and Resilience
- Recommendation to increase total tree canopy in Worcester by 30,000 – 35,000 trees by 2050 in areas with little tree cover.



Tree canopy in Worcester is not equitably distributed

- There is low canopy cover in downtown Worcester where it is needed the most but also has the least amount of current planting location opportunities
- We need to get creative about planting trees in our most densely populated areas of the City



<https://www.treeequityscore.org/about>

Street Tree Inventory



Table 1. Street tree population changes 2005 to 2022 by Council District and citywide.

	District 1	District 2	District 3	District 4	District 5	Worcester
Number of Trees—2005	5,880	2,370	1,689	1,302	4,245	15,486
Number of Trees—2022	8,437	3,869	3,021	1,460	6,350	23,137
% change from 2005—2022	+43%	+63%	+79%	+12%	+50%	+49%
% trees per district—2022	36%	17%	13%	6%	27%	100%
Trees per public street mile—2022	72	33	36	24	55	47



Opportunities for growth

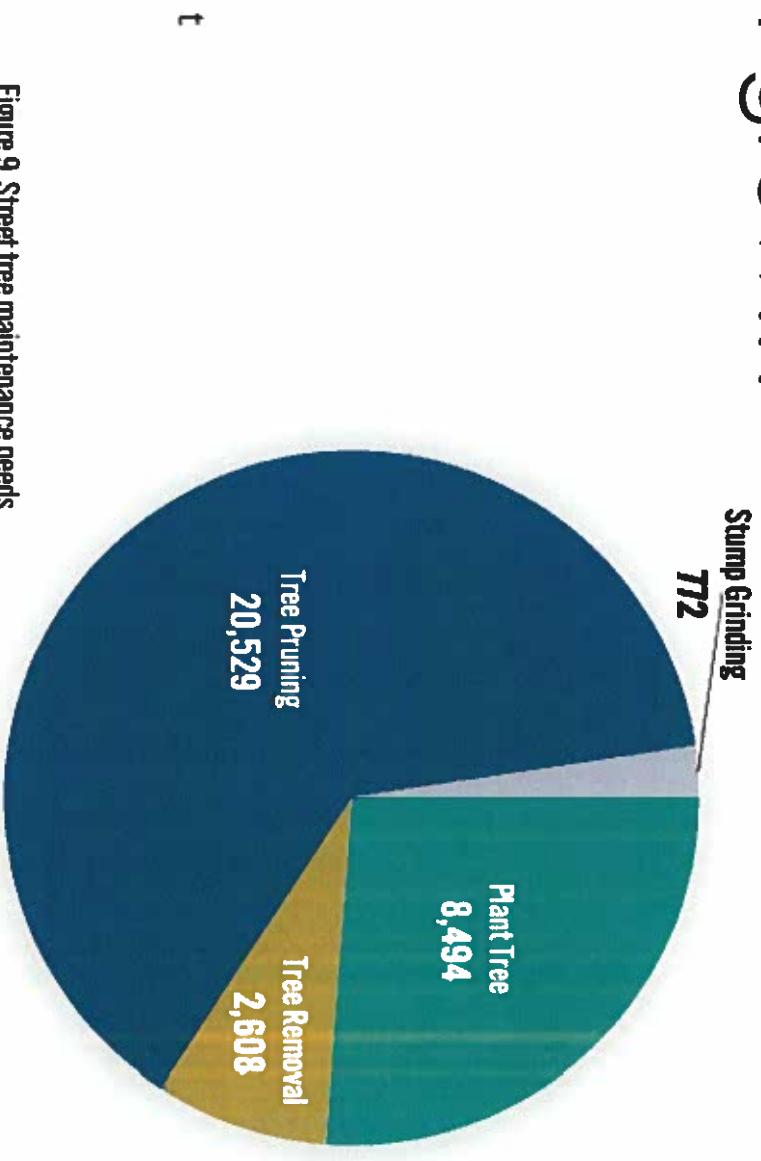


Figure 9. Street tree maintenance needs



Our street tree populations are becoming more diverse

	2005			2022		
	Species	Count	Percent of Total Population	Species	Count	Percent of Total Population
1	Norway maple (<i>Acer platanoides</i>)	9,364	60%	Norway maple (<i>Acer platanoides</i>)	6,522	28%
2	Sugar maple (<i>Acer saccharum</i>)	1,346	9%	Cherry (<i>Prunus</i> spp.)	1,700	7%
3	Red maple (<i>Acer rubrum</i>)	1,029	7%	Littleleaf linden (<i>Tilia cordata</i>)	1,161	5%
4	Silver maple (<i>Acer saccharinum</i>)	342	2%	Pin oak (<i>Quercus palustris</i>)	1,075	5%
5	Littleleaf linden (<i>Tilia cordata</i>)	335	2%	Honeylocust (<i>Gleditsia triacanthos</i>)	1,018	4%
6	Red oak (<i>Quercus rubra</i>)	327	2%	Red maple (<i>Acer rubrum</i>)	1,005	4%
7	Callery pear (<i>Pyrus calleryana</i>)	270	2%	Silver maple (<i>Acer saccharinum</i>)	820	4%
8	Pin oak (<i>Quercus palustris</i>)	265	2%	Red oak (<i>Quercus rubra</i>)	708	3%
9	White ash (<i>Fraxinus americana</i>)	225	1%	Northern white cedar (<i>Thuja occidentalis</i>)	671	3%
10	Japanese tree lilac (<i>Syringa reticulata</i>)	170	1%	Callery pear (<i>Pyrus calleryana</i>)	627	3%



To achieve increases in canopy cover we need to invest more in urban forestry City budget

We spend about a third less than cities with similar population size

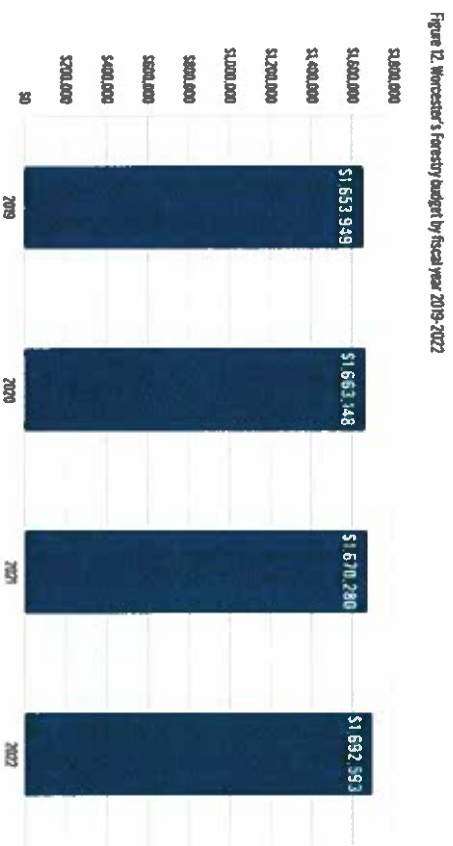


Figure 12. Worcester's Forestry budget by fiscal year 2019-2022

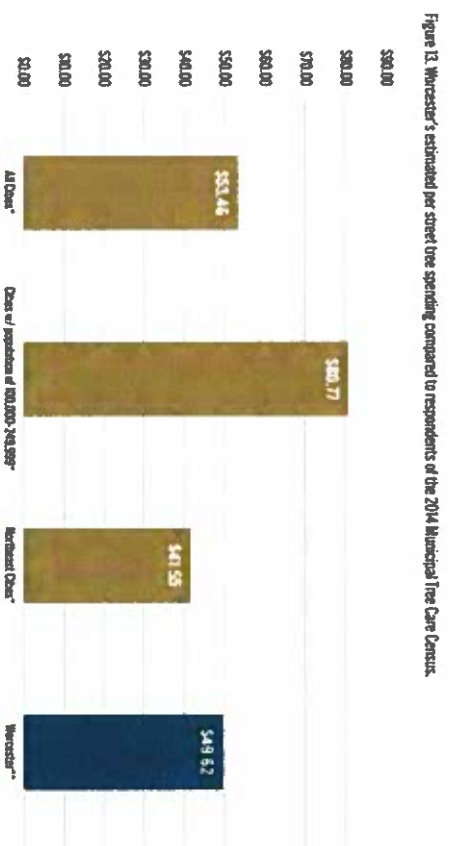


Figure 13. Worcester's estimated per street tree spending compared to respondents of the 2014 Municipal Tree Care Census.

*2014 Municipal Urban Forest Census. Per street tree costs have been adjusted for inflation and represent October 2022 costs (based on CPI inflation calculator)
 **Approximately 7% of forestry's annual operating budget goes towards non-tree care and planting related activities, including leaf rack and biomass recycling.



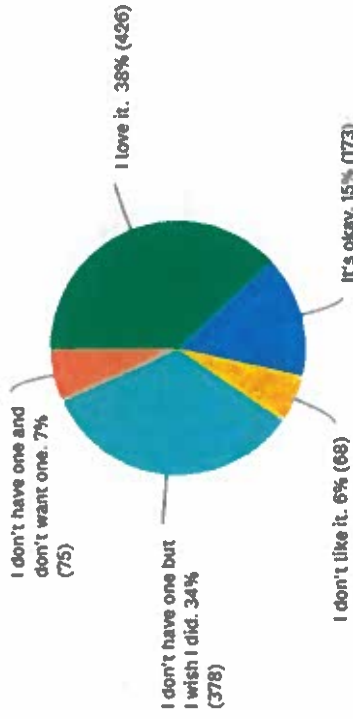
Community Survey

1,131 respondents in survey; >50% of respondents have lived in Worcester >11 years

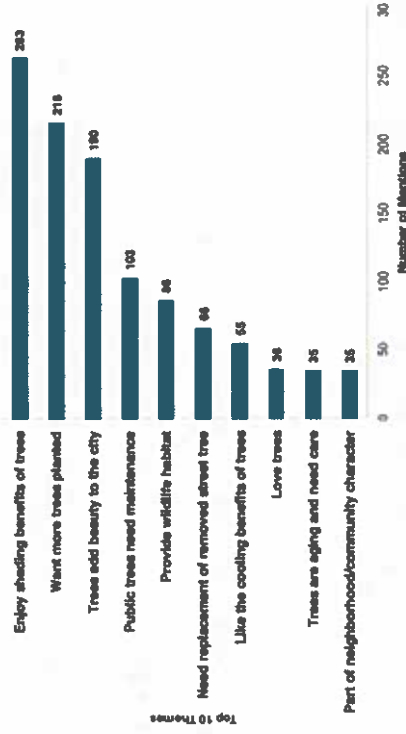
Community Meetings

- June 1, 2022
UFMP Community Open House (Stearns Tavern)
- June 2, 2022
UFMP Community Open House (Green Hill Park)
- September 21, 2022
District #2 UFMP Meeting
- September 22, 2022
District #5 UFMP Meeting
- October 17, 2022
District #1 UFMP Meeting
- October 19, 2022
District #3 UFMP Meeting
- October 20, 2022
District #4 UFMP Meeting

How do you feel about the street tree in front of your home?



Why do you feel the way you do about your street tree?



Community partners

- Clark University
- Greater Worcester Land Trust
- Mass Audubon
- Massachusetts Dept. of Conservation & Recreation
- National Grid
- New England Botanic Garden at Tower Hill
- Regional Environmental Council
- Worcester GreenCorp (Chamber of Commerce)
- Worcester Polytechnic Institute



Plan Recommendations

1. Establish a proactive management program for Worcester's public trees that is beyond the current Customer Service based model.
2. Increase City staff and contractors to transition to a proactive public tree management program and support urban forest planning, operations, and education.
3. Revise and develop urban forestry processes to support improvements to customer service, service delivery, data, technology, and information management using national arboricultural standards and best management practices.
4. Expand and develop regulations, best management practices, and guidelines to support urban forest growth and preservation.
5. Ensure there is adequate space for trees to grow and thrive in Worcester's challenging urban environment.
6. Conduct a comprehensive urban tree canopy assessment for the City of Worcester.
7. Continue tree planting and care citywide with attention to areas that advance city sustainability, resilience, and equity priorities.
8. Strengthen and develop partnerships with community and regional partners to support implementation of the urban forest master plan.
9. Implement an urban forestry communication and outreach plan that supports the growth and care of Worcester's urban forest.
10. Expand development and implementation of a program to monitor and address environmental threats to Worcester's urban forest.



Next steps

- June 5, 2024 WUFC meeting to discuss updated plan
- Updating Tree Ordinances
- Planning an annual Worcester Urban Forestry Summit for setting city-wide canopy goals and strategies



Questions?





City of Worcester

Department of Public Works & Parks

An Ordinance Relative to the Protection of Public Trees

Be it ordained by the city council of the city of Worcester, as follows:

Section 1. Chapter 12 of the Revised Ordinances of 2008 is hereby amended by inserting after Section 27 thereof the following new Section 28, as follows:

§ 28. Protection of Public Trees

(a) **Purpose.** The city council recognizes the importance of an urban forest and that, in the city's ecosystem, trees contribute to air quality, reduce noise and visual pollution, help to moderate climatic extremes and conserve energy. The city's public trees enhance the visual and aesthetic attributes of streets, parks and other public places for residents, businesses and visitors. The city council recognizes the role of trees in enhancing property values and the overall quality of life. The city council further recognizes that the city has suffered severe tree loss due to efforts to eradicate the Asian Longhorn Beetle infestation and the severe ice storm of December 2008. It is the purpose of this section to promote and protect the public health, safety and general welfare by providing for the regulation of the planting, maintenance and removal of public trees in Worcester, Massachusetts.

(b) **Definitions.** The following words and phrases, when used in this section, shall have the following meanings:

Park Trees - means any trees, shrubs, bushes and all woody vegetation on land lying within public parks having names and in all other areas owned by the city of Worcester and to which the public has access.

Public Shade Tree - shall have the meaning set forth in G.L. c. 87, §§ 1 through 8.

Topping - means the severe cutting back of limbs to stubs within the tree's crown to such a degree so as to remove the normal canopy and disfigure the tree.

(c) **Public Shade Trees.** No Public Shade Tree shall be cut, trimmed, or removed, in whole or in part, without the prior written approval of the tree

Shade Trees or Park Trees be planted in any of the streets, parking lots, parks and other public places abutting lands to be developed and/or subdivided.

(k) **Rulemaking Authority.** The commissioner of the department of public works & parks shall have the authority to make rules and regulations necessary to implement and enforce this section.

(l) **Enforcement.** The commissioner of the department of public works & parks shall have the power to enforce this section.

(m) **Violations.** Any person who violates any provision of this section or who fails to comply with any notice issued pursuant to provisions of this section, upon being found guilty of violation, shall be subject to a fine not more than three hundred (\$300.00) dollars for each separate offense. Each day during which any violation of the provisions of this section shall occur or continue shall be a separate offense.

If, as a result of the violation of any provision of this section, a Public Shade Tree, Park Tree or other plant covered by this section located on city-owned property is damaged or dies, the cost of repair or replacement of such Public Shade Tree, Park Tree or other plant covered by this section shall be borne by the party in violation. The replacement value of trees shall be as set forth above, and the value of other plants shall be determined in accordance with the then latest revision of *A Guide to the Professional Evaluation of Landscape Trees, Specimen Shrubs, and Evergreens*, as published by the International Society of Arboriculture.

(n) **Applicability.** To the extent permitted by law, if any provision of these sections imposes greater restrictions or obligations than those imposed by any other general law, special law, regulation, rule, ordinance, order, or policy, then the provisions of these sections shall control.

Section 2. Chapter 15, Section 2(b), of the Revised Ordinances of the city of Worcester (2008) is hereby amended by inserting the following new subsection 28 at the conclusion thereof as follows:

(28) Protection of Public Trees

Enforcing Persons: Commissioner of Public Works & Parks

Penalty: \$300.00

Section 3. When inserting the foregoing sections into the Revised Ordinances of the city, the city clerk, in consultation with the city solicitor, shall have authority to revise the numbering or formatting of any section, article, chapter or similar reference to be consistent with the numbering and format of the Revised Ordinances of the city.

Section 4. These sections shall take effect on passage.

warden, or his/her designee, in accordance with the requirements of G.L. c. 87, §§ 1 through 8.

(1) The person requesting the cutting, trimming or removal of any Public Shade Tree shall pay the costs of advertising and notification of the hearing required by G.L. c. 87. If the cutting, trimming or removal of a healthy Public Shade Tree is approved by the tree warden, then the person requesting the same, as a condition of such approval, shall pay a fee reflecting the city's full costs related thereto.

(A) Notwithstanding subsection (c)(1) above, in light of the city's priority to establish off street parking, the fee for cutting, trimming or removal of a healthy public shade tree shall be reduced by fifty (50%) percent if such cutting, trimming or removal is deemed necessary by the tree warden to allow for the construction of a driveway and the person requesting such removal has first obtained a permit for a curb cut from the city, in compliance with the department of public works & parks permit manual.

(2) In addition to the cost of cutting, trimming or removal set forth in subsection (c)(1), if cutting, trimming or removal of a healthy Public Shade Tree is approved by the tree warden, the person requesting cutting, trimming or removal also shall pay a fee reflecting the cost of the replacement of the tree, as a condition of removal. The fee shall be established annually by the commissioner of the department of public works & parks. The cost of purchase and planting shall be determined by the diameter in inches at breast height (DBH) of the tree removed.

(3) If a healthy public shade tree is damaged, destroyed or for any reason removed without the consent of the tree warden, the individual or other entity responsible shall pay the full removal fee and the full cost of replacement, as set forth in subsections (c)(1) and (2) above, in addition to any and all applicable fine(s).

(d) **Park Trees.** No person shall plant, cut, trim, remove, or otherwise disturb any Park Tree unless that person has first obtained written permission from the tree warden. The person making such request shall be required to pay any and all costs related to the allowed activity, including the fee for the replacement tree in accordance with the subsection (c) above, as applicable.

(e) **Planting Trees.** No person shall plant any tree within the public way or the boundaries thereof, or within any city park, without the prior written permission of the tree warden. The department of public works & parks shall maintain a list of species of trees that are suitable trees for planting along streets. All trees shall be planted in compliance with the tree warden's instructions, including but not limited to the minimum distance from any curb, sidewalk, street, structure or other tree.

(1) **Planting Trees Adjoining the Layout.** The tree warden, if he or she deems it expedient, may plant shade trees on land adjoining the public way at a distance of not more than twenty feet from the layout of the public way for the purpose of improving, protecting, shading or ornamenting the same; provided, however, that the written consent of the owner of such adjoining land shall first be obtained.

(f) **Authorization to Plant, Cut, Trim, Remove, Spray or Otherwise Treat Public Shade Trees.** Except as set forth expressly herein, only the tree warden, his/her designee or a contractor retained by the city, may cut, trim or remove any Public Shade Tree. The tree warden may authorize an individual or entity to cut, trim or remove a Public Shade Tree or Park Tree if said individual or entity is an International Society of Arboriculture (ISA) certified arborist and provides evidence of insurance acceptable to the city.

(1) **Topping.** Except as set forth in this subsection, no Public Shade Tree or Park Tree shall be topped. Trees damaged by storms or other causes, or particular trees under utility wires or other obstructions where other pruning practices are impractical may be topped with the prior written approval of the tree warden.

(g) **Utilities.** In compliance with the applicable franchise agreements with the city and other applicable law, the electric utility company may cut or trim tree limbs or remove trees that interfere with high voltage electrical conductors, provided said electric utility company first notifies the tree warden in writing and submits a plan for such cutting, trimming or removal acceptable to the tree warden. The electric utility company shall further submit a utility tree trimming policy that shall be reviewed by a designated representative of the electric utility company and the tree warden, or his/her designee prior to the commencement of any cutting, trimming or removal by any electric utility company.

(h) **Shade Tree Protection During Construction, Repairs, Utility Work.** Public Shade Trees and Park Trees shall be protected to the full extent feasible from damage during construction, street and sidewalk repair, utilities work above and below ground, and other similar activities. The area of protection shall include the ground beneath the canopy of the tree. Prior to commencing construction, Contractors shall obtain a permit from the tree warden including a plan acceptable to the tree warden showing how the relevant Public Shade Trees and/or Park Trees will be protected.

(i) **Removal of Diseased, Infested Trees.** As set forth in G.L. c. 132, § 13, the tree warden shall be designated as the Superintendent of Shade Tree Management and Pest Control.

(j) **Provide Support and Information to Planning Board.** In new subdivisions or when the development of commercial property occurs, the tree warden will review landscaping plans and may recommend that Public

Tree Planting Proposal for Urban Forestry Tree Commission

WPI Green Team



WPI



Core Values

- Sustainability, Action, & Justice
- Empower communities and safeguard the environment by planting trees around campus

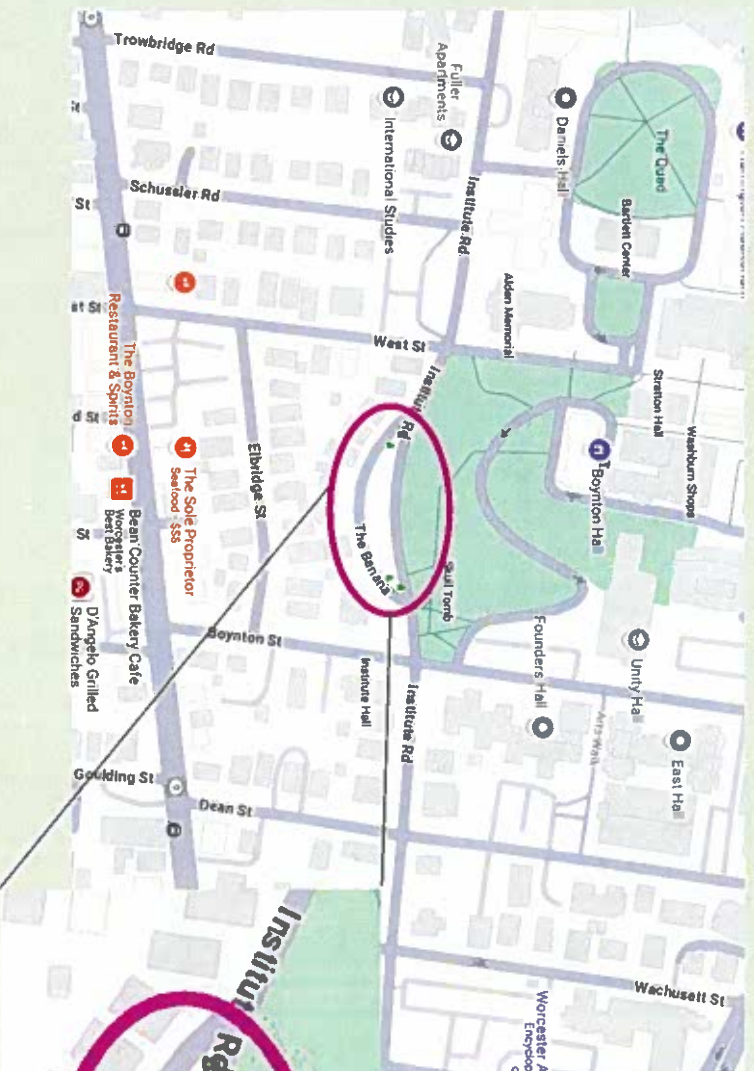
As members of the Worcester community we want to make an impact that extends beyond our 4 years!

Our Goals:

Align with the Urban Forest Master Plan to plant trees around campus.



Location of interest



- Close to campus
- Already has 4 tall trees planted on the corners
- Space for 2-3 more
- No powerlines to obstruct



We Propose Planting:

Potential Types of Trees:

- Ash (Fraxinus spp.)
- Mountain-ash (Sorbus spp.)
- Birch (Betula spp.)
- Elm (Ulmus spp.)
- Maple (Acer spp.)
- Poplar (Populus spp.)
- Sycamore / Planetree (Platanus spp.)
- Hackberry (Celtis spp.)
- Willow (Salix spp.)
- Evergreens

Factors Considered:

- Local
- Resilient
- Diverse
- Size/Age
- Root depth

Funds & Timeline

- \$50-100 per tree
- >40 ft tall trees
- Funds:
 - \$500
 - About 3 trees
- Looking to plant in April of 2025
- Planning and fundraising (if needed) efforts will take place from now until April

**Thank you for your
time & consideration.**

URBAN FORESTRY TREE COMMISSION MEETING

Wednesday October 9, 2024 – 6:00 P.M.

Parks, Recreation & Cemetery Administrative Office

Meeting Room A

50 Officer Manny Familia Way Worcester, MA 01605

Or

Virtual with Teams

ASSISTANT COMMISSIONER'S REPORT

GENERAL



ASSISTANT COMMISSIONER'S REPORT:

1. General

- Urban Forest Master Plan Review
 - Update – Commission Approved Draft available at [Trees in the City - Right Tree, Right Place | City of Worcester, MA \(worcesterma.gov\)](#)
- Quarterly Review of Forestry Work - Update
- Tree Commission attending neighborhood meetings – Update
- Tree replacement policy – NA
- Neighborhood Based Urban Heat Risk Assessment - NA
- Worcester Now | Next online survey - NA
- Green Worcester Advisory Committee -NA
- Planting –
 - Spring 2024 Planting - NA
- Customer Service Update
 - Customer Service Contact Information 508-929-1300 &/or 311
- Street Resurfacing Opportunities & Challenges – NA
- Zoning Ordinance Discussion - NA
- Worcester Ordinance Relative to the Protection of Public Trees - NA
- Partnerships –
 - New England Botanical Garden @ Tower Hill - NA
- Grant Applications –
 - DCR Grant Program - NA
- Economic Development Initiatives –
 - NA
- Forestry Vandalism & Graffiti –
 - NA
- Donations –
 - NA
- Pests –
 - ALB (Asian Longhorned Beetle) - NA
 - EAB (Emerald Ash Borer) - NA
 - Spotted Lanternfly - NA
 - Elm Zigzag Sawfly – NA
- Forestry Operations –
 - Tree City USA – NA
 - Awarded the Tree City USA designation for the 38th consecutive year
 - Awarded the Tree City USA Growth Award designation for the 25th consecutive year
 - Arbor Day – Update
 - April 25, 2025
 - April 26, 2025 – Festival (Tentative)
- Budget – Operational & Capital – NA
 - Parks, Recreation & Cemetery Division – NA
 - Capital Improvement Program – NA
 - City Five Point Financial Plan – NA
- Misc.

City of Worcester
DPW&Parks
Parks, Recreation, Cemetery Division
Forestry Operations

Count per Work Type

