



The City of
WORCESTER

City Clerk Department

Nikolin Vangjeli, City Clerk

Stephen A.J. Pottle, Deputy City Clerk

Clare M. Robbins, Deputy City Clerk

**BOARD OF ELECTION
COMMISSIONERS MEETING**

WEDNESDAY, JANUARY 15, 2025, 5:00 P.M.

ESTHER HOWLAND CHAMBER, WORCESTER CITY HALL

Call to Order by the Chairperson

Pledge of Allegiance

Roll Call

Approval of the Minutes of the November 11, 2024 meeting

NEW BUSINESS

1. Discussion concerning polling locations for the 2025 Election Season.
2. Update on the 2025 Census / Annual Street listing
3. Update on the Nomination Papers for the 2025 Municipal Elections.
 - a. *Tuesday, March 4th, 8:45 am First day & hour to access nomination papers @ the offices of the Board of Election Commissioners, Room 208, City Hall.*
 - b. *Tuesday, May 6th, 5:00 pm Last day & hour for submitting nomination papers to the Board of Election Commissioners for certification of signatures.*
4. 2025 Election dates and deadlines voted by City Council
 - a. *Tuesday, Sept. 2nd Preliminary Election, Polls are open 7:00 am to 8:00 pm. (if necessary, Worcester Charter Section 7-4f)*
 - b. *Tuesday, Nov. 4th Municipal Election, Polls are open 7:00 am to 8:00 pm.*
5. Candidate Guide for the 2025 Municipal Election.
6. Community Meetings and Events
7. School Committee Districts and City Council Districts
Overview

Adjournment:

Next Meeting Date:



The City of
WORCESTER

City Clerk Department

Nikolin Vangjeli, City Clerk
Stephen A.J. Pottle, Deputy City Clerk
Clare M. Robbins, Deputy City Clerk

TO PARTICIPATE VIRTUALLY DURING THE MEETING:

PHONE NUMBER: +1 646 828 7666

Webinar ID: 161 385 1127

Log in via your computer:

<https://worcesterma.zoomgov.com/j/1613851127>

Board of Election, Commissioners' Meeting Minutes

Date: 9/26/24

Location: Levi Lincoln Chamber

Members Present: Kimberley Vanderspek, Cecilio Gonzalez, John DiCicco, Paul Franco and Joe Saco.

City Officials Present: Niko Vangjeli, Clare Robbins

Meeting was called to order at 5:30 pm

Pledge of Alliance was said.

First Business Item: Worcester Center for Crafts did not commit to open on time for future elections. Forest Grove School is willing to move forward as a polling location for the upcoming and future elections. The school gym will host the polling, around the rear of the school. There should ample parking as no classes are held on voting day.

Second Business Item: November 5th Election prep is underway and on schedule. Ballots arrived today. Approximately 20K to be mailed out with about 300 application arriving daily. Ballots postmarked on Nov 5th can be accepted as late as Nov 8th.

Third Business Item: Questions on ballot security brought up by Commissioner Franco. Signature verification is not done unless signature is "suspicious" – due to overwhelming logistics. All mail-in ballot envelopes are time stamped on arrival and are entered in the system so that they can be tracked online. All ballots are stored in a secure vault on site. All envelopes are checked against the voter list – at great effort, time and money – and stored in alphabetical order by precincts. Ballots without signatures are rejected and another ballot will be mailed with instructions to sign – up to three times.

Fourth/Fifth Business Item: Commissioners voted to move Ward 3 polling location to Forest Grove Middle School.

Next Meeting scheduled for Tuesday Nov 12th – 9 am

Meeting adjourned at 6:15 pm

Board of Election, Commissioners' Meeting Minutes

Date: TUESDAY, NOVEMBER 12, 2024, AT 8:30 AM

Location: LEVI LINCOLN CHAMBER, CITY HALL

Members Present: Kimberley Vanderspek, Cecilio Gonzalez, Joe Sacco

City Officials Present: Niko Vangjeli, Clare Robbins

Meeting was called to order at 8:30 am.

Pledge of Allegiance was said.

First Item of Business:

November 5th, 2024, State Election Post-Election tabulation session was conducted.

Second Item of Business:

Section 109A of Chapter 54 of the General Laws requires random post-election audits to be conducted after presidential elections. Under this law, 3% of all precincts in Massachusetts must be hand-counted.

- a. Deadline to begin the audit: Tuesday, November 12, 2024.**
- b. Requirement: Municipality must begin the audit no later than 2 business days after the drawing by the secretary of state on Thursday, November 7, 2024.**

Worcester was not selected as a post- election audit City. No audit conducted.

Adjournment: 10:30am

Next Meeting Date: TBD

List of Wards, Precincts and Polling Places

Ward	Prnct	Polling Place Name	Polling Place Address
01	01	CONGREGATION BETH ISRAEL	15 JAMESBURY DRIVE, SOCIAL HALL - LOCAL DISTRICT COUNCIL #1 - SCHOOL #A
	02	NELSON PLACE ELEM. SCHOOL	35 NELSON PLACE, GYMNASIUM - LOCAL DISTRICT COUNCIL #1 - SCHOOL #A
	03	ASSUMPTION UNIVERSITY	500 SALISBURY ST, ENTER LA MAISON FRANCAIS - LOCAL DISTRICT COUNCIL #1 - SCHOOL #A
	04	CONGREGATION BETH ISRAEL	15 JAMESBURY DR, ENTER SOCIAL HALL - LOCAL DISTRICT COUNCIL #1 - SCHOOL #F
	05	MARKET 32, PRICE CHOPPER	72 PULLMAN STREET, ENTER LEFT FRONT DOORWAY - LOCAL DISTRICT COUNCIL #1 - SCHOOL #A
	06	UNITARIAN UNIVERSALIST	90 HOLDEN STREET, ENTER FELLOWSHIP HALL - LOCAL DISTRICT COUNCIL #1 - SCHOOL #A
02	01	SALEM COVENANT CHURCH	215 EAST MOUNTAIN STREET, ENTER SOCIAL HALL AT REAR OF BUILDING - LOCAL DISTRICT COUNCIL #1 - SCHOOL #A
	02	ZION LUTHERAN CHURCH HALL	41 WHITMARSH AVENUE, ENTER LOWER LEVEL HALL FROM LEEDS STREET, SIDE OF BUILDING - LOCAL DISTRICT COUNCIL #1 - SCHOOL #A
	03	BURNCOAT HIGH SCHOOL	179 BURNCOAT ST, ENTER GYMNASIUM IN THE BACK OF SCHOOL - LOCAL DISTRICT COUNCIL #1 - SCHOOL #A
	04	LINCOLN VLG. TENANT ASSOC	116 COUNTRY CLUB BLVD, ENTER FROM VICKSBURG AVE - LOCAL DISTRICT COUNCIL #1 - SCHOOL #B
	05	GBV MULTI PURPOSE BLDG	180 CONSTITUTION AVE - LOCAL DISTRICT COUNCIL #1 - SCHOOL #B
	06	SALEM COVENANT CHURCH	215 MOUNTAIN STREET, EAST ENTER SOCIAL HALL AT REAR OF BUILDING - LOCAL DISTRICT COUNCIL #1 - SCHOOL #A
	06A	SALEM COVENANT CHURCH	215 MOUNTAIN STREET, EAST ENTER SOCIAL HALL AT REAR OF BUILDING - LOCAL DISTRICT COUNCIL #1 - SCHOOL #B
03	01	WORCESTER TECHNICAL H.S.	1 OFFICER MANNY FAMILIA WAY, GYMNASIUM - LOCAL DISTRICT COUNCIL #2 - SCHOOL #B
	02	BELMONT TOWER APARTMENTS	40 BELMONT STREET, ENTER COMMUNITY ROOM FROM PARKING LOT - LOCAL DISTRICT COUNCIL #2 - SCHOOL #B
	03	FOREST GROVE SCHOOL, GYM	495 GROVE STREET, POLLING LOCATION ENTRANCE BACK OF SCHOOL IN THE GYM - LOCAL DISTRICT COUNCIL #2 - SCHOOL #A
	03A	FOREST GROVE SCHOOL, GYM	495 GROVE STREET, POLLING LOCATION ENTRANCE BACK OF SCHOOL IN THE GYM - LOCAL DISTRICT COUNCIL #2 - SCHOOL #B
	04	WORCESTER TECHNICAL H.S.	1 OFFICER MANNY FAMILIA WAY, GYMNASIUM - LOCAL DISTRICT COUNCIL #2 - SCHOOL #B
	05	LIVING WORD CHURCH WORC.	30 TYLER PRENTICE ROAD, ENTER HALL FROM MAIN DOOR - LOCAL DISTRICT COUNCIL #2 - SCHOOL #C
	05A	LIVING WORD CHURCH WORC.	30 TYLER PRENTICE ROAD, ENTER HALL FROM MAIN DOOR - LOCAL DISTRICT COUNCIL #2 - SCHOOL #B
	06	BURNCOAT HIGH SCHOOL	179 BURNCOAT STREET, ENTER GYMNASIUM IN THE BACK OF SCHOOL - LOCAL DISTRICT COUNCIL #2 - SCHOOL #B
04	01	FRIENDLY HOUSE	36 WALL STREET, ENTER GYM FROM REAR OF BUILDING - LOCAL DISTRICT COUNCIL #2 - SCHOOL #D
	02	AMERICAN LEGION POST	326 PLANTATION ST, PARKING IS AT THE BACK OF THE BUILDING, ENTER FROM WELL ST - LOCAL DISTRICT COUNCIL #2 - SCHOOL #C
	02A	AMERICAN LEGION POST	326 PLANTATION ST, PARKING IS AT THE BACK OF THE BUILDING, ENTER FROM WELL ST - LOCAL DISTRICT COUNCIL #2 - SCHOOL #C
	02B	AMERICAN LEGION POST	326 PLANTATION ST, PARKING IS AT THE BACK OF THE BUILDING, ENTER FROM WELL ST - LOCAL DISTRICT COUNCIL #2 - SCHOOL #B

List of Wards, Precincts and Polling Places

Ward	Prnct	Polling Place Name	Polling Place Address
04	03	WORCESTER PUBLIC LIBRARY	3 SALEM SQUARE, MAIN LIBRARY, SAXE ROOM - LOCAL DISTRICT COUNCIL #2 - SCHOOL #C
	04	MT. CARMEL APARTMENTS	50 SHREWSBURY STREET - LOCAL DISTRICT COUNCIL #2 - SCHOOL #C
	05	LINCOLN PARK TOWER	11 LAKE AVENUE, ENTER COMMUNITY ROOM THROUGH MAIN DOOR - LOCAL DISTRICT COUNCIL #2 - SCHOOL #C
	06	NORTH HIGH SCHOOL	140 HARRINGTON WAY, GYMNASIUM - LOCAL DISTRICT COUNCIL #2 - SCHOOL #C
05	01	ADDISON APARTMENTS	6 ADDISON STREET, ENTER FROM RIGHT SIDE OF BUILDING - LOCAL DISTRICT COUNCIL #3 - SCHOOL #C
	02	NORTH HIGH SCHOOL	140 HARRINGTON WAY, GYMNASIUM - LOCAL DISTRICT COUNCIL #3 - SCHOOL #C
	03	LAKE PARK COMMUNITY HOUSE	300 LAKE AVENUE, ENTER FROM HAMILTON STREET - LOCAL DISTRICT COUNCIL #3 - SCHOOL #C
	04	MASS. AUDUBON SOCIETY	414 MASSASOIT ROAD, LEARNING CENTER ON LEFT OF PARKING LOT - LOCAL DISTRICT COUNCIL #3 - SCHOOL #C
	05	MASS. AUDUBON SOCIETY	414 MASSASOIT ROAD, VISITOR CENTER - LOCAL DISTRICT COUNCIL #3 - SCHOOL #E
	06	OUR LADY OF LORETO	33 MASSASOIT ROAD, REAR, PARISH CTR - LOCAL DISTRICT COUNCIL #3 - SCHOOL #C
06	01	WORCESTER SENIOR CENTER	128 PROVIDENCE STREET, ENTER FROM PARKING LOT ON SPURR STREET- LOCAL DISTRICT COUNCIL #3 - SCHOOL #D
	02	WORCESTER SENIOR CENTER	128 PROVIDENCE STREET, ENTER FROM PARKING LOT ON SPURR STREET - LOCAL DISTRICT COUNCIL #3 - SCHOOL #D
	03	BLACKSTONE HERITAGE CORR	3 PAUL CLANCY WAY, VISITOR CENTER, ENTER THROUGH 115 MCKEON ROAD - LOCAL DISTRICT COUNCIL #3 - SCHOOL #D
	04	SAINT MATTHEWS CHURCH	695 SOUTHBRIDGE STREET - LOCAL DISTRICT COUNCIL #3 - SCHOOL #E
	05	BLACKSTONE HERITAGE CORR	3 PAUL CLANCY WAY, VISITOR CENTER, ENTER THROUGH 115 MCKEON ROAD- LOCAL DISTRICT COUNCIL #3 - SCHOOL #E
	06	EMANUEL LUTHERAN CHURCH	200 GREENWOOD STREET, ENTER SOCIAL HALL FROM THE BACK OF THE BUILDING - LOCAL DISTRICT COUNCIL #3 - SCHOOL #E
07	01	BEAVER BROOK PARK BLDG	15 MANN STREET, ENTER COMMUNITY HOUSE FROM MANN STREET - LOCAL DISTRICT COUNCIL #5 - SCHOOL #F
	02	COES POND VILLAGE	39 FIRST STREET, ENTER LOWER LEFT SIDE OF BUILDING - LOCAL DISTRICT COUNCIL #5 - SCHOOL #E
	03	STEARNS TAVERN	140 MILL STREET, ENTER FROM THE BACK OF BUILDING - LOCAL DISTRICT COUNCIL #5 - SCHOOL #E
	04	SHAW'S SUPERMARKET	68 STAFFORD STREET, ENTER MAIN DOOR AND TURN LEFT TOWARDS OFFICES - LOCAL DISTRICT COUNCIL #5 - SCHOOL #E
	05	HADWEN PARK CHURCH	6 CLOVER STREET, ENTER COMMUNITY ROOM FROM MAIN DOOR OFF CLOVER STREET - LOCAL DISTRICT COUNCIL #5 - SCHOOL #E
	05A	HADWEN PARK CHURCH	6 CLOVER STREET, ENTER COMMUNITY ROOM FROM MAIN DOOR OFF CLOVER STREET - LOCAL DISTRICT COUNCIL #5 - SCHOOL #E
	06	SHAW'S SUPERMARKET	68 STAFFORD STREET, ENTER MAIN DOOR AND TURN LEFT TOWARDS OFFICES - LOCAL DISTRICT COUNCIL #5 - SCHOOL #E
08	01	WORCESTER SENIOR CENTER	128 PROVIDENCE STREET, ENTER FROM PARKING LOT ON SPURR STREET - LOCAL DISTRICT COUNCIL #4 - SCHOOL #D

List of Wards, Precincts and Polling Places

Ward	Prnct	Polling Place Name	Polling Place Address
08	02	SAINT PETER'S CHURCH, GYM	929 MAIN STREET, ENTER GYMNASIUM FROM GRAND STREET - LOCAL DISTRICT COUNCIL #4 - SCHOOL #D
	03	SAINT PETER'S CHURCH, GYM	929 MAIN STREET, ENTER GYMNASIUM FROM GRAND STREET - LOCAL DISTRICT COUNCIL #4 - SCHOOL #F
	04	WEBSTER SQUARE TOWERS	1050 MAIN STREET, ENTER COMMUNITY ROOM AT REAR OF BUILDING - LOCAL DISTRICT COUNCIL #4 - SCHOOL #D
	05	SOUTH WORC. NEIGHBORHOOD	47 CAMP STREET, ENTER NEIGHBORHOOD CENTER FROM PARKING LOT IN THE BACK - LOCAL DISTRICT COUNCIL #4 - SCHOOL #E
	06	SAINT MATTHEWS CHURCH	695 SOUTHBRIDGE STREET - LOCAL DISTRICT COUNCIL #4 - SCHOOL #D
09	01	BLESSED SACRAMENT	551 PLEASANT STREET, PHELAN CENTER, GYM - LOCAL DISTRICT COUNCIL #5 - SCHOOL #F
	02	BLESSED SACRAMENT	551 PLEASANT STREET, PHELAN CENTER, GYM - LOCAL DISTRICT COUNCIL #5 - SCHOOL #F
	03	CHRIST THE KING CHURCH	1052 PLEASANT STREET, SOCIAL ROOM IN THE BACK OF THE CHURCH - LOCAL DISTRICT COUNCIL #5 - SCHOOL #F
	04	SEVENTH-DAY ADVENTIST	2 AIRPORT DRIVE, ENTER FELLOWSHIP HALL FROM AIRPORT DR PARKING LOT - LOCAL DISTRICT COUNCIL #5 - SCHOOL #F
	05	CONGREGATION BETH ISRAEL	15 JAMESBURY DRIVE, SOCIAL HALL - LOCAL DISTRICT COUNCIL #5 - SCHOOL #F
	06	CHRIST THE KING CHURCH	1052 PLEASANT STREET, SOCIAL ROOM IN THE BACK OF THE CHURCH - LOCAL DISTRICT COUNCIL #5 - SCHOOL #F
10	01	ORDER OF AHEPA LODGE	68 CEDAR STREET, ENTER THROUGH FRONT DOOR - LOCAL DISTRICT COUNCIL #4 - SCHOOL #F
	02	ORDER OF AHEPA LODGE	68 CEDAR STREET, ENTER THROUGH FRONT DOOR - LOCAL DISTRICT COUNCIL #4 - SCHOOL #B
	03	MURRAY AVENUE APARTMENTS	50 MURRAY AVENUE, ENTER COMMUNITY ROOM THROUGH FRONT DOOR - LOCAL DISTRICT COUNCIL #4 - SCHOOL #B
	04	ELM PARK TOWER	425 PLEASANT STREET, COMMUNITY ROOM - LOCAL DISTRICT COUNCIL #4 - SCHOOL #F
	04A	ELM PARK TOWER	425 PLEASANT STREET, COMMUNITY ROOM - LOCAL DISTRICT COUNCIL #4 - SCHOOL #B
	05	DEPT. OF INSPECTIONAL SRV	25 MEADE STREET - LOCAL DISTRICT COUNCIL #4 - SCHOOL #D
	06	YMCA CENTRAL BRANCH	766 MAIN ST, ENTER CONFERENCE ROOM FROM MAIN LOBBY - LOCAL DISTRICT COUNCIL #4 - SCHOOL #D

Total Number of Polling Places: 67
No. Pages of Printed: 3

*** End of Report ***



2025 Municipal Election Calendar

- Tuesday, March 4th, 8:45 am** **First day & hour to access nomination papers @ the offices of the Board of Election Commissioners, Room 208, City Hall.**
- Tuesday, May 6th, 5:00 pm** **Last day & hour for submitting nomination papers to the Board of Election Commissioners for certification of signatures.**
- Thursday, May 15th, 5:00 pm** **Last day & hour to file a withdrawal or objections to nomination of candidates with the Board of Election Commissioners.**
- Saturday, August 23rd** **Last day & hour to register to vote in the Preliminary Election. Office Hours 8 AM – 5 PM**
- Tuesday, Sept. 2nd** **Preliminary Election, Polls are open 7:00 am to 8:00 pm. (if necessary, Worcester Charter Section 7-4f)**
- Tuesday, Sept. 9th** **Last day & hour to decline nomination for election to Mayor, Council, or School Committee and for submitting non-binding public opinion advisory questions for certification of signatures.**
- Saturday, October 25th** **Last day & hour to register to vote in the Municipal Election. Office Hours 8 AM – 5 PM**
- Tuesday, Nov. 4th** **Municipal Election, Polls are open 7:00 am to 8:00 pm.**



2025 Calendario Elecciones Municipales

Martes 4 de Marzo, 8:45 am	Primer día y hora para tener acceso a los documentos de Nominación en las oficinas de la Junta de Comisionados Electorales, Municipio - Oficina #208.
Martes 6 de Mayo, 5:00 pm	Último día y hora para presentar o entregar los documentos de Nominación a la Junta de Comisionados Electorales para certificación de firmas.
Jueves 15 de Mayo, 5:00 pm	Último día y hora para presentar un retiro u objeciones a la nominación de candidatos con la Junta de Comisionados Electorales.
Sábado 23 de Agosto	Último día y hora para registrarse para votar en las Elecciones Primarias. Horario de Oficina: 8 AM – 5 PM
Martes 2 de Septiembre	Elecciones Preliminares, Centros de Votación estarán abiertos desde las 7:00 am hasta las 8:00 pm. (de ser necesario, Worcester Charter Section 7-4f)
Martes 9 de Septiembre	Último día y hora para declinar la nominación para elegir Alcalde, Concejo, o Comité Escolar y presentar consultas de opinión pública no vinculadas para la certificación de firmas.
Sábado 25 de Octubre	Último día y hora para registrarse para votar en las Elecciones Municipales. Horario de Oficina: 8 AM – 5 PM
Martes 4 de Noviembre	Elecciones Municipales, Centros de Votación permanecerán abiertos desde las 7:00 am hasta las 8:00 pm.



REQUIREMENTS TO HOLD LOCAL OFFICE

★You must be a registered voter in Worcester.

★**Councilor At-Large:** Any voter is eligible to hold the office of councilor at-large, if the voter shall have resided in the city for a period of at least one year.

★**District Councilor:** A district councilor at the time of their election shall be a voter of the district from which they are elected and shall have resided therein for a period of at least one year.

★**School Committee:** Any voter is eligible to hold the office of school committee member, provided, however, that they have resided within the city for one year immediately prior to the election.

★**District School Committee:** A district school committee member at the time of their election shall be a voter of the district from which they are elected and shall have resided therein for a period of at least one year.

★Request nomination papers from the Board of Election Commissioners, Room 208, City Hall.

NOMINATION PAPERS

Signature Requirements:

District Councilor: 100

District School Committee: 100

Councilor At-Large or School Committee: 300

Before circulating nomination papers for signatures, fill in all required information on the front and back of the nomination papers: The name of the candidate, residential address, candidate signature, justice of the peace or notary public signature.

SIGNATURES ON NOMINATION PAPERS

Procedures: To be certified, all signatures on nomination papers must be legible and signed in person, with the address at which the voters are registered. Voters must use street addresses, and not mailing addresses such as PO Box numbers.

District Boundaries: Signatures that are not in the correct City Council or School Committee District cannot be counted.

How Voter's Name Should Be Written: The law allows a voter to insert or omit a middle name or initial. Do not use nicknames or initials in place of given names. Do not use titles in place of a given name. To avoid legal objections, it is wise to consult a voting list, if available, and sign as registered. The law directs local election officials to certify the signature if they can reasonably determine the identity of the voter from the form of the signature. Voter info is searchable @ www.worcesterma.gov, then “**Where do I vote?**”

Collect Extra Signatures: Candidates are encouraged to collect at least 20% more signatures than required because some may be disallowed either in the certification process or through challenges.

CAMPAIGN FINANCE ACTIVITY

Chapter 55 of the Massachusetts General Laws covers all aspects of campaign finance law for state and local elections. The Office of Campaign and Political Finance has prepared comprehensive guides on campaign finance activities as they relate to local candidates, political action committees (PAC's), ballot questions committees, and public employees. For more information, contact Worcester Elections at (508) 799-1134 or OCPF at (617) 979-8300. You can also visit the OCPF website at <http://www.ocpf.us/>.

Reporting Contributions and Expenditures: The Office of Campaign and Political Finance is responsible for receiving and maintaining records for Depository Candidates and Committees (Mayor and City Council). The Worcester Election Office is responsible for receiving and maintaining records for School Committee Candidates.

Keep Complete Records: All candidates and political committees must record money or other things of value received from all sources, and all expenditures and disbursements must be reported and detailed records kept. Laws relating to campaign contributions and expenses are quite detailed and explicit and must be followed carefully.

2025 MUNICIPAL ELECTION CALENDAR

Tuesday, March 4th, 8:45 am **First day & hour to access nomination papers @ the offices of the Board of Election Commissioners, Room 208, City Hall.**

Tuesday, May 6th, 5:00 pm **Last day & hour for submitting nomination papers to the Board of Election Commissioners for certification of signatures.**

Thursday, May 15th, 5:00 pm **Last day & hour to file a withdrawal or objections to nomination of candidates with the Board of Election Commissioners.**

Saturday, August 23rd **Last day & hour to register to vote in the Preliminary Election. Office Hours 8 AM – 5 PM**

Tuesday, Sept. 2nd **Preliminary Election, Polls are open 7:00 am to 8:00 pm. (if necessary, Worcester Charter Section 7-4f)**

Tuesday, Sept. 9th **Last day & hour to decline nomination for election to Mayor, Council, or School Committee and for submitting non-binding public opinion advisory questions for certification of signatures.**

Saturday, October 25th **Last day & hour to register to vote in the Municipal Election. Office Hours 8 AM – 5 PM**

Tuesday, Nov. 4th **Municipal Election, Polls are open 7:00 am to 8:00 pm.**

OFFICE HOURS

**Monday 8:45 AM - 5:00 PM,
Tuesday - Friday 8:45 AM - 4:15 PM**

ADDITIONAL INFORMATION - CONTACT

**Niko Vangjeli, City Clerk
Clare M. Robbins, Deputy City Clerk
Phone: 508-799-1134
Email: elections@worcesterma.gov**

ELECTION DEFINITIONS AND HELPFUL ELECTION INFORMATION:

- **Board of Election Commissioners:** The City of Worcester Board of Election Commissioners consists of 2 Democrat members and 2 Republican members and 1 Unenrolled member.
- **City Clerk:** The City Clerk provides operational and administrative support to the Board of Election Commissioners and is the City's primary election and voter registration official.
- **Preliminary Election:** This Municipal Preliminary election is held for the purpose of narrowing down the number of candidates whose names shall appear on the official ballot at a municipal election.
- **Municipal Election:** The regular biennial election held for electing officers of the city which generally follows the Preliminary Municipal Election.
- **Wards:** A combination of precincts.
- **Precincts:** Small voting districts that make up a Ward.
- **Districts:** Combination of Wards & Precincts.

2025 MUNICIPAL ELECTION OVERVIEW

- **Step 1:** Pick Up nomination papers from the Board of Election Commissioners Room 208.
- **Step 2:** Qualify through the signature submission process by collecting the necessary number of certified signatures.
- **Step 3:** Ballot positions – Ballot drawing for the September preliminary.
- **Step 4:** Municipal Preliminary Election.
- **Step 5:** Ballot positions – Ballot drawing for the Municipal Election.
- **Step 6:** Municipal Election.

BALLOT POSITIONING:

The objective of the Ballot Position Drawing is to arbitrarily determine the order in which candidate's names will appear on the ballot. There is a Ballot Position Drawing for the Preliminary Municipal Election, and a second Ballot Position Drawing is held after the Preliminary Municipal Election for the Municipal Election. The Board of Election Commissioners will determine a date and location to host the drawing following the deadline for withdrawals and objections.

The process:

- The ballot position drawing will be conducted by the board of Election Commissioners and will begin with candidates for both district and at large seats, which will take place simultaneously.
- Every Candidate will have the opportunity to be present at the drawing or to send a representative on their behalf.
- Each candidate's information will be placed on to a card and announced in alphabetical order before being placed into a receptacle.
- Candidate information will include the office for which they are seeking (Name, city council or school committee district they reside in, and any statements, if any listed on the nomination paper).
- The information appearing on the card will be displayed on the ballot in the order drawn. The ballot position drawing is a public forum and is broadcast live on the City of Worcester Government Channel.

ELECTION DAY

- The polls are open from 7 A.M. to 8 P.M. Campaigning and electioneering are not allowed within 150 feet of the polling place during voting hours.
- Prohibited electioneering includes but is not limited to circulating any petition, soliciting votes, and displaying campaign signs. Candidates are prohibited from entering any polling location that is not the assigned polling location to vote.
- Election Night: After 8 p.m., candidates, members of the media, and public are invited to observe the vote tabulation from the "Public Viewing Area" in City Hall Room 208 Election Department. Results also live streamed on the city website and the local government channel.

2020 REDISTRICTING & DISTRICT SCHOOL COMMITTEE MEMBERS

2020 REDISTRICTING OF THE 5 CITY COUNCIL DISTRICTS

Every 10 years, the 5 City Council District lines are redrawn by the Worcester Board of Election Commissioners. This process happens after each federal census to make sure that each City Council district is made up of approximately the same number of people. For more information visit www.worcesterma.gov/elections.

ELECTING DISTRICT SCHOOL COMMITTEE MEMBERS

On September 1, 2022, Chapter 208 of the Acts of 2022 was signed into law that changed the Worcester City Charter starting with the 2023 Election. The School Committee will have **SIX** district seats and **TWO** at-large seats. The **SIX** districts are labelled as A, B, C, D, E, and F, which differentiates them from the numbered 5 City Council districts. For more information visit www.worcesterma.gov/elections.



Requisitos para Ocupar Cargo Electoral Local

★Usted debe estar registrado como votante en la ciudad de Worcester.

★**Concejal General:** Cualquier votante es elegible para ocupar el cargo de concejal general, después que el votante haya residido en la ciudad por un período de al menos un año.

★**Concejal de Distrito:** Un concejal de distrito en el momento de su elección será un votante del distrito del cual fue elegido y deberá haber residido en él, por un período de al menos un año.

★ **Comité Escolar:** Cualquier votante es elegible para ocupar el cargo de miembro del comité escolar, siempre que, haya residido dentro de la ciudad inmediatamente un año antes de la elección.

★ **Comité Escolar Distrital:** Un miembro del comité escolar del distrito en el momento de su elección, deberá ser un votante del distrito del cual fue elegido y deberá haber residido en él por un período de al menos un año.

★ Solicite los documentos de nominación con la Junta de Comisionados Electorales, Municipio Oficina #208, 455 Main St. Worcester, MA 01608.

Documentos de Nominación

Firmas Requeridas:

Concejal de Distrito: 100

Comité Escolar Distrital: 100

Concejal General o Comité Escolar: 300

Antes de distribuir los documentos de nominación para firmas, complete toda la información requerida en cada página de los documentos de nominación: el nombre del candidato, la dirección residencial, la firma del candidato, y la firma del juez de paz o notario público.

Firmas en Documentos de Nominación

Procedimientos: Para ser certificadas todas las firmas en los documentos de nominación deben ser legibles y firmadas en persona, con la dirección en la que están registrados los votantes. Los votantes deben usar direcciones de domicilios y no direcciones postales como números de P.O. Box

Límites Distritales: Las firmas que no están en el Concejo Municipal o el Distrito del Comité Escolar correcto no se pueden contar.

Escribiendo el Nombre del Votante: La ley permite que el votante inserte u omita su segundo nombre o inicial. No use apodos o iniciales en lugar de nombres determinados. No utilice títulos en lugar de un nombre determinado. Para evitar objeciones legales, si está disponible, es aconsejable consultar una lista de votación, y firmar como registrado. La ley ordena a los funcionarios electorales locales que; certifiquen la firma si pueden determinar razonablemente la identidad del votante con la firma proveída. Información del votante se puede encontrar en www.worcesterma.gov, en “**Where do I vote?**” (*¿Dónde Voto?*)

Firmas Adicionales: Se les recomienda a los candidatos recolectar al menos un 20% adicional a las firmas requeridas porque algunas pueden ser rechazadas en el proceso de certificación o validez.

Actividad Financiera de Campaña Electoral

El Capítulo 55 de las Leyes Generales de Massachusetts cubre todos los aspectos de la ley de financiamiento para campañas de elecciones estatales y locales. La Oficina de Campañas y Financiamiento de Política ha preparado una guía sobre las actividades de financiamiento de campañas en relación con los candidatos locales, los comités de acción política (CAP), los comités de preguntas de la boleta electoral y los empleados públicos. Para más información, comuníquese con la oficina de Elecciones de Worcester al (508) 799-1134 o OCPF al (617) 979-8300. También puedes visitar la página de OCPF al <http://www.ocpf.us/> .

Reporte de contribuciones y gastos: La Oficina de Campaña y Financiamiento Político es responsable de recibir y mantener registros para los candidatos y comités depositarios (Alcalde y Concejo Municipal). La Oficina Electoral de Worcester es responsable de recibir y mantener los registros de los candidatos al Comité Escolar.

Mantenga registros completos: Todos los candidatos y comités políticos deben registrar el dinero u otras cosas de valor recibidas de todas las fuentes, todos los gastos y desembolsos deben informarse y mantenerse en registros detallados. Las leyes relativas a las contribuciones y gastos de campaña política son bastante detalladas y explícitas y deben seguirse cuidadosamente.

2025 Calendario Elecciones Municipales

Martes 4 de Marzo, 8:45 am	Primer día y hora para tener acceso a los documentos de Nominación en las oficinas de la Junta de Comisionados Electorales, Municipio - Oficina #208.
Martes 6 de Mayo, 5:00 pm	Último día y hora para presentar o entregar los documentos de Nominación a la Junta de Comisionados Electorales para certificación de firmas.
Jueves 15 de Mayo, 5:00 pm	Último día y hora para presentar un retiro u objeciones a la nominación de candidatos con la Junta de Comisionados Electorales.
Sábado 23 de Agosto	Último día y hora para registrarse para votar en las Elecciones Primarias. Horario de Oficina: 8 AM – 5 PM
Martes 2 de Septiembre	Elecciones Preliminares, Centros de Votación estarán abiertos desde las 7:00 am hasta las 8:00 pm. (de ser necesario, Worcester Charter Section 7-4f)
Martes 9 de Septiembre	Último día y hora para declinar la nominación para elegir Alcalde, Concejo, o Comité Escolar y presentar consultas de opinión pública no vinculadas para la certificación de firmas.
Sábado 25 de Octubre	Último día y hora para registrarse para votar en las Elecciones Municipales. Horario de Oficina: 8 AM – 5 PM
Martes 4 de Noviembre	Elecciones Municipales, Centros de Votación permanecerán abiertos desde las 7:00 am hasta las 8:00 pm.

HORAS DE OFICINA

**Lunes 8:45 AM - 5:00 PM,
Martes - Viernes 8:45 AM - 4:15 PM**

Información Adicional

**Niko Vangjeli, City Clerk
Clare M. Robbins, Deputy City Clerk
Teléfono: 508-799-1134
Email: elections@worcesterma.gov**

Definiciones Electorales e Información Electoral Útil:

- **Junta de Comisionados Electorales:** La Junta de Comisionados Electorales de la Ciudad de Worcester consta de; 2 miembros Demócratas; 2 miembros Republicanos y 1 miembro no inscrito.
- **Secretario de la Ciudad:** El Secretario de la Ciudad es el Oficial de Registro de Votantes y Elecciones Primarias de la Ciudad, quien brinda apoyo operativo y administrativo a la Junta de Comisionados Electorales.
- **Elecciones Preliminares:** La Elección Preliminar Municipal se lleva a cabo con el propósito de reducir el número de candidatos cuyos nombres aparecerán en la boleta oficial en las Elecciones Municipales.
- **Elecciones Municipales:** La Elección bienal regular para elegir funcionarios de la ciudad, generalmente sigue a la Elección Municipal Preliminar.
- **Pabellón:** Una combinación de precinto electoral.
- **Precintos:** Pequeños precintos electorales que forman un Pabellón.
- **Distritos:** Combinación de pabellones y precintos electorales.

2025 Visión General de las Elecciones Municipales

- **Paso 1:** Recoger los documentos de Nominación en la Oficina #208 de la Junta de Comisionados Electorales.
- **Paso 2:** Calificar a través del proceso de envío de firmas por medio de la recopilación del número necesario de firmas certificadas.
- **Paso 3:** Posiciones en las Boletas – Sorteo de Boletas para las Elecciones Preliminares de Septiembre.
- **Paso 4:** Elecciones Municipales Preliminares.
- **Paso 5:** Posiciones en las Boletas – Sorteo de Boletas para las Elecciones Municipales
- **Paso 6:** Elecciones Municipales.

Posición en la Boleta:

El objetivo del sorteo es para determinar arbitrariamente la posición en la cual aparecerán los nombres de los candidatos en la boleta. En las Elecciones Municipales Preliminares se realizará un sorteo de posición.

Después de las Elecciones Municipales Preliminares, se realizará un segundo sorteo para la posición en la boleta en las Elecciones Municipales. La Junta de Comisionados Electorales determinará la fecha y lugar para albergar el sorteo después de la fecha límite para retiros y objeciones.

El Proceso:

- El sorteo para la posición en la boleta será conducido por la Junta de Comisionados Electorales y comenzará con los candidatos para ambos Distritos y los puestos por acumulación, lo cual tomará lugar simultáneamente.
- Cada candidato tendrá la oportunidad de estar presente el día del sorteo o enviar un representante en su nombre.
- La información de cada candidato se colocará en una tarjeta y se anunciará en orden alfabético antes de colocarse en un receptáculo.
- La información del Candidato debe incluir la oficina para la cual ellos se están postulando. (Nombre, Consejo de la Ciudad o Distrito del Comité Escolar en el cual reside; y cualquier otra declaración presente en la nominación).
- La información que aparece en la tarjeta se mostrará en la boleta en el orden que se sortearon. El sorteo de la posición de la boleta es un foro público y se transmite en vivo en el Canal del Gobierno de la Ciudad de Worcester.

Día de Elección

- Los Centros de Votación abrirán 7A.M. hasta las 8 P.M. Durante el horario establecido **No** se permiten propagandas o campañas electorales, en un rango no menor a 150 pies del lugar de votación.
- La prohibición de campaña electoral incluye, entre otros, la circulación de cualquier petición, la solicitud de votos y la exhibición de carteles.
- Noche de Elecciones: se invita a los candidatos, los miembros de los medios de comunicación y al público en general; a observar desde el “Área de visualización pública”: la tabulación de votos después de las 8 P.M en el Municipio, Departamento de Elecciones Oficina #208. Los resultados también se transmiten en vivo en el sitio web de la ciudad y el canal del Gobierno local.

2020 Redistribución

2020 REDISTRIBUCIÓN DE LOS 5 DISTRITOS DEL CONSEJO MUNICIPAL

Cada 10 años, las 5 líneas de división distrital de la ciudad son rediseñadas por la Junta de Comisionados Electorales de Worcester. Este proceso ocurre después de cada censo federal para asegurarse que cada distrito de la ciudad esté compuesto aproximadamente por la misma cantidad de personas.

Es probable que los Candidatos noten calles y vecindarios adicionales en sus Distritos en las Elecciones 2023. Su Concejero Distrital actual continuará representando su Distrito hasta que el nuevo Consejo sea elegido y posicionado en Enero 2024. Para más información visite: www.worcesterma.gov/elections.

ELECCIÓN DE MIEMBROS DEL DISTRITO DEL COMITÉ ESCOLAR

El 1 de septiembre de 2022, el Capítulo 208 de las Leyes de 2022 aprobó la Ley que cambió la Carta Constitucional de la Ciudad de Worcester vigente para las Elecciones de 2023. El Comité Escolar será representado por **SEIS** escaños distritales y **DOS** escaños generales. Los **SEIS** Distritos serán etiquetados A, B, C, D, E y F, diferente a los 5 Distritos numerados del Municipio. Para más información visite: www.worcesterma.gov



The City of
WORCESTER

GUIDE TO RUNNING FOR OFFICE



Requirements to Hold Local Office

You must be a registered voter in Worcester.

Councilor At-Large: Any voter is eligible to hold the office of councilor at-large; if they shall have resided in the city for a period of at least one year.

District Councilor: A district councilor at the time of their election shall be a voter of the district from which they seek election and shall have resided therein for a period of at least one year.

School Committee At-Large: Any voter is eligible to hold the office of school committee member, provided, however, that they shall have resided within the city for one year immediately prior to the election.

District School Committee: A district school committee member at the time of their election shall be a voter of the district from which they are elected and shall have resided therein for a period of at least one year.

Request nomination papers from the offices of the Board of Election Commissioners, Room 208, City Hall.

Nomination Papers

Signature Requirements:

- District Councilor: 100
- District School Committee: 100
- Councilor At-Large or School Committee At-Large: 300

Signatures on Nomination Papers

Procedures: To be certified, all signatures on nomination papers must be legible and signed in person, with the address at which the voters are registered.

District Boundaries: Signatures that are not in the correct City Council or School Committee District cannot be counted.

Collect Extra Signatures: Candidates are encouraged to collect at least 20% more signatures than required.



IMPORTANT: All nomination papers must be submitted to the ELECTION COMMISSION for the certification of names on or before 5:00 P.M. **MAY 16, 2017**

City of Worcester
CITY PRELIMINARY ELECTION NOMINATION PAPER
STATEMENT OF CANDIDATE

I, _____, do hereby declare that I reside at _____ in the City of Worcester, that I am a voter therein qualified to vote for a candidate for the office of CITY COUNCILOR AT-LARGE for the term of TWO years, to be voted for at the preliminary election to be held on TUESDAY, the 12TH day of SEPTEMBER 2017, and I request that my name be printed as such candidate on the official ballot for use at said preliminary election and I further declare that at the time of the election I shall be a voter of the district from which I am elected and shall have resided therein for a period of at least one year.

(Signed) _____
COMMONWEALTH OF MASSACHUSETTS
Worcester, ss _____
Subscribed and sworn to on this _____ day of _____ before me _____
My Commission expires: _____

PETITION ACCOMPANYING STATEMENT OF CANDIDATE
(To be signed by at least 200 Voters qualified to vote for said office.)

WHEREAS _____ is a candidate for nomination for the office of CITY COUNCILOR AT-LARGE for the term of TWO years, we, the undersigned, voters of the City of WORCESTER, duly qualified to vote for a candidate for said office, do hereby request that the name of said _____ be printed on the official ballot for use at the preliminary election to be held on TUESDAY, SEPTEMBER 12TH, 2017. We further state that we believe him / her to be of good moral character and qualified to perform the duties of the office.

CITY COUNCILOR AT-LARGE

Campaign Finance

The law requires that campaign expenses and contributions be reported by candidates seeking election at every level of government.

City Council

- Campaign Financing is reviewed by OCPF.
- Nomination papers are going to include OCPF information.
- OCPF will be hosting an online training in May.
- OCPF Contact Info
 - Phone: (617) 979-8300
 - Website: www.ocpf.us

School Committee

- Campaign Financing is reviewed by Worcester Elections Commission.
- First Steps:
 - Hire campaign treasurer
 - Start a campaign bank account.
 - Fill out forms in Nomination Paper packet.
- Worcester Elections Commission:
 - Phone: (508) 799-1134
 - www.worcesterma.gov/elections

City Council Districts

[wp_all.pdf \(worcesterma.gov\)](#)

CITY COUNCIL DISTRICT 1

WARD: 1 & 2

CITY COUNCIL DISTRICT 2

WARD: 3 & 4

CITY COUNCIL DISTRICT 3

WARD: 5 & 6

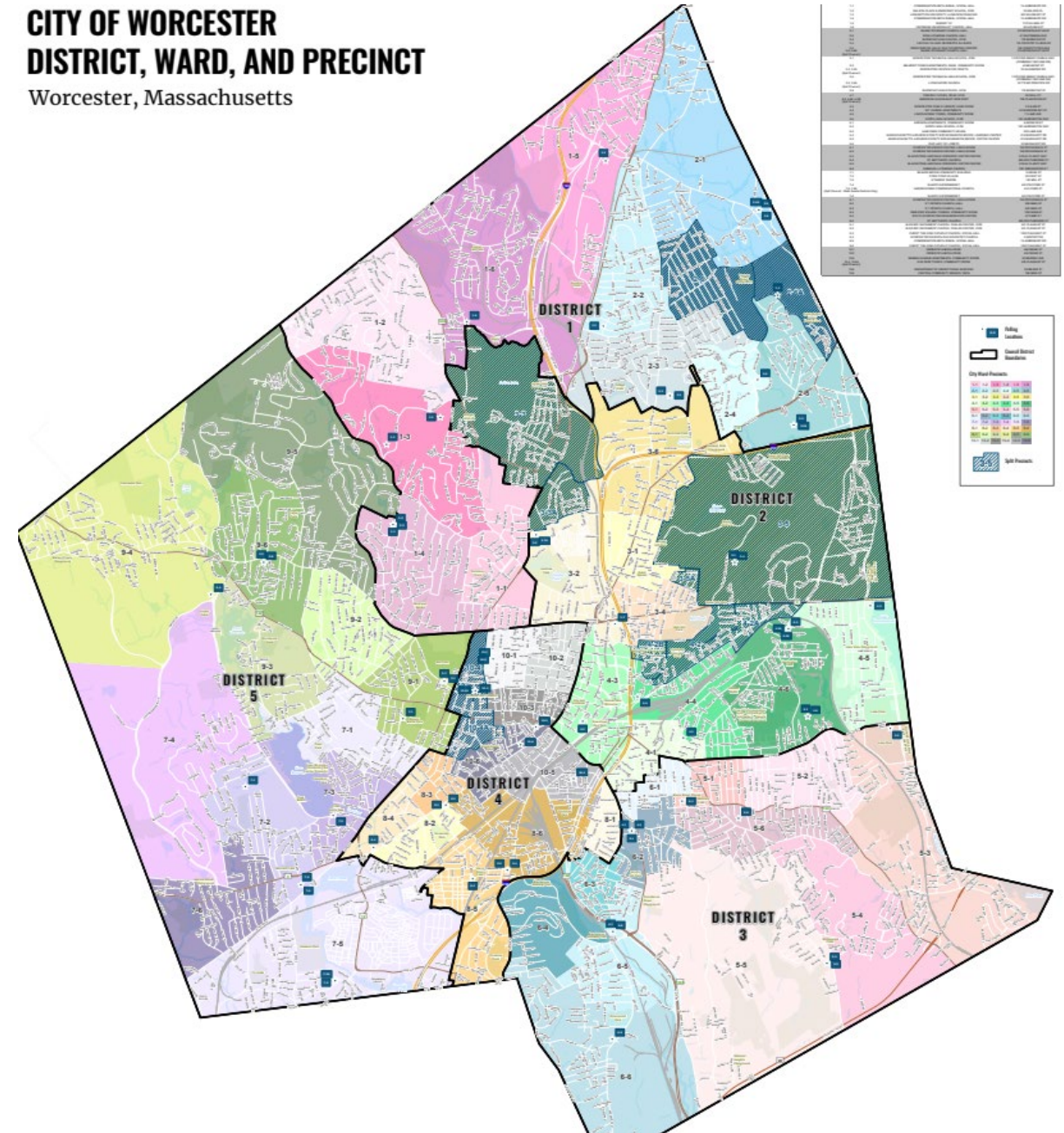
CITY COUNCIL DISTRICT 4

WARD: 8 & 10

CITY COUNCIL DISTRICT 5

WARD: 7 & 9

CITY OF WORCESTER DISTRICT, WARD, AND PRECINCT Worcester, Massachusetts



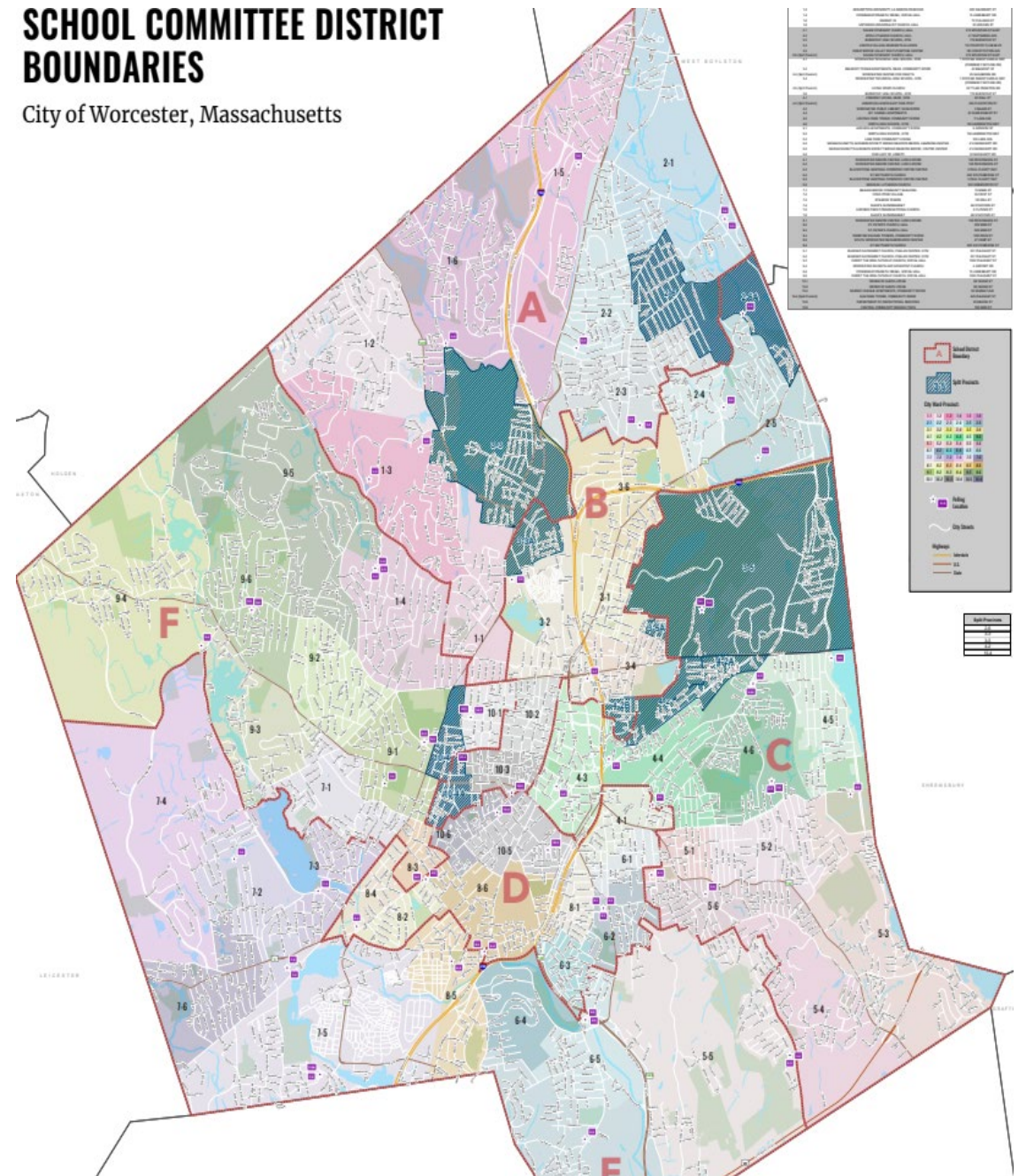
School Committee Districts

1. THERE ARE 6 SCHOOL COMMITTEE DISTRICTS **A - F**
2. TWO AT-LARGE SCHOOL COMMITTEE MEMBERS

[2022-school-districts-map.pdf \(worcesterma.gov\)](#)

SCHOOL COMMITTEE DISTRICT BOUNDARIES

City of Worcester, Massachusetts






Where Do I Vote?

[Where Do I Vote? | City of Worcester, MA \(worcesterma.gov\)](#)

VOTER DETAILS

The following results are from the Commonwealth of Massachusetts Central Voter Registry. If you have any further questions, please contact the Election Commission office at 508-799-1133 or email elections@worcesterma.gov.

Name	[REDACTED]
Address	[REDACTED]
District	City Council: 2 School Committee: B
Ward - Precinct	3 - 5A  Ward/Precinct & Poll Location Map
Voter Status	Active
Party	  What Does It Mean?
Next Election	September 5, 2023 (Preliminary Election)
Polling Location	LIVING WORD CHURCH OF WORCESTER, GREAT HALL 30 TYLER PRENTICE ROAD

School Committee	Ward	Precinct
A	01	01
A	01	02
A	01	03
A	01	05
A	01	06
A	02	01
A	02	02
A	02	03
A	02	06
A	03	03

School Committee	Ward	Precinct
B	02	04
B	02	05
B	02	06A
B	03	01
B	03	02
B	03	03A
B	03	04
B	03	05A
B	03	06
B	04	02B
B	10	02
B	10	03
B	10	04A

School Committee	Ward	Precinct	
C	03	05	
C	04	02	
C	04	02A	STATE ELECTION SPLIT
C	04	03	
C	04	04	
C	04	05	
C	04	06	
C	05	01	
C	05	02	
C	05	03	
C	05	04	
C	05	06	

School Committee	Ward	Precinct
D	04	01
D	06	01
D	06	02
D	06	03
D	08	01
D	08	02
D	08	04
D	08	06
D	10	05
D	10	06

School Committee	Ward	Precinct	
E	05	05	
E	06	04	
E	06	05	
E	06	06	
E	07	02	
E	07	03	
E	07	04	
E	07	05	
E	07	05A	STATE ELECTION SPLIT
E	07	06	
E	08	05	

School Committee	Ward	Precinct
F	01	04
F	07	01
F	08	03
F	09	01
F	09	02
F	09	03
F	09	04
F	09	05
F	09	06
F	10	01
F	10	04

2025 MUNICIPAL ELECTION CALENDAR

- Tuesday, March 4th, 8:45am** **First day & hour to access nomination papers @ the offices of the Board of Election Commissioners, Room 208, City Hall.**
- Tuesday, May 6th, 5:00 pm** **Last day & hour for submitting nomination papers to the Board of Election Commissioners for certification of signatures.**
- Thursday, May 15th, 5:00 pm** **Last day & hour to file a withdrawal or objections to nomination of candidates with the Board of Election Commissioners.**
- Saturday, August 23rd** **Last day & hour to register to vote in the Preliminary Election. Office Hours 8 AM – 5 PM**
- Tuesday, Sept. 2nd** **Preliminary Election, Polls are open 7:00 am to 8:00 pm. (if necessary, Worcester Charter Section 7-4f)**
- Tuesday, Sept. 9th** **Last day & hour to decline nomination for election to Mayor, Council, or School Committee and for submitting non-binding public opinion advisory questions for certification of signatures.**
- Saturday, October 25th** **Last day & hour to register to vote in the Municipal Election. Office Hours 8 AM – 5 PM**
- Tuesday, Nov. 4th** **Municipal Election, Polls are open 7:00 am to 8:00 pm.**



Voter Registration Information

YOU MAY REGISTER TO VOTE IN MASSACHUSETTS IF:

- You are a citizen of the United States; and
- You will be at least 18 years of age on or before the next election; and
- You are a resident of Massachusetts; and
- You are not currently incarcerated by reason of a felony conviction.
- If you meet the above requirements, you may register to vote online, by mail, or in-person.
www.registertovotema.com





Absentee / Early Voting

I can't get to the polls on Election Day. Can I still vote?

Yes!

You may vote by:

- Absentee Ballot
- Early voting by mail
- Early voting in person

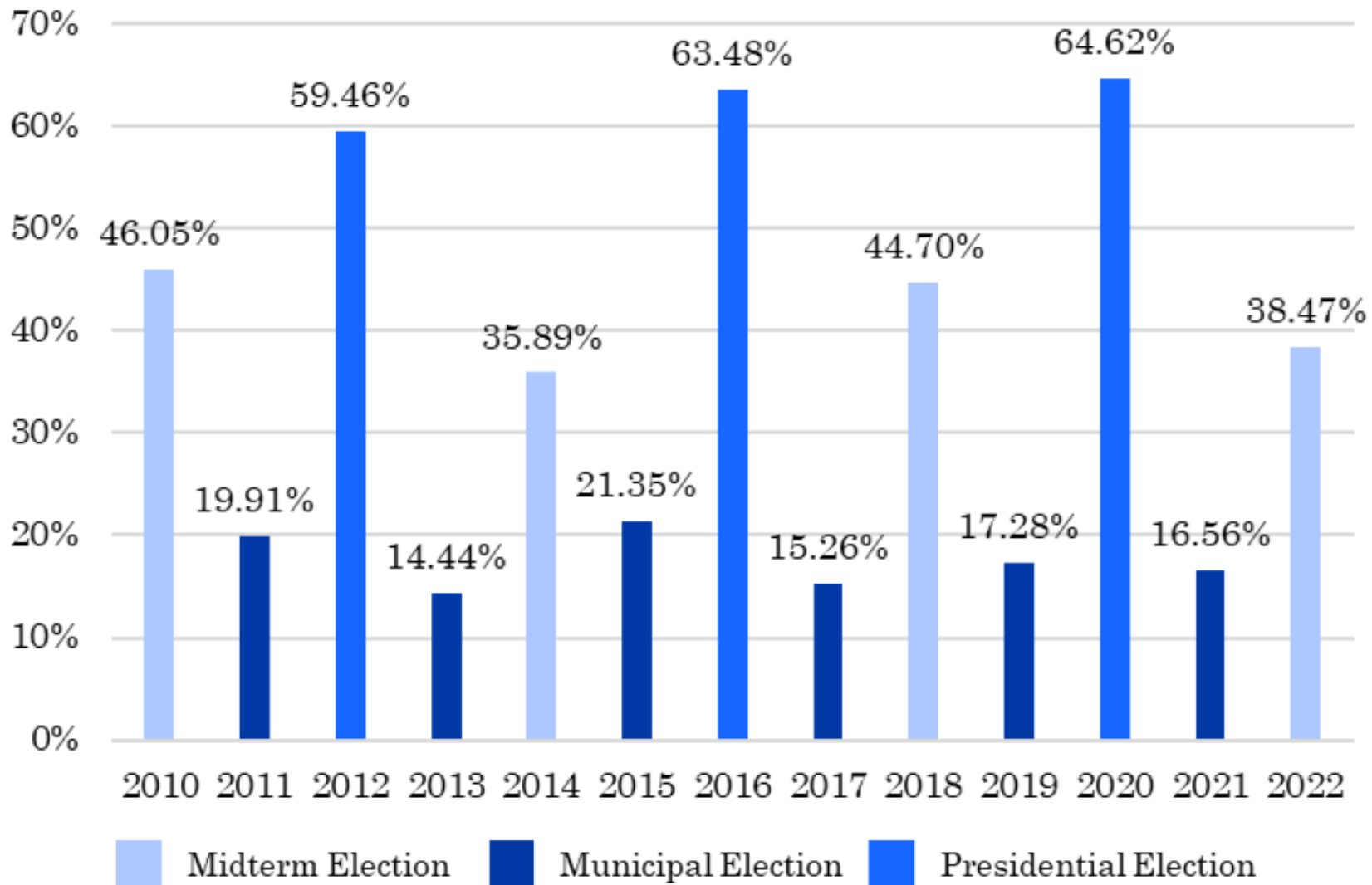


Register to Become a Poll Worker!



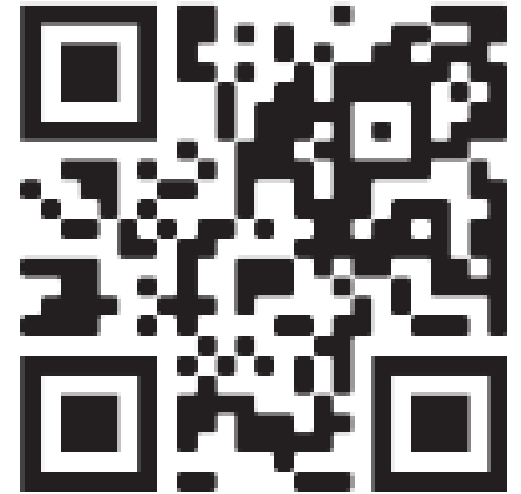
- The Election Commission is looking for a new generation of Poll Workers.
- If you are interested and would like to learn more about how to serve your community in this exciting election season, please fill out an application on our website and the Election Commission will be in contact with you soon.

Turnout Percentage in November Elections Since 2010



Your Vote Counts!

To learn more about the **Municipal Election, Early Voting, Vote By Mail** and **your polling location**, please visit www.worcesterma.gov/elections.



Questions or Comments?

WORCESTER CITY CLERK

Phone: 508-799-1134

Email: elections@worcesterma.gov

City Hall, Room 208

www.worcesterma.gov/elections

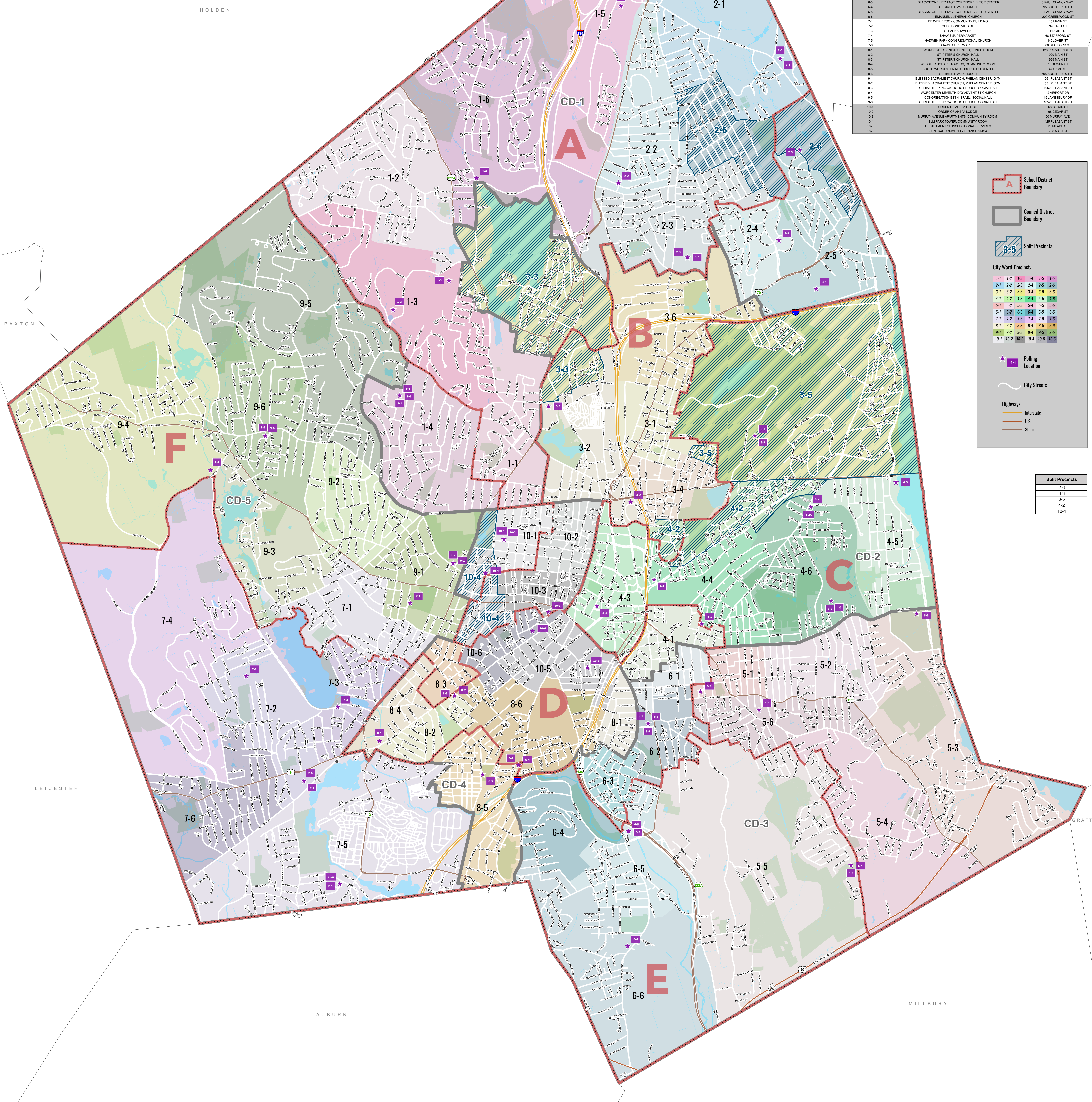


The City of

WORCESTER

SCHOOL COMMITTEE DISTRICT AND COUNCIL DISTRICT BOUNDARIES

City of Worcester, Massachusetts



WARD/PRECINCT	EDUCATION	ADDRESS
1-1	CONGREGATION BETH ISRAEL, SOCIAL HALL	15 JAMESBURY DR
1-2	NELSON PLACE ELEMENTARY SCHOOL, GYM	35 NELSON PL
1-3	ASSUMPTION UNIVERSITY, LA MANSION FRANCHISE	50 WALKER ST
1-4	CONGREGATION BETH ISRAEL, SOCIAL HALL	15 JAMESBURY DR
1-5	MARKET ST	72 PULLMAN ST
1-6	UNITARIAN UNIVERSALIST CHURCH, HALL	80 HOLMES DR
2-1	SALIM COVENANT CHURCH, HALL	215 MOUNTAIN ST EAST
2-2	ZION LUTHERAN CHURCH, HALL	41 WATERMAN AVE
2-3	BURNCOAT HIGH SCHOOL, GYM	179 BURNCOAT ST
2-4	LINCOLN VILLAGE RESIDENTS ALLIANCE	118 COUNTRY CLUB BLVD
2-5	GREAT BROOK VALLEY MULTIPURPOSE CENTER	180 CONSTITUTION AVE
2-6	SALIM COVENANT CHURCH, HALL	215 MOUNTAIN ST EAST
3-1	WORCESTER TECHNICAL HIGH SCHOOL, GYM	1 OFFICER MANNY FARMLA WAY (FORMERLY 506 LEXINGTON ST)
3-2	BELMONT TOWER APARTMENTS, REAR, COMMUNITY ROOM	45 BELMONT DR
3-3	WORCESTER CENTER FOR CRAFTS	25 SAGAMORE RD
3-4	WORCESTER TECHNICAL HIGH SCHOOL, GYM	1 OFFICER MANNY FARMLA WAY (FORMERLY SYDNEY DR)
3-5	LIVING WORD CHURCH	30 TYLER PRACTICE RD
3-6	BURNCOAT HIGH SCHOOL, GYM	179 BURNCOAT ST
4-1	FRENCH FUSION, BEAR, GYM	30 HULL ST
4-2	AMERICAN LEGION EAST SIDE POST	338 PLANTATION ST
4-3	WORCESTER PUBLIC LIBRARY, SAVE ROOM	3 SACKER ST
4-4	MT. CARMEL APARTMENTS	50 BREWSTERY ST
4-5	LINCOLN PARK TOWER, COMMUNITY ROOM	11 LAKE AVE
4-6	NORTH HIGH SCHOOL, GYM	100 HARRINGTON WAY
5-1	ADORSION APARTMENTS, COMMUNITY ROOM	100 HARRINGTON WAY
5-2	NORTH HIGH SCHOOL, GYM	100 HARRINGTON WAY
5-3	LAKE PARK COMMUNITY HOUSE	300 LAKE AVE
5-4	MASSACHUSETTS ALBION SOCIETY BROAD MEADOW BROOK, LEARNING CENTER	41 BRASSAULT RD
5-5	MASSACHUSETTS ALBION SOCIETY BROAD MEADOW BROOK, VISITOR CENTER	414 MASSAUGHT RD
5-6	OUR LADY OF LORETO	33 MASSAUGHT RD
6-1	WORCESTER SENIOR CENTER, LUNCH ROOM	128 PROVIDENCE ST
6-2	WORCESTER SENIOR CENTER, LUNCH ROOM	128 PROVIDENCE ST
6-3	BLACKSTONE HERITAGE CONCORD VISITOR CENTER	3 RAIL GLANCY WAY
6-4	ST MATTHEW'S CHURCH	695 SOUTHBROOK ST
6-5	BLACKSTONE HERITAGE CONCORD VISITOR CENTER	3 RAIL GLANCY WAY
6-6	EMANUEL LUTHERAN CHURCH	208 GREENWOOD ST
7-1	BEAVER BROOK COMMUNITY BUILDING	15 MANN ST
7-2	COES POND VILLAGE	39 FIRST ST
7-3	STEARNS TOWN	140 HILL ST
7-4	SHAW'S SUPERMARKET	68 SPENCER ST
7-5	HADWEN PARK CONGREGATIONAL CHURCH	6 CLOVER ST
7-6	SHAW'S SUPERMARKET	65 SPENCER ST
8-1	WORCESTER SENIOR CENTER, LUNCH ROOM	128 PROVIDENCE ST
8-2	ST PETER'S CHURCH, HALL	809 MAIN ST
8-3	WEBSTER SQUARE TOWERS, COMMUNITY ROOM	100 MAIN ST
8-4	SOUTH WORCESTER NEIGHBORHOOD CENTER	47 CAMP ST
8-5	ST MATTHEW'S CHURCH	695 SOUTHBROOK ST
8-6	BLESSED SACRAMENT CHURCH, PHELAN CENTER, GYM	55 PLEASANT ST
8-7	CHRIST THE KING CATHOLIC CHURCH, SOCIAL HALL	105 PLEASANT ST
8-8	WORCESTER BETHLEHEM ADVENTIST CHURCH	2 ANFORD DR
8-9	CONGREGATION BETH ISRAEL, SOCIAL HALL	15 JAMESBURY DR
8-10	CHRIST THE KING CATHOLIC CHURCH, SOCIAL HALL	105 PLEASANT ST
9-1	ORDER OF AHERN LODGE	68 CEDAR ST
9-2	ORDER OF AHERN LODGE	68 CEDAR ST
9-3	MURRAY AVENUE APARTMENTS, COMMUNITY ROOM	60 MARWAY AVE
9-4	ELM PARK TOWER, COMMUNITY ROOM	425 PLEASANT ST
9-5	DEPARTMENT OF INSPECTION, SERVICES	15 MADEIRA ST
9-6	CENTRAL COMMUNITY BRANCH YMCA	765 MARK ST

Legend

- School District Boundary (Red outline)
- Council District Boundary (Grey outline)
- Split Precincts (Blue hatched)

City Ward-Precinct:

1-1	1-2	1-3	1-4	1-5	1-6
2-1	2-2	2-3	2-4	2-5	2-6
3-1	3-2	3-3	3-4	3-5	3-6
4-1	4-2	4-3	4-4	4-5	4-6
5-1	5-2	5-3	5-4	5-5	5-6
6-1	6-2	6-3	6-4	6-5	6-6
7-1	7-2	7-3	7-4	7-5	7-6
8-1	8-2	8-3	8-4	8-5	8-6
9-1	9-2	9-3	9-4	9-5	9-6
10-1	10-2	10-3	10-4	10-5	10-6

Polling Location (Purple star icon)

City Streets (Thin grey line)

Highways

- Interstate (Thick orange line)
- U.S. (Thick yellow line)
- State (Thin red line)

Split Precincts

2-6
3-3
3-5
4-2
10-4

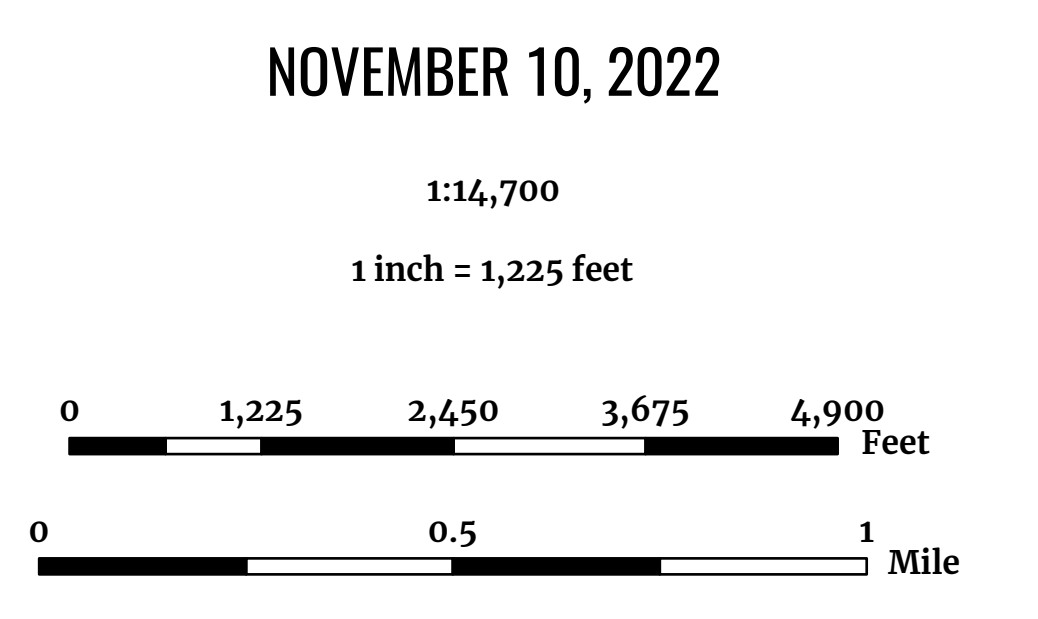


DATA SOURCES:
School Committee District Boundaries prepared by Nathaniel Persily, James B. McClatchy Professor of Law, Stanford Law School. These boundaries were approved by the Worcester Board of Election Commissioners on July 27, 2022.

All Other Data: City of Worcester Geographic Information System
Original Data - Digitized at 1:480 scale (Data true resolution: 1 inch = 40 feet).
Updated Using Spring 2003 Aerial Photography at 1:1,200 scale (1 inch = 100 feet).
Further Updates Using City of Worcester Information.

The ward and precinct boundaries depicted on this map were adopted by the Board of Election Commissioners October 14, 2021 and were approved by the Local Election Districts Review Committee October 27, 2021. These boundaries became effective December 31, 2021.

COORDINATE SYSTEM:
All map data is in the Massachusetts State Plane Coordinate system, North American Datum of 1983, Massachusetts Mainland Zone (4151). Units are measured in Feet.



**Produced by the City of Worcester
Technical Services Department
Geographic Information Systems Division
Worcester, Massachusetts**

Considerable effort has been made to ensure the accuracy, correctness and timeliness of data presented; however, this information is only as accurate as its sources and may not reflect the most current information. The City of Worcester assumes no liability for any errors, omissions or inaccuracies and makes no warranty, representation or guaranty of any kind, express or implied, as to the content or for any decisions made or actions taken or not taken by the user based upon any information provided on this map.

