

Reference Map - Wetlands Protection Ordinance

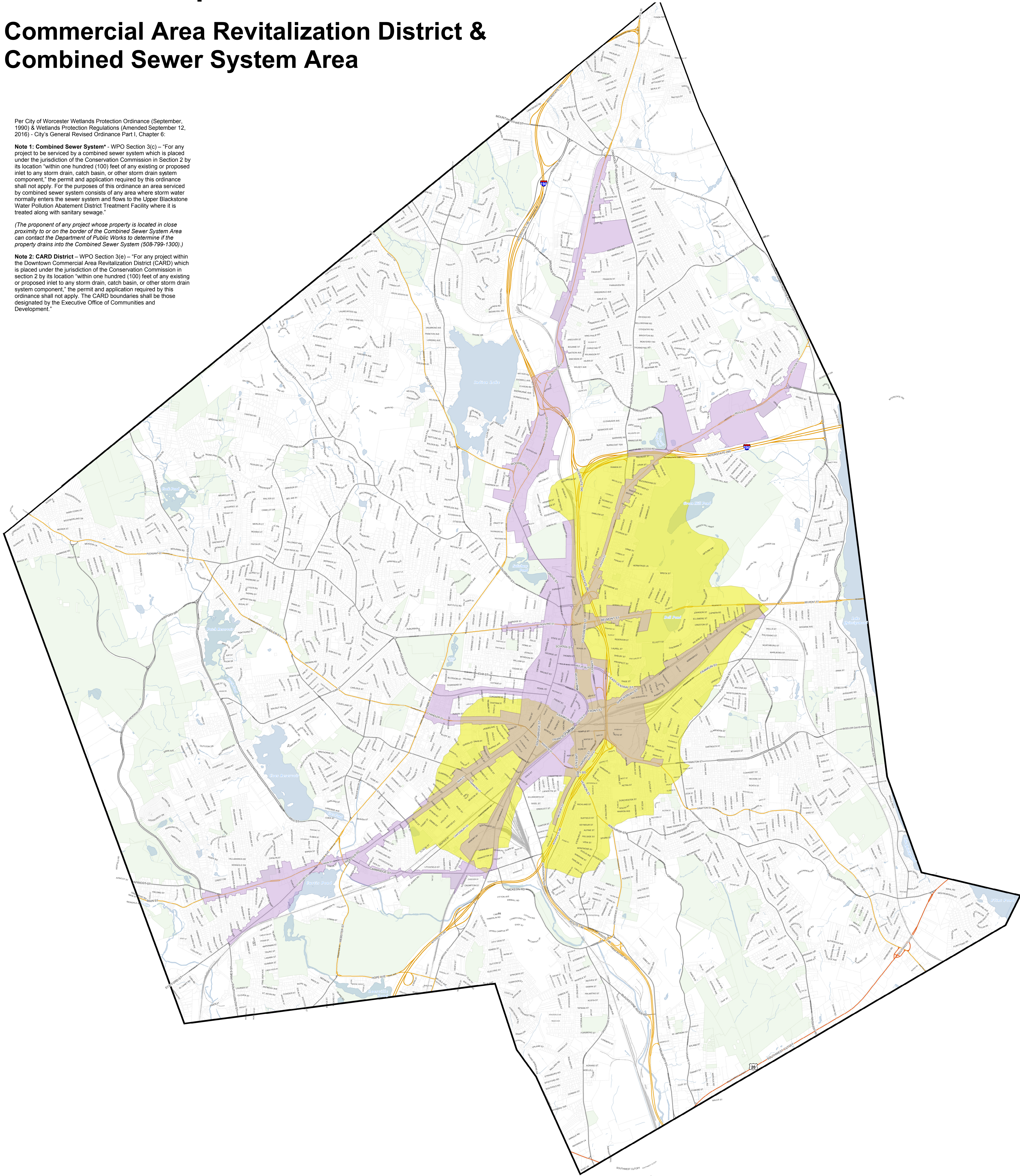
Commercial Area Revitalization District & Combined Sewer System Area

Per City of Worcester Wetlands Protection Ordinance (September, 1990) & Wetlands Protection Regulations (Amended September 12, 2016) - City's General Revised Ordinance Part I, Chapter 6:

Note 1: Combined Sewer System - WPO Section 3(c) - "For any project to be serviced by a combined sewer system which is placed under the jurisdiction of the Conservation Commission in Section 2 by its location "within one hundred (100) feet of any existing or proposed inlet to any storm drain, catch basin, or other storm drain system component," the permit and application required by this ordinance shall not apply. For the purposes of this ordinance an area serviced by combined sewer system consists of any area where storm water normally enters the sewer system and flows to the Upper Blackstone Water Pollution Abatement District Treatment Facility where it is treated along with sanitary sewage."

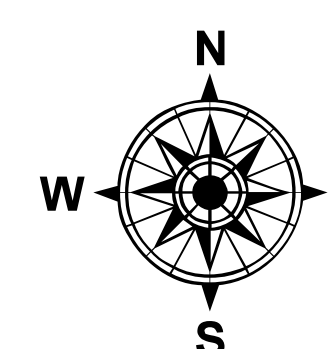
(The proponent of any project whose property is located in close proximity to or on the border of the Combined Sewer System Area can contact the Department of Public Works to determine if the property drains into the Combined Sewer System (508-799-1300).)

Note 2: CARD District - WPO Section 3(e) - "For any project within the Downtown Commercial Area Revitalization District (CARD) which is placed under the jurisdiction of the Conservation Commission in section 2 by its location "within one hundred (100) feet of any existing or proposed inlet to any storm drain, catch basin, or other storm drain system component," the permit and application required by this ordinance shall not apply. The CARD boundaries shall be those designated by the Executive Office of Communities and Development."



 Combined Sewer System Area (see Note 1)

 Commercial Area Revitalization District (see Note 2)



September 19, 2016

1:14,400

1 inch = 1,200 feet

0 0.125 0.25 0.5 0.75 Miles

Produced by City of Worcester
Executive Office of Economic Development
Division of Planning & Regulatory Services

DATA SOURCES:
All data: City of Worcester Geographic Information System
Original Data: Digitized at 1:480 scale (Digital resolution: 1 pixel = 40 feet)
Updated Using Spring 2003 Aerial Photography at 1:1,200 scale (1 inch = 100 feet)
Further Updates Using City of Worcester Information

COORDINATE SYSTEM:
All map data is in the Massachusetts State Plane Coordinate system,
North American Datum of 1983, Massachusetts Meridian Zone (4151).
Units are measured in Feet.

