

Commission on Disability Meeting

Minutes from Tuesday December 18, 2012

Worcester City Hall, Levi Lincoln Room, 3rd flr

4:15 PM

Members present: Rachel Shannon Brown, Herbert Cremer, Charles Hiamah, Deborah Malone, Javier Pena, Pauline Piso and Stephen Stolberg

Members absent: Lynne Towler

Staff: Jayna Turchek, Director of Human Rights & Disabilities and Dawn E. Clark, Disability Intake Coordinator

Guests: Robert C. Antonelli, Jr., Assistant Commissioner of Parks and Caesar Valiente, Clerk of Work for the Parks Department

Members of the Public: Jacqueline Norton, Terry Kelly, L. Kelly, Michael Kennedy, Jo Hart and Scott Ricker

1. Call to Order: The meeting began with a call to order and welcome from the Chairperson. There were around the room introductions. At this point in the meeting there was not a quorum so the Chairperson lifted Associate member Javier Pena to full membership for the purpose of a quorum for the meeting.

2. Public Comment Period The Chairperson explained the public comment period guidelines asking that comments reflect needs of the disabled. Opportunity was given to members of the public to reserve time later in the meeting to express concerns on a particular item on the agenda. No public comment at this time.

3. Minutes: Mr. Stolberg arrived. Motion was made to accept the minutes by Ms. Piso seconded by Ms. Malone. There were 3 yes votes and 3 abstentions. Mr. Cremer questioned if there was an affirmative voted due to the number of abstentions. Approval of the minutes was tabled.

4. Department of Parks – Master Plan Review: Robert C. Antonelli, Jr., Assistant Commissioner of Parks and Caesar Valiente, Clerk of Work made the following presentation of master plans of site improvements for eight of the fifty plus facilities under the Parks Department.

a. Logan Field

The current work plan for Logan Field includes a new softball field, a walking path around the facility, bleachers and dug-outs. In the future there are plans for a playground and batting cage. It is expected to be open next year. Details such as electrical are being completed now.

The following are answers to questions from Commission members:

The walking path material will be concrete and asphalt.

Yes there will be space between pathways and bleachers for people to sit comfortably. The bottom bleacher is at bench height. The Parks Dept will take under advisement that it would be good to have something on the bottom bench for people to grab to assist them in pulling themselves up from a sitting position as well as a back support.

The following are answers to questions from members of the public:

There is no reserved seating in bleachers. There is a containment seating for people who use a chair or other device. A suggestion to put the universal handicapped symbol on or near the bleacher was noted. The department has never been made aware that bleacher seating was an issue.

The City of Worcester's standard policy is as renovations etc. are being made in the facilities, they will be made accessible and accessibility requirements will be met. The concession stand will be put on a list for needed access upgrade. The Chairperson asked Ms. Turcek to look into what the process was to determine if the cost of the current renovation triggered the state building code for making the concession stand and entire facility accessible at this time.

b. Greenwood Park

This is a master plan with process completed and developed in conjunction with Quinsigamond Community Village. The splash pad is already completed. A HP parking spot near the splash pad is over near Forsberg Street. This was done because of the hilly terrain. Future plans include upgrade to the playground making it more accessible and enjoyable. There will be an accessible walkway that will go from Forsberg Street along Victoria Avenue up to the athletic Fields as well as a pathway over to the basketball field and tennis courts.

The master plan also includes renovating the basketball court in the center of the park and adding a tennis court, expanding the play area, and renovating and upgrading two vacant buildings to make them accessible, one of which is a

restroom, the other a storage facility. Redesign the parking lot for easier use with a round about and a new accessible loop walk making it easier to get to the various park amenities including a new softball/soccer field and two smaller soccer fields. A wood gate will be installed to discourage vandalism. Parking will be provided along the entrance drive where appropriate and to refurbish some of the walking trails. The aim is to complete the current phase this coming summer.

Phase one includes the playground upgrade, the two tennis courts on Victoria Avenue, the walkway that goes up to new basket ball and tennis court. The Quinsigamond Village neighborhood had allotted the city about \$750,000. The city is looking to match with \$250,000 already and in next years capital budget an additional \$500,000 is to be allotted for approximately a \$1,230,000 project.

The following are answers to questions from Commission members:

There are plans to install cameras in all the parks. Some parks are easier than others to accomplish this. Right now the dept. is currently testing a system in Greenhill Park with 10 cameras at both entrances, parking lots, and the Vietnam Memorial. These are where vandalism has occurred in the past. As renovations are being made conduits and other necessary work is being done to be able to provide security system for the parks.

Handicapped parking has been dispersed throughout the park so those spaces are close to activities. There can be signage placed at the roundabout directing to handicapped parking. They may change the parking lot HP spaces closer to the activities, but in general that is where they will be.

There will be some parking along the entrance way as the topography will allow.

The following are answers to questions from members of the public:

The loop will be made of some type of hard surface possibly asphalt; the trails will be woodchip or trail surface. Speaker suggested that stone dust might be a better choice to woodchip. The ground surface for future projects is poured rubber. This makes sense for maintenance as well as access.

The Parks Department will create the planned accessible playground upgrade by removing the existing structure, taking out the ground material and replace with poured rubber, and add play equipment. With the poured rubber, there is an effort to minimize the raking of material to the splash pad.

The Parks Dept. is looking to move HP spaces toward the main area of use. There are five HP spaces, four in the lot and one by the spray pack.

c. Knights of Columbus Park

Site improvements call for a rectangular field to be used for many different games, a play area, basketball court, paved parking lot, a building for storage and an access drive and path. The drive will be gated to discourage use as an illegal dumping site, however, will be available for pedestrians.

The following are answers to questions from Commission members:

The swing is rated for accessible use.

The surface under the table is planned to be a hard scrape/concrete pad surface.

The following are answers to questions from members of the public:

Regarding an accessible path from Greenwood, the grade would be a concern. Also would need crosswalks to cross safely due to traffic and parking issues. They consulted the traffic division to identify crosswalks and routes, will look at this again. Will also review again especially since Victoria Avenue is a new area, will make a note and talk with engineering regarding lights and crosswalk from parking.

When a basketball court becomes a reality, will review possibility of HP spot near court.

d. Duffy Field

The existing playground will be removed and a new play area will be located closer to Newton Avenue with new asphalt sidewalk, ramp and crosswalk across Newton Avenue. Building loop path to navigate in and around.

The playground has a transfer station planned and according to the manufacturer it is an accessible design and route.

e. Coes Knife

The plan includes route to Columbus Park. Recently completed storm dam access from bridge and parking lot with poured asphalt product on walkway. The bridge is a standard prefab bridge places on abutments to the dam, yes has steel rails.

There will be benches in a future phase.

The following are answers to questions from members of the public:

The Division of Public Health has helped mitigate population of geese by helping with the geese eggs and contracting with a dog company.

f. City Hall Common

This plan includes the upgrading of the plaza in front of City Hall and on the Franklin and Front Street sides of City Hall with ramped access at ends of building. The style will be the same as the City Hall back Common. Benches and lights will be upgraded as well. The Franklin Street bus shelter will be upgraded.

g. East Park

A new spray park facility is planned which will include a pavilion. Additionally there will be restrooms, female, male and family changing rooms and comfort/first aid station. The playground is completed. Parking lot improvements complete with HP spots and renovations to pathways. In the future it is possible that the oval could be converted to an ice skating rink.

The following are answers to questions from Commission members and the public:

There is no pool planned at this time.

The use of wood chips is taken under advisement.

No turnstile system will be used at the gate.

HP spaces are provided.

h. Green Hill Park Farm

Plan include the upgrade of the barn with more exhibit space, repair to damaged sheep exhibit area and the water retention circulation around the clay pods and rebuilding the pig's exhibit. The community garden is to be moved, a new back house for maintenance will be built and a walkway around the farm area will be created.

The following are answers to questions from Commission members and the public:

Lighting will be upgraded around building for night use.

The new curbstones will be leveled off to get on/off of pathway.

Benches will be provided.

Mr. Cremer suggested charging a fee in the future (lower fee for city residents). He also suggested looking into providing therapeutic pony rides for children with disabilities.

5. January Parks Open Space Public Meeting

The Commission agreed to host a Parks Open Space & Recreation Plan public meeting on January 15, 2013. Parks are a large part of the city's facilities and services open to the public. The new Open Space & Recreation Plan will update Worcester's ADA Transitional Plan and it is important to have input from the disability community. There have been five public district meetings to hear public comment this fall on this matter and more are planned.

6. Library Update

The Chairperson referred to the correspondence from Wei Jeng Chu, Head Librarian regarding the 2009 request of two additional HP parking spaces on Library Lane. Joseph F. Borbone, Director of Engineering, Worcester DPW&P indicated that a work order will be issued to have the work done hopefully in December.

7. Announcements and Adjournment

There being no other business, the meeting was adjourned at 6:45pm.

Respectfully Submitted,

Dawn Clark

City of Worcester

Department of Public Works and Parks Site Improvements Update

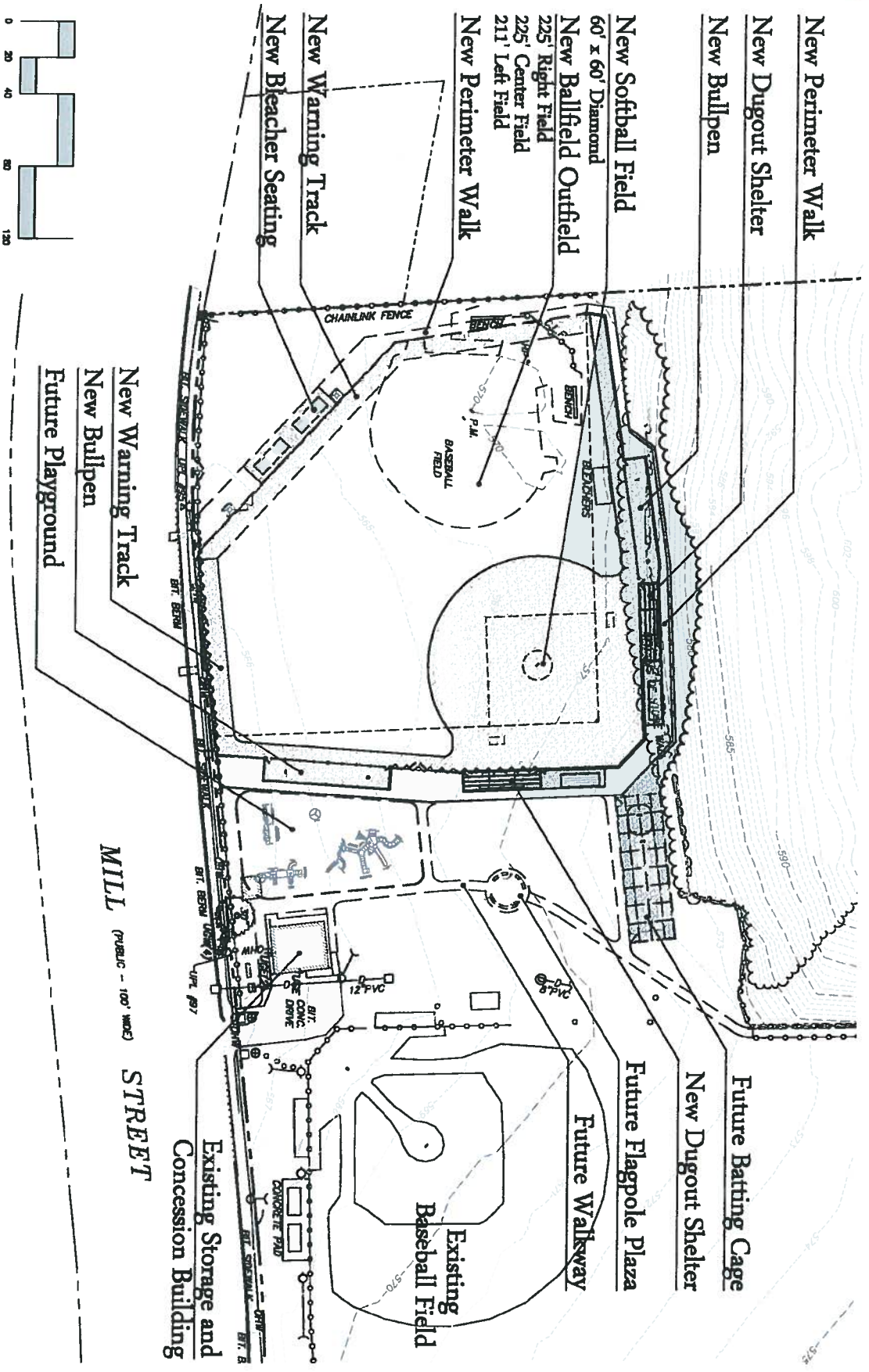
**Logan Field, Greenwood Park Master Plan, Former KOC
Parcel, Duffy Playground, Coes' Pond Parking Lot, Worcester
Common, East Park Spray, Green Hill Park Barnyard Zoo,**

Commission on Disability

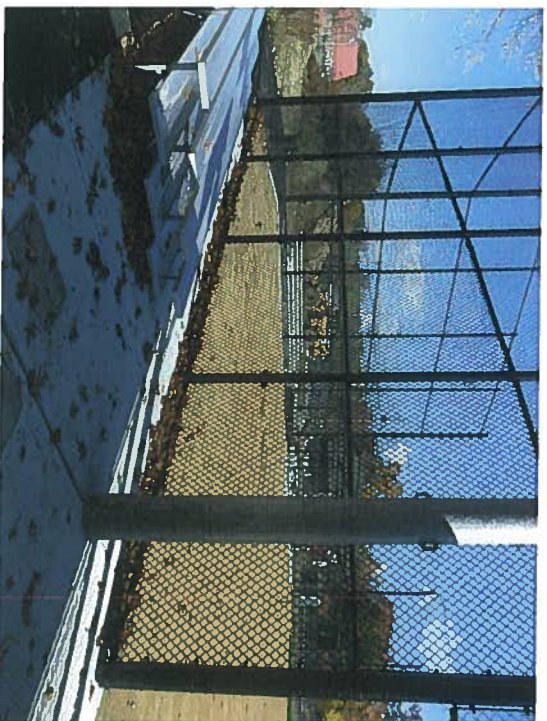
Worcester Public Library, Banx Room

October 30, 2012

Logan Field Illustrative Site Plan Softball Field Area



Logan Field Site Improvement Photos



Greenwood Park

Illustrative Master Plan



Former K.O.C. Parcel Site Improvements

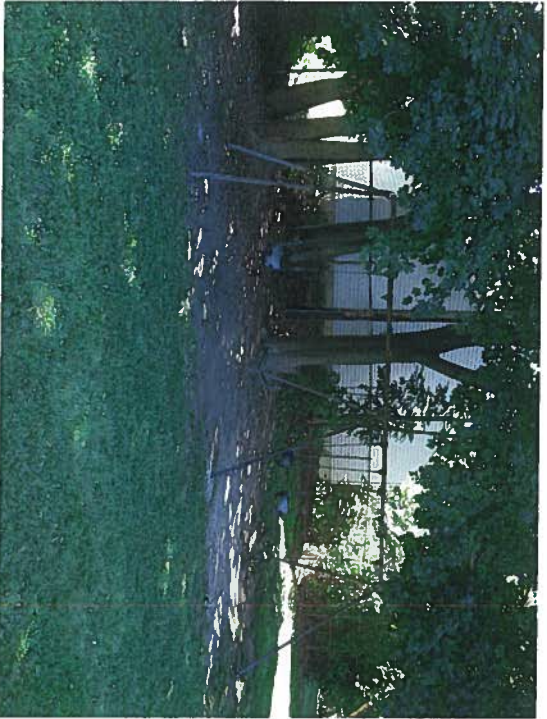
Illustrative Site Plan



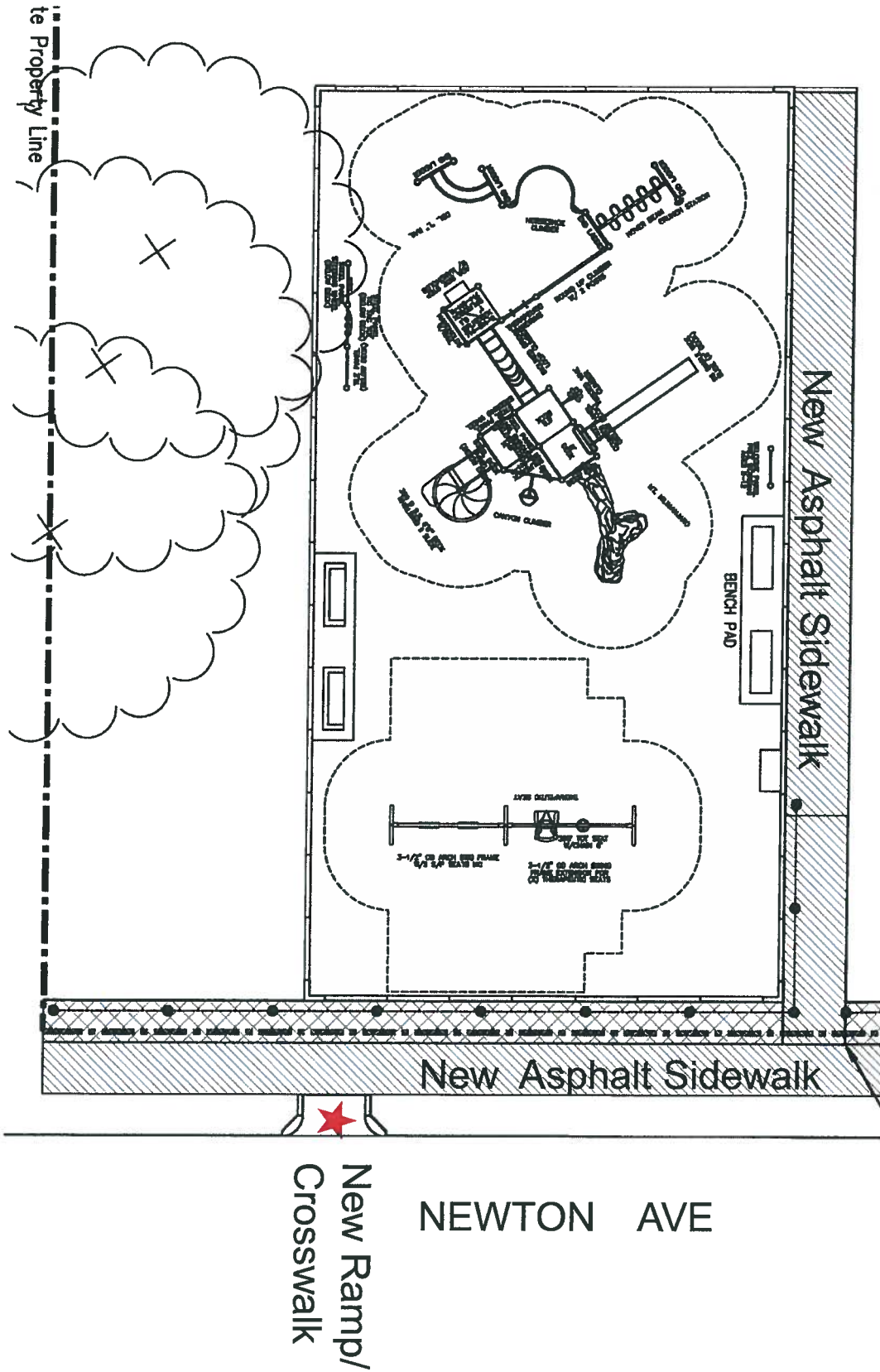
Duffy Playground Existing Conditions



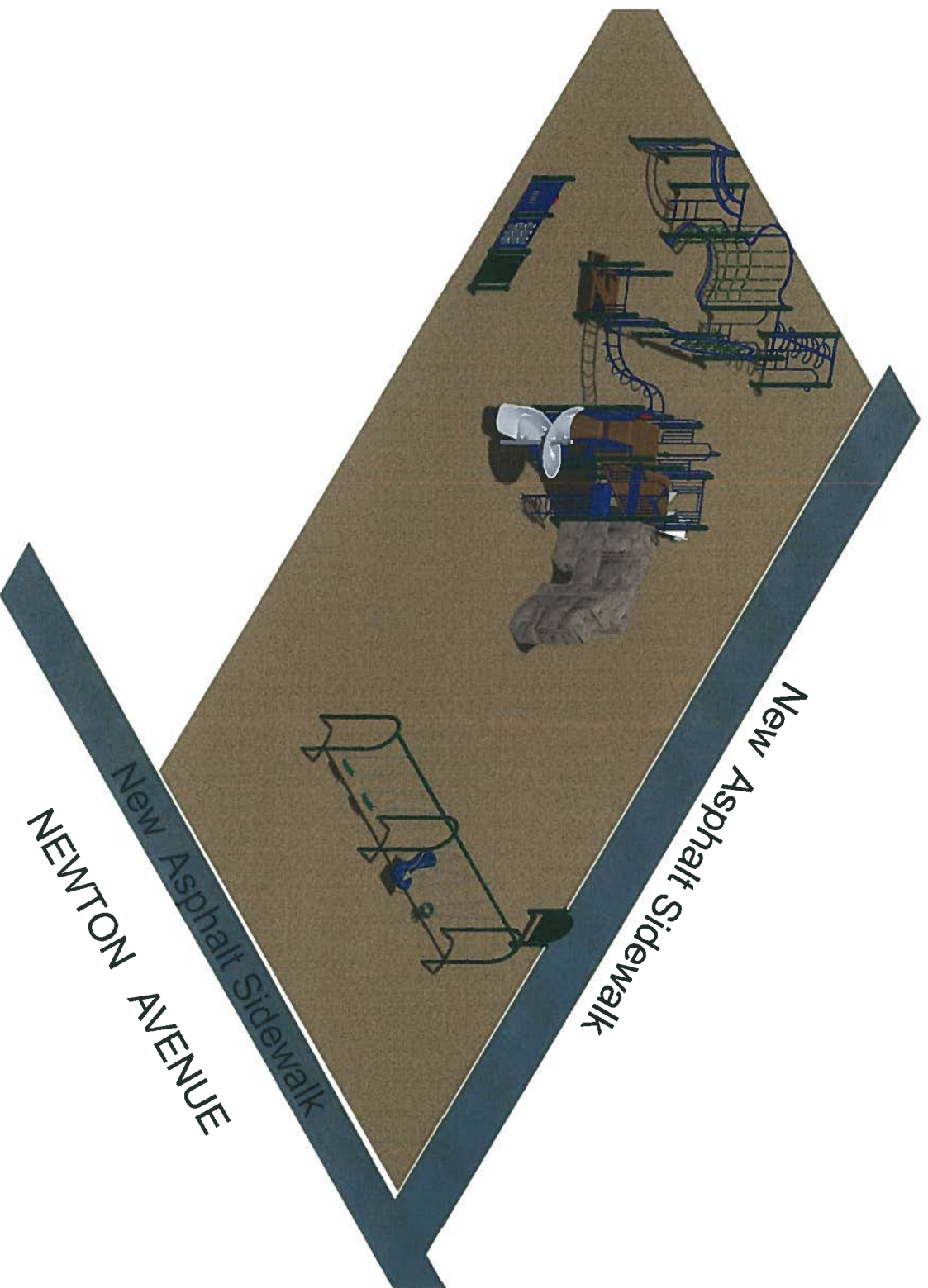
Duffy Playground Existing Conditions



Duffy Playground Proposed Site Improvements



Duffy Playground - Axonometric Site Plan



Coes Knife

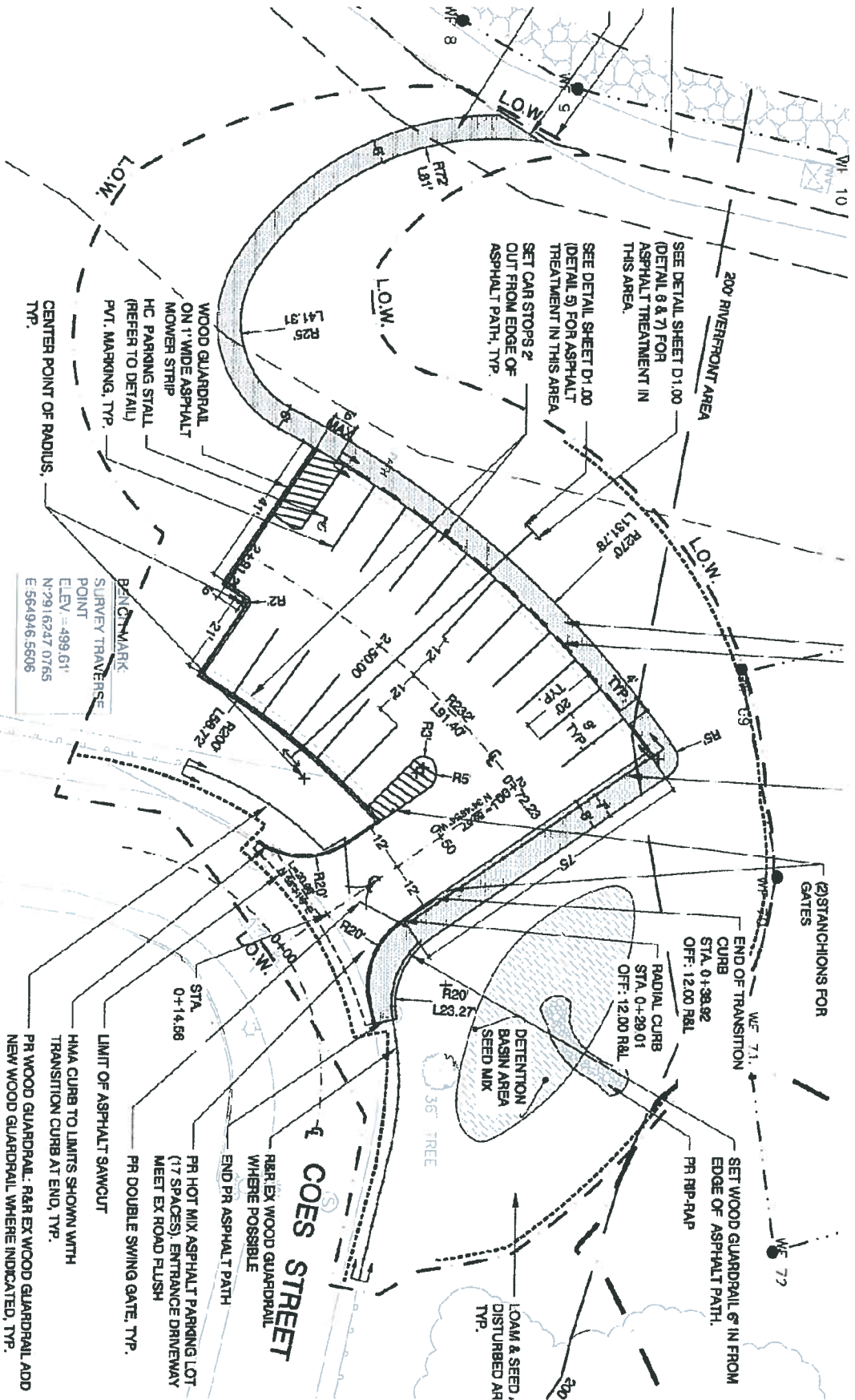
Lakeside Ave Pathway and Parking Lot



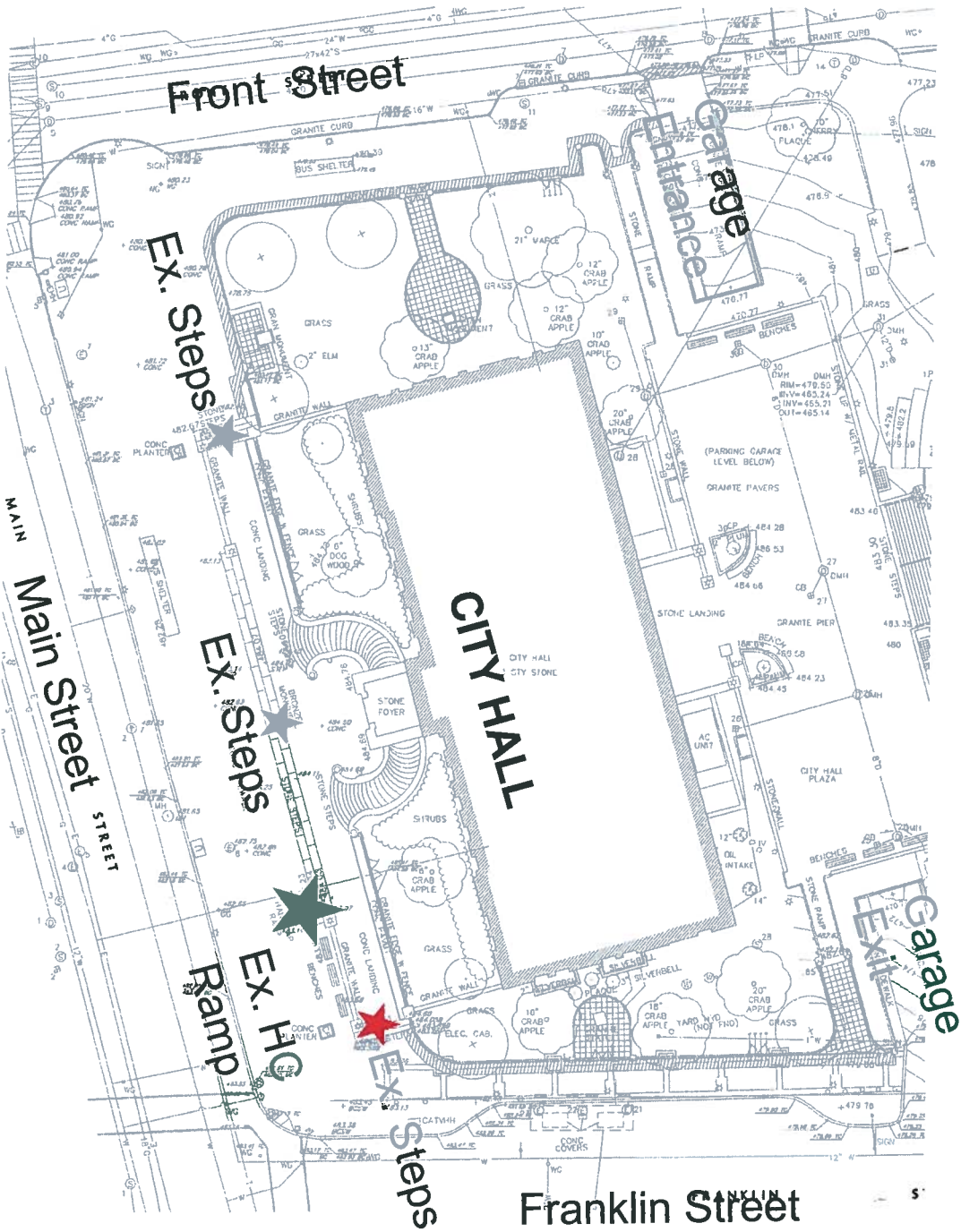
Coes Knife - Lakeside Ave Pathway Photos



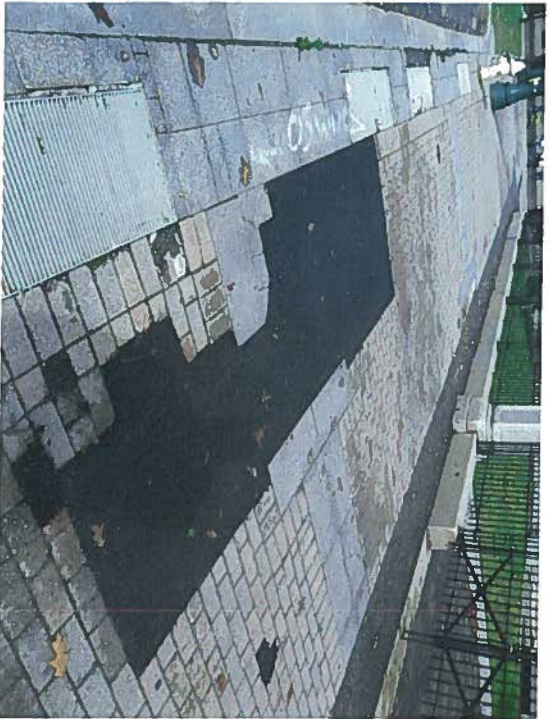
Coes Knife Proposed Parking Lot Site Plan



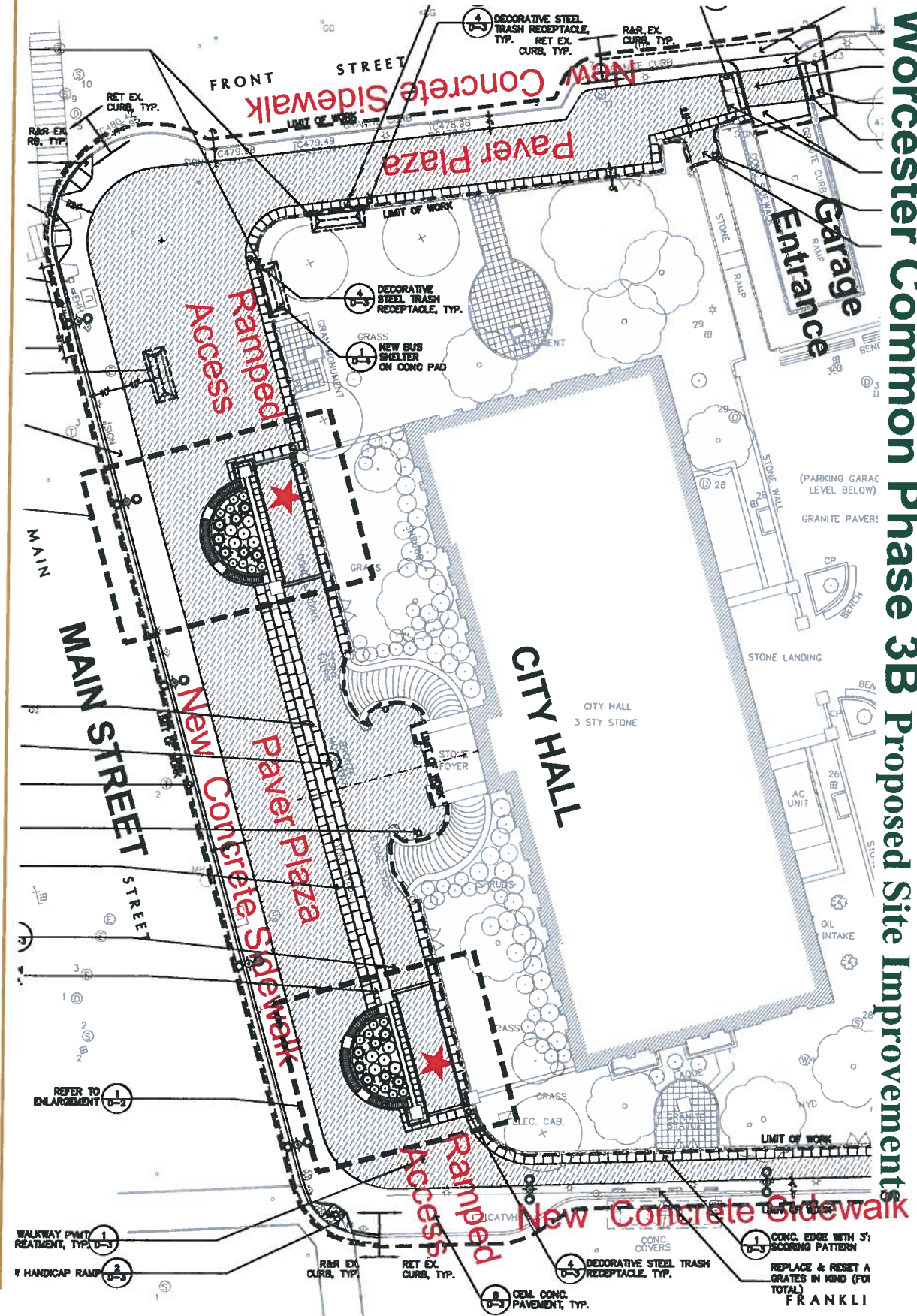
Worcester Common Phase 3B Existing Site Plan



Worcester Common Phase 3B Existing Photos



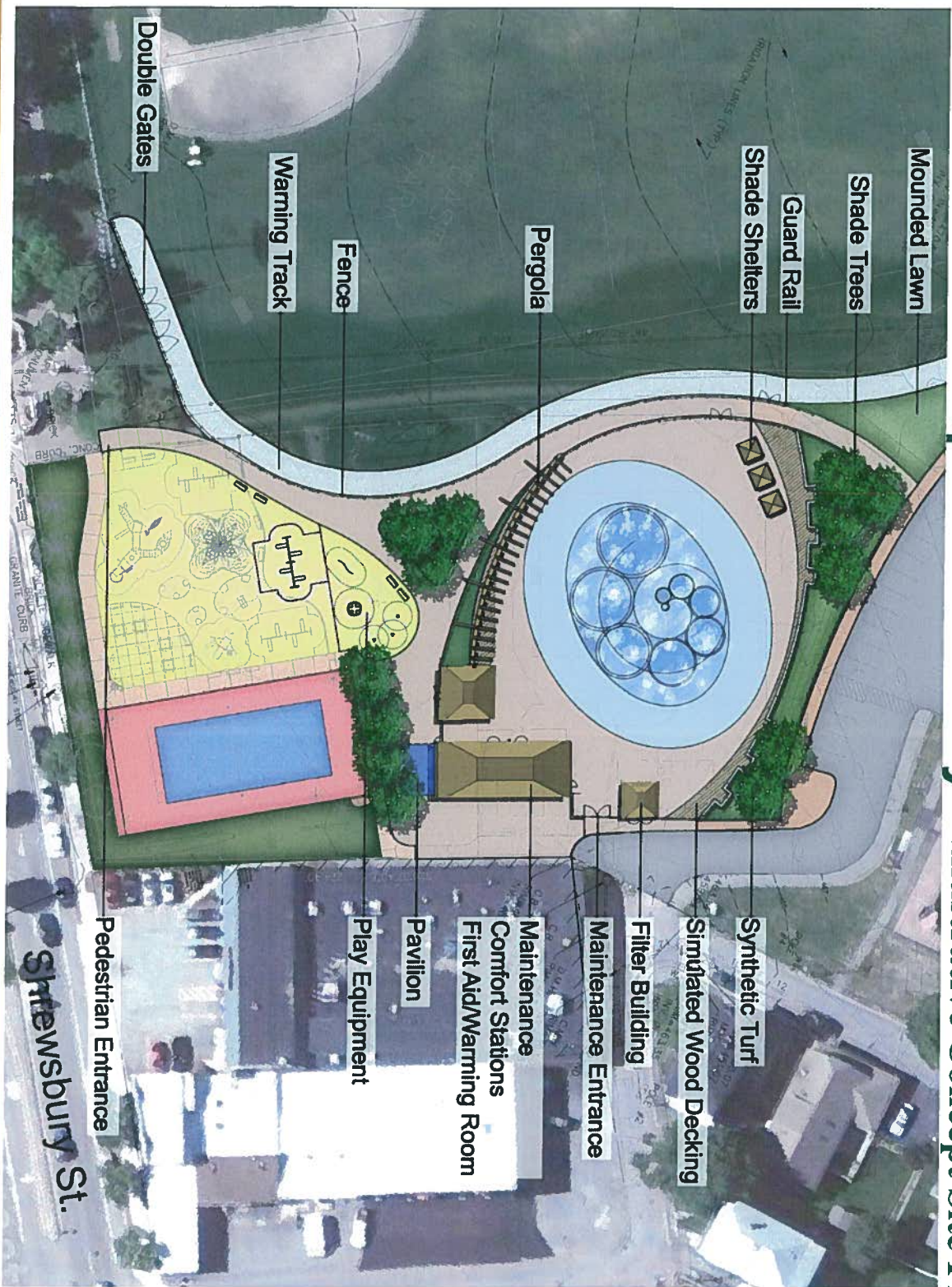
Worcester Common Phase 3B Proposed Site Improvements



Worcester Common Phase 3B Proposed Improvements



East Park New Aquatics Facility - Illustrative Concept Site Plan

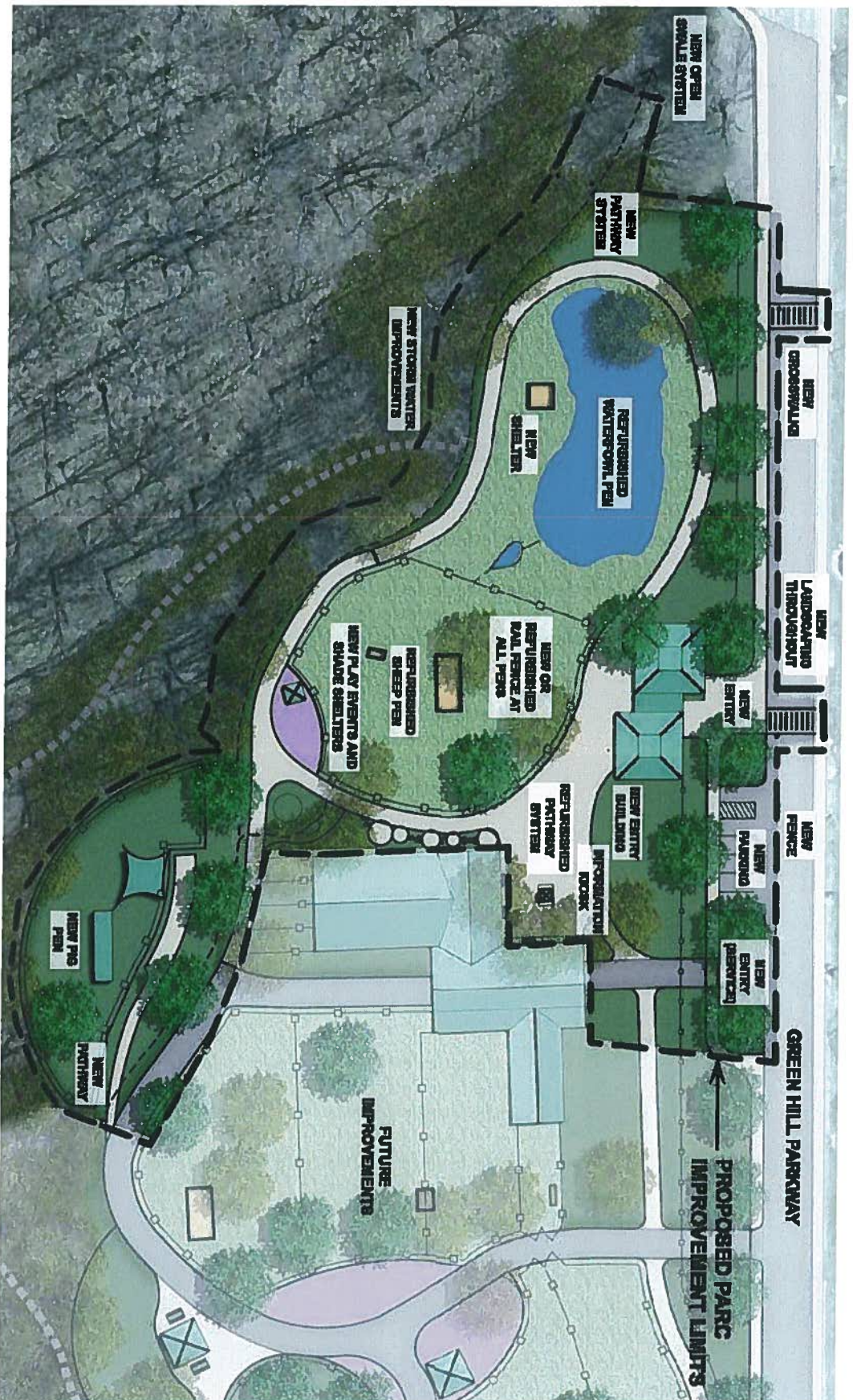


Green Hill Park Farm – Overall Master Plan



Green Hill Park Farm – Phase 1

Illustrative Site Plan



From: Wei Jeng-Chu [<mailto:wjengchu@worcpublib.org>]
Sent: Friday, November 30, 2012 01:04 AM
To: Turchek, Jayna
Cc: jengchuw
Subject: FW: HP on Library Lane

Jayna,

Here is the response that I received from Joe B. regarding the Library's handicapped parking issue (see email below). Could you please forward the following email to Ms. Deborah Malone and other members of the Commission on Disabilities? I will keep you posted when the project is done.

Thanks,
Wei

Wei Jeng-Chu
Head Librarian
Worcester Public Library
3 Salem Square
Worcester, MA 01608
508-799-1726
wjengchu@worcpublib.org

ALA Councilor-At-Large

-----Original Message-----

From: Borbone, Joseph F.

Sent: Mon 11/26/2012 10:02 AM

To: Jeng-Chu, Wei

Subject: HP on Library Lane, & AOA

Ms. Jeng-Chu

...

Second: I'm sorry it took so long to reply to your request regarding the HP spaces on Library Lane. You are correct; there should be two HP spaces posted on that roadway. We have the ordinances but we're not sure why the signs were not posted. We have issued a work order to the Street Dept. to change the signs. I hope they can get this project done this month.

...

If you have any questions please contact me anytime.

Joe

Joseph F. Borbone

Director of Engineering

Worcester's Public Works & Parks Dept.

508-929-1300 x4150

Chairperson
Rachel Shannon Brown

Vice-Chair
Deborah Malone

Secretary
Lynne Towler



**City of Worcester
Commission on Disability**

Members:
Herbert Cremer
Charles Hiamah
Pauline Piso
Stephen Stolberg

Associate Members:
Javier Pena

MEETING AGENDA

Tuesday December 18, 2012
4:15 PM

City Hall, Levi Lincoln Chamber, 3rd floor

- 1. Call to Order, Welcome and Introductions** 4:15-4:20
- 2. Public Comment Period** 4:20-4:35
- 3. Approval of November 20, 2012 Minutes** 4:35-4:45
- 4. Department of Parks- Master Plan Review** 4:45-6:20
 - a. Logan Field
 - b. Greenwood Park
 - c. Knights of Columbus
 - d. Duffy Playground



CITY OF WORCESTER COMMISSION ON DISABILITY
c/o JAYNA TURCHEK, ESQ., DIRECTOR
OFFICE OF HUMAN RIGHTS & DISABILITIES, CITY HALL
455 MAIN ST., WORCESTER, MA 01608
TELEPHONE (508) 799-1152 | FAX (508) 799-1208
EMAIL: disabilities@worcesterma.gov



- e. Coes Knife
- f. Worcester Common
- g. East Park
- h. Barnyard Zoo

- 5. January Parks Open Space Public Meeting** 6:20-6:30
- 6. Library update** 6:30-6:35
- 7. Announcements and Adjournment** 6:35-6:45
- 8. Items for Future Discussion:**
 - a. Service/Companion Animal Ordinance
 - b. Emergency Preparedness and Emergency Management
 - c. Library Accessibility
 - d. Friends of the Commission
 - e. Transportation and TPAG
 - f. Bullying Project
 - g. Executive and Advisory Commissions
 - h. John Street Church